

# The Painswick Beacon

Vol. 23 No. 4

July 2000

## Guild shows its new home

The Gloucestershire Guild of Craftsmen revealed their new permanent home at the Painswick Centre when they opened their doors to members of the public on the evening of 26th May. As well as local residents, MP David Drew was in attendance, along with the Guild's President Stephen Wright. Several members of the Guild gave demonstrations or displayed examples of their work. Visitors were impressed by their superbly decorated premises, and also by the delightfully refurbished Cotswold Room upstairs, which may be booked for local functions.

*Left to right in our picture are: Jan Bunyon (potter), Penny Smith (Guild Coordinator), Toff Milway (potter), Lucille Moore (jeweller) and Stephen Wright (Guild President)*



## Revised housing allocations for draft Local Plan

Another key stage in the progress of the Stroud Local Plan occurs this month, when a meeting of the District Council on 17th July will consider changes to housing allocations in the draft Plan following its period "on deposit" for public comment since last November.

Council officers have drawn up a revised list of allocations for the period up to 2011, taking account of objections made over the past few months. The main changes proposed are in response to criticisms that the distribution of housing did not accord with the County Structure Plan

in that there was insufficient development in the Stroud and Stonehouse area. The proposed Painswick allocation is unchanged - twenty dwellings at Gyde House plus ten units of affordable housing at the Stroud Road 'Care Village' site (the Nursing Home itself does not count towards the overall allocation) - but local interest has been heightened by the fact that Callowell Farm, overlooking the Painswick Valley, is once again identified for large-scale development. In one of three options listed by planning officers there are 240 dwellings at Callowell Farm.

There is also interest in the fact that a major development at Hunt's Grove, Hardwicke, comprising 1,500 new dwellings, is still in the draft Local Plan despite allegations that it is not accordance with the County Structure Plan. This could give rise to problems at a later stage, which is why local groups and residents are still keeping a close watch on the possibility of housing numbers being bumped up in this area.

After the meeting on 17th July a "Revised Deposit Version" of the Plan will be published and comments will be invited on the proposed changes over a six week period, probably commencing in September.

## OFFICERS' REPORT ON CARE VILLAGE

The outline planning application for a 'Care Village' on land north of Cotswold Mead was considered by the District Council's Planning Committee on 13th June, but a decision was held over, pending a sites panel visit, to the July meeting. The site visit was made on 20th June.

A Planning Officers' report prepared for the Planning Committee recommends that they resolve "not to refuse" the application, subject to a number of conditions, twenty-two in all. One of the key conditions is that the development shall comprise a nursing home of not more than two storeys in height plus ten affordable housing units. Officers also recommend that because of concerns about land subsidence the developer should commission a "slope stability report" prior to the application being permitted, and that the development should be restricted to a particular area of the field with steps being taken to ensure the long-term retention of the remaining area as an open space. A resumé of the sites inspection will be added to the officers' report. This states that the sites

*CONTINUED ON PAGE 3*

## Bernard Jones to retire

After seventeen years as Head Teacher of the Croft Primary School Painswick, Bernard Jones has announced that he is taking early retirement at the end of August. This means that he will be saying goodbye to staff, pupils and parents when the school term ends this month.

Please see the Croft School News on page 8 for more details and tributes.

## Council Meeting on 21st June

Reported by Alan Bamber

### Mobile Phones

In view of fears that the area could be "overrun" with mobile phone companies' communication masts, the Council set up a working party to try to establish some guidelines to use when planning applications are received.

### Bus Shelter

A letter from the District Council responded favourably to the Parish Council's proposal that a bus shelter be placed at the Cheltenham Road bus stop (near Lower Washwell Lane) rather than in Gloucester Road. The cost will be met by the Gyde House developer as one of the conditions for approving their planning application for the conversion of Gyde House. The Parish Council was asked to submit a planning application for the shelter.

### Painswick Centre

Reporting on the Painswick Centre, John Stephenson-Oliver said that as a result of measures undertaken by the Management Committee the books now balanced and funds had stopped haemorrhaging. Fund-raising activities were planned but further improvements to the building were needed in order to stimulate more bookings and hence attract more income. Asked about the debts left behind by the Painswick Club, Mr Stephenson-Oliver said that the brewery had collected their equipment and were believed to have written off the debt owing to them.

### Travellers

Terry Parker said that in view of the Parish Council's concern (reported last month) at Painswick Manorship's intention of blocking off parking places on the Beacon to prevent travellers encamping there, Amaury Blow (Painswick Manorship) had proposed that if the Council wished to keep the parking areas open they should take over responsibility for removing the travellers who park there. Councillors

thought such a step might involve legal complexities and it was agreed to seek advice about it.

Mr Parker read out sections from the Criminal Justice and Public Order Act (1994) which indicated that the police do have powers to remove travellers. He thought the recent reluctance of the police to take action was due to guidance by the Home Office to take a "softer approach" rather than to lack of powers.

A meeting with Painswick Manorship was scheduled for 28th June.

### Children's Play Area

Malcolm Watts recommended that the Council upgrade the children's play equipment on the recreation field, in the light of a letter from the District Council offering £1 for every £1 that local councils contribute to improving play areas. Mr Watts thought it was too good an opportunity to miss, and he suggested that £4000 of the balance of the Damsells Bequest (£5,600) be allocated to this, allowing £8000 to be spent on new facilities and other improvements. He described some criteria for choosing and siting the new equipment and identified possible items that the council might purchase. Councillors enthusiastically agreed to his proposal and decided to form a small working party to move the idea forward.

### Hollyhock Lane

Terry Parker said he had contacted the County Council to ask why there had been a long delay in their declaring Hollyhock Lane an official public right of way on the definitive footpath map, and they had promised to speed up the process which was expected to be a formality. However, this would still leave unresolved the longstanding question of legal ownership of the Lane. He added that the obvious way of improving the surface was to put down tarmac but this might be slippery for elderly residents to walk on in winter. It was agreed that the Council Chairman and Vice Chairman should meet with the Chairman of the Council's Parish Maintenance Committee (Martin Slinger) to frame proposals for Hollyhock Lane and put them to the next meeting.

### Recreation Field parking

There had been a request that parking be allowed on the recreation field on 15th July because spaces at the Painswick Centre will be needed for a wedding function. A bowls match will add to the strains on parking in that area. Advocating this, Keith Hardwidge reminded the Council that the terms of the recreation field trust allow it to be used for parking on up to seven days a year. Other councillors were unhappy with the proposal and were concerned at the precedent that would be set.

Jennifer Crook asked what would happen if the Painswick Centre really took off as a regular venue for such functions, to which John Stephenson-Oliver responded that it would be a nice problem to have. After further exchanges it was remembered that the decision had to be made by Councillors in their capacity as Trustees of the field rather than by the Council itself, so it was agreed to go into a private meeting of the Trust at the end of the Council meeting. The Beacon has been informed that the Trust voted against allowing use of the field for parking on 15th July, with two members, Keith Hardwidge and John Stephenson-Oliver, voting in favour.

### Bisley Street restrictions

Two residents had written complaining about proposals to extend parking restrictions in Bisley Street and elsewhere in the village. They said it would make parking more difficult for local residents and would only push the problems elsewhere. One of the letters argued for free residents' parking permits at Stamages Lane car park. Councillor Ann Daniels maintained that when people move into the centre of the village they do so in full knowledge of the limited parking space and they should accept the situation.

### Gyde Trust

The Council's representative on the Gyde Charity, David Hudson, reaffirmed that a new scheme has been drawn up to administer the funds of the Trust arising from the sale of Gyde House. Ann Daniels commented that a lot of money was involved and she'd like to know how the trustees intended to use it.

### Firework Displays

Terry Parker commented on some recent firework displays put on "at night" by residents in and around Painswick. He thought they were antisocial. The parish clerk said he had contacted the noise abatement officer, but little could be done about short one-off events of this kind. Ann Daniels said that such displays in a rural area were frightening to farm animals and she asked that forewarning be given of any further events of this kind.

See also separate item on public toilets.

## Cornerstones Chauffeur Service

Available 24 hours a day for  
airports, theatres, London,  
Licensed Mercedes or well  
turned-out cars

Tel: 01452 770337 Fax: 770987  
Mobile: 07802 154968

## PAINSWICK PAPERS

Have your  
newspapers  
magazines  
and comics  
delivered to your door



TEL. 814265

## Officers' report on Care Village

Continued from page 1

panel was divided on the application.

It is apparent that the officers' recommendation for a nursing home plus affordable housing does not square with the application, which specifies "associated dwellings" as well as the nursing home itself. This was the subject of much discussion at last month's Parish Council meeting, and Keith Hardwidge, the council's representative on the sites panel, expressed concern about the difference between the report and "what the Parish Council has signed up to". Other councillors pointed out that the recommendation is in line with the draft Local Plan. It was also noted that if the proposed conditions are accepted by the Planning Committee and the applicant appeals against the decision, there will be a further opportunity for the Parish Council and residents to comment.

At last month's Parish Council meeting Chairman Terry Parker read out two further letters on the subject from residents, one in favour and one opposing the application.

## New seat



*The new bench seat on the recreation field, donated in memory of Jonathan Sutton. It is located on the Lower Washwell side of the field.*

**PRICE *PD* DAVIS**

Chartered Accountants & Registered Auditors

**We offer a fast response and a personal service for all your taxation and accountancy problems**

Contact Howard Davis on:

Painswick 812491

Mobile phone 0836 515701

Email sales@pricedavis.co.uk



## What future for public toilets?

Two representatives of Stroud District Council - Councillor D Booth and Technical Contracts Officer Lisa Samak - put themselves in the firing line when they accepted an invitation to attend a meeting of Painswick Parish Council on 21st June to explain their Council's decision to withdraw support for the St Mary's Street public toilets.

Councillor Booth said a new policy was adopted after surveys showed there to be widespread dissatisfaction with toilet facilities in the District. Fewer than 50% of people were satisfied with them, compared with much greater satisfaction for services such as refuse collection. He said that public toilets are often outdated and prone to vandalism, whereas most supermarkets and major shops now provide good facilities which are more easily supervised. The Council had therefore decided that it was best to provide a smaller number of high-quality facilities, limiting the number of public toilets to one in each main centre of population, with the exception of Stroud. In Painswick's case this means continuing to maintain the Stamages Lane toilets but not the ones in St Mary's Street.

Parish Council Chairman Terry Parker reaffirmed that the St Mary's Street toilets are owned by the Parish Council, and the visitors acknowledged that, contrary to the impressions they had given, they did not seek to close toilets that are not owned by the District Council. They confirmed that it was acceptable for Painswick to go it alone and meet the full cost of maintaining the toilets. This cost was stated to be £2,200 per year, covering electricity, water and cleaning. If the Parish Council wishes to go down this route it will need to budget for the maintenance as from the next financial year,

though Councillor Booth said that they would honour an existing cleaning contract which runs until September 2001.

Despite these assurances, parish councillors were far from happy. Keith Hardwidge pointed out that Painswick can hardly be called a large town with toilets in supermarkets. Malcolm Watts criticised the "faulty logic" of the decision, saying it was based on a survey that asked the wrong questions. A degree of dissatisfaction with the facilities didn't mean that people wanted them removed altogether. John Stephenson-Oliver added that Painswick needed both toilets - this was why the District Council had agreed to build the Stamages Lane conveniences. They had been put there primarily as a service to visitors, being some distance from the centre of the village. Jennifer Crook asked for an assurance that if the Parish Council maintains St Mary's Street toilets the District Council won't respond by closing the ones in Stamages Lane car park. Councillor Booth said it was impossible to say "never" but there was no likelihood of this under the present policy. The policy will be reviewed in 2003.

The Parish Council now has to decide whether to budget in future years for maintenance of the St Mary's Street toilets.

Garages and All Building Maintenance  
Natural Stonework a Speciality



Extensions

**HORNE & KILMISTER**

General Builders

For Free Estimates phone  
Painswick 812760  
and 01453-872329

## Millennium project

In 1996 Painswick Parish Council decided to replace the wrought iron round table on the Beacon near Catbrain Quarry. The Council allocated £400 towards a replacement, which it made one of its new millennium projects. The round table is beyond repair. If anyone would like to make a contribution towards the cost of the replacement it would be greatly appreciated.

Ann Daniels writes to say that she believes there will be residents who will wish to be part of this millennium project, the purpose of which is to replace the existing table top with one made of oak. The cost is estimated at approximately £1,600. Contributions should be sent to Peter Grant, The Clerk to the Parish Council, Town Hall, Painswick.

**PAINSWICK  
POST OFFICE**

• **NEW SERVICE** -  
PERSONAL  
BANKING  
SERVICES NOW  
AVAILABLE FOR  
BARCLAYS BANK  
AND CAHOOT CUSTOMERS



• PERSONAL BANKING SERVICES  
ALSO AVAILABLE FOR LLOYDS/  
TSB, ALLIANCE & LEICESTER,  
CO-OPERATIVE BANK AND  
SMILE CUSTOMERS

• GOING ON HOLIDAY? CHECK OUR  
RATES FOR FOREIGN CURRENCY  
AND TRAVEL INSURANCE. WE  
ARE VERY COMPETITIVE.

PAINSWICK POST OFFICE tel. 812303

# Fine cricket performances

After the wet start to the season, the weather has been much kinder and a number of matches have been played. Last Saturday (24th June), Painswick First Eleven entertained Ryeworth in a league match and, after a shaky first few overs in which they lost three batsmen for just four runs, they settled down to post a challenging score. The hero of the day was Ian Hogg who hit a fine century. Ian and Steve Holford put on 48 for the 4th wicket but with five wickets down they had still only scored 62 runs. John Barnard then joined Ian at the crease and they mounted a match winning partnership of 171. The innings closed on 186 when Simon Base was bowled in the penultimate over of the 45 overs game. Ryeworth's innings never posed a threat to the Painswick total and they were all out for 74 runs with Peter Cash taking 4 wickets for 14 runs.

Earlier in the month Painswick were hosts to old rivals Cranham in a Sunday friendly match. Painswick were determined to produce a better performance than that at Cranham last year when they had fielded a weakened side and the home team had a convincing victory. This year the position was reversed with Painswick able to select a comparatively strong team and Cranham having several players unavailable. A notable absentee was the injured Alan Kempster, Cranham's free-scoring opening batsman who has been a thorn in Painswick's side over a number of seasons. Painswick batted first on a good wicket and at the conclusion of their

40 overs had scored 155 for the loss of 7 wickets. For Cranham, "Buzz" Pockett bowled very economically to take 3 wickets for 21 runs in his 10 overs. Ian Hogg was not out with 31 runs at the end of the Painswick innings. Cranham were unable to mount a serious challenge to the home side's score and were dismissed for 56 runs. The outstanding Painswick bowler was Mike Hodgeson who returned the excellent figures of 6 wickets for 6 runs. Those watching the game were very impressed with Hodgeson's line and length which hardly varied as he moved the ball off the seam with his right-arm medium-fast deliveries.

**Results**

(All Saturday matches are league games)  
 Sat 3 June. Ruardean 1st XI 191 Painswick 1st XI 110 (R Hopkins 52).

Sun 4 June. Painswick 155-7 Cranham 56 (M Hodgeson 6-6).

Sat 10 June. Painswick 1st XI 199-7 (D Emery 88, I Hogg 42) Oldlands 1st XI 158 (O Earl 4-25). Painswick 2nd XI 150-6 (C Loveridge 82) Upton St Leonards 2nd XI 144.

Sat 17 June. Painswick 1st XI 159 Hatherley & Reddings 162-2. Painswick 2nd XI 192 Upton St Leonards 2nd XI 194-8.

Tue 20 June. Essex Ploughboys 186-4 Painswick 189-8 (D Emery 38, J Cook 35).

Sat 24 June. Painswick 1st XI 186 (I Hogg 100) Ryeworth 1st XI 74. Westbury on Severn 2nd XI 158 Painswick 2nd XI 131.

Sun 25th June. Ampney Crucis 225-2 Painswick 182 all out. (A Wise 65)



*Ian Hogg who scored a fine century last month*

## Painswick Bowling Club news

The men have entered the Cotswold League this year for the first time and are enjoying a good start with maximum points from their first two matches. The Club has entertained friendly touring teams from Devon, North Yorkshire and Norfolk with both sides enjoying the more social side of the game (i.e. we came second in some matches!).

The afternoons for youngsters to experience the game will start on Monday 17th July at 2.30pm. We already have two young lads from the village who have had instruction and will develop into very good bowlers, hopefully playing in the team this season. Bowls can be played by boys and girls, so during the holiday from school or college you will be welcome to come along - just bring flat bottomed shoes or trainers. Bring Mum and Dad too if you like.

Victorian Market Day will soon be upon us, and the Painswick Bowling Club will again be throwing its doors open for the public to meet Club members and try their hand at the sport. To help with the social aspect we will be serving light teas and drinks on the balcony, and have various sales stalls as well as fun bowling events. Further information can be obtained from the Men's Captain John Holmes on 812755 or the Ladies Captain Edna Crawford on 01452-525673.



*Lucy Moir (left), winner of the Robinson's Under-10s Tennis Tournament, with runner-up Georgina Jeffreys from Cirencester (report on page 5)*



**ST. VINCENT'S  
NURSING AGENCY**

26 Vincent Avenue,  
Tuffley  
Gloucester. GL4 0SW

**PROVIDING A QUALITY  
HOME CARE SERVICE  
WITHIN THE  
GLOUCESTER DISTRICT  
AREA**

Providers of:- Personal Care  
 - Domestic Help  
 - Shopping  
 - etc

**TEL. (01452) 415066**

**OAKLEY  
GARDEN SERVICES**



*For all your garden needs*

**MOBILE: 07979 590818**  
**TEL: (01452) 814533**

## Tennis in full swing

Despite some very wet weather plenty of tennis has been available even if some of the Club sessions have been poorly attended so far.

An American Tournament was held on Saturday 10th June; the winning man was Danny Luke and the winning lady Claire Hooper. That evening the Club held a skittles BBQ at the Rugby Club and with the weather more like autumn the skittles proved very popular. Six teams of eight competed, with Debbie Westgate's team the eventual winner.

The Men's team are having a tough season in the Gloucestershire League, with the B, C and D teams all destined for demotion following all the hard work last year in gaining promotion. The A team, however, has not lost any matches yet with three wins and two draws.

The big success this year has been the Juniors with coaching on Wednesday and Thursday afternoons and also Saturday mornings. In addition there is good support for the Thursday evening sessions for the older juniors which lead into the adult club session. There are various tournaments planned for juniors in July with notices up in the club house. The two junior teams have had some good performances. The older boys have won three and lost two, and the younger boys have two wins and two losses so far.

The Robinson Tournament, open to any under-10 boys and girls in Gloucestershire, was held during half term and was well supported, with Lucy Moir of Painswick the winning girl and Tom Duckmanton the winning boy.

Looking to the future, there will be the usual August tournament for adults held on Wednesday and Friday evenings on a handicap basis.

### HOME 'n' DRY

#### 'DRY CLEANS CARPETS'

**ABSOLUTELY NO DRYING TIME! - Guaranteed**

- Deep Clean and remove soil & spots
- Lift and rejuvenate carpet pile
- Leave your carpets with a clean fresh scent
- Benefit Asthma & Dust Allergy sufferers
- Leave your rooms ready for immediate use

**New 'DRY' Foam Upholstery Cleaning**

For a free, no obligation quotation call **01452 612229 or 0370 437777**

## VICTORIAN MARKET DAY

Don't forget - next Saturday, 8th July, is Victorian Market Day! The streets will be full of colourful market stalls and entertainments for all. There will be shire horses, steam engines and organ, street entertainers, a pig roast, goat carts, Gloucestershire craft stalls, a band and a grand raffle.

And for the first time there will be a Punch and Judy Show, fortune telling, sculptures done with a chain saw, dancing by the Croft School, and a fancy dress competition for children with a Victorian theme (see local posters for details).

The grand opening will be by Queen Victoria and Mr John Brown at 11am outside the Town Hall.

Footnote: The Victorian Market Day Committee is sure residents will understand that in order to attract visitors a huge amount of money is spent on the above attractions. This is largely paid for by the stall holders who pay for their table and site in the streets and halls. It would be much appreciated, therefore, if those residents wishing to have private stalls outside their houses or shops would contribute towards the committee expenses.

## PLANNING APPLICATIONS

### Applications

- Valpre, Vicarage Street. Insertion of dormer windows to front elevation.
- Hammonds Farm, Wick Street. Extension to agricultural building.
- Shutway Quarry, Sheepscombe. Retrospective application for erection of one dwelling.
- Field Croft, Sheepscombe. Erection of single-storey extension.
- Beech Farm, Sheepscombe. Extension to existing agricultural building to form covered yard and feed area.
- The Lamp House, Victoria Street. Erection of entrance gate and railing.
- Cotswold Villa, Gloucester Street. Replace railings to front of property.
- Grays, Far End, Sheepscombe. Erection of garden store.
- Pyl House Farm, Jack's Green. Change of use of building for stabling of two ponies and storage of animal bedding and supplementary feed.

### Revised Plans

- Plot 3, Paul Camp, Back Edge Lane, Edge. Erection of one 4-bedroomed house. Main changes: alterations to position and design.
- Bayliss Cottage, Sheepscombe. Erection of swimming pool and changing rooms. Main changes: additional elevation drawings.
- Chestnut Cottage, The Park, Conservatory.
- Painswick Squash Club, Yokehouse Lane. Erection of 5 garages in connection with planning permission 99/1237. Application amended to include garden areas.

### Consent

- Gyde Barn, Cheltenham Road. Retention of entrance gates.
- Painswick House. Internal alterations: restoration of 2 laylights in roof, reinstatement of driveway and erection of fencing and gates.

### Consent, continued

- Painswick House. Change of use of Old Brew House to craft workshop for antique furniture restoration.
- Village Hall, Sheepscombe. Erection of rear extension and alterations (existing lean-to to be demolished).
- Lyndhurst, Blakewell Mead. Erection of 2-storey rear extension.
- Briarfield, Stroud Road. Alterations and extensions to dwelling.
- The Anchorage, Cheltenham Road. Erection of extension.
- 1 Hyett Close. Erection of extension and alterations to dwelling.
- Falkland House, Gloucester St. Part-demolition of sun room and alterations to form new kitchen/breakfast room & swimming pool.

### Refusal

- Cotswold Villa, Gloucester Street. Removal of retaining wall and waste soil to create off-road parking. Demolition of outhouse. Replace iron railings to front of property.

### Plan Withdrawn

- 28 Upper Washwell. Erection of 2 storey side extension.

## THE PAINSWICK HOTEL

KEMPS LANE, PAINSWICK  
GLOUCESTERSHIRE GL6 6YB  
TEL: (01452) 812160  
FAX: (01452) 814059

### "The Cotswolds Best Kept Secret"

A light lunch on the Terrace. A quiet dinner with friends. A family party. Prepared by our Award Winning Team of Chefs

#### Superb Luncheon

Served Daily 12.30 - 2.00pm  
2 courses £13.00, 3 Courses £16.00  
Traditional 3 Course Sunday Luncheon  
£17.50

#### Dinner Menu

2 courses £23.00, 3 Courses £26.00  
The best of Cotswold meat, game, Severn salmon and Vale of Evesham vegetables

Or simply relax on the terrace and enjoy the peace and beauty of the Hotel and Gardens with our

**Delicious Afternoon Tea Menu**

### CENTRELINE



STONEMASONS & TRADITIONAL  
BUILDING REPAIRS

TEL: 01452 813892

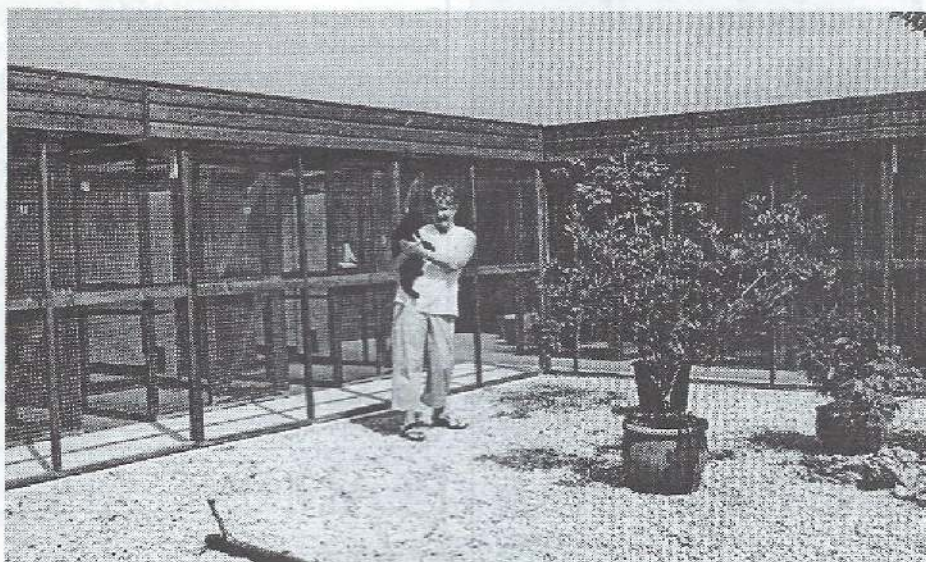
FAIRFAX HOUSE VICARAGE STREET PAINSWICK

## Boarding cattery opens in Wick Street

Last month saw the opening of an interesting new business venture in Wick Street - the Bastet Boarding Cattery. It is located at Forty Acres, near Hawkwood College, and is run by Janet Horner, a newcomer to the area.

The venture represents a change of career for Janet, and one that fulfils a longstanding ambition. Although this is the first time she has run her own cattery, she is highly experienced at looking after cats, having worked with the Cats Protection League and fostered several rescue cats, in some cases bottle feeding them. She also has a certificate in Cattery Management as a result of an intensive training course with the Feline Advisory Bureau.

The cattery consists of twelve separate chalets, comprising ten standard units that can each take one or two cats, plus



two 'family units' taking up to four cats. There is also an isolation unit for use in case of sickness, set well apart from the other chalets. The chalets are superbly constructed and equipped, each with spacious living and sleeping compartments, and individually heated. There is a secure

connecting walkway running alongside the chalets, though the chalets themselves are kept well apart from one another to minimise any risk of cross infection.

Our photo above shows Janet holding one of her own three pets - a rescue cat called Harry.

## New chiropodist clinic at the Surgery

Residents may be interested to learn that a private chiropody clinic has recently opened at the Gyde Road surgery. Geoffrey Boldero MSSCh MBChA, who has been in practice for four years, will be offering professional footcare for the people of Painswick and surrounding district.

Geoffrey says: "Our feet are probably the most neglected part of our bodies even though we average 18,000 steps per day on hard unnatural ground. The benefits of footcare are usually overlooked. When the feet are in optimum working order the joints of the lower limbs work more effi-

ciently and without discomfort. However, all too often painful conditions such as corns and ingrowing nails can cause a person's gait to alter in a conscious or unconscious attempt to avoid the 'hot spots'. This has a detrimental effect on the body's balance and posture as compensation is always destructive."

Appointments can be made for the chiropody clinic by ringing the surgery.

## Directory changes

Several new enterprises have recently started up in the area, and readers may wish to make a note of them on their copies of the Annual Directory published by the Beacon.

**Accommodation** - Guest Accommodation: Madison House (Country Elephant), New Street. 813233. 1 twin, 1 double, both en-suite. B&B, dinners, picnic lunches, baby sitting service, children welcome, accept pets.

**Businesses and Shops:** Bastet Cattery, Forty Acres, Wick Street, 01453 752006. (See separate item on this page)

**Funeral Directors:** Philip Ford and Son (David Archard), 812103.

**Gardening:** Stuart Colley, 814379, mobile 07932 972675. landscaping, patios, fencing, trees, general maintenance.

**Medical and Health Services:** Chiropodist, Geoffrey Boldero, Painswick Surgery, 812545. (see separate item on this page)

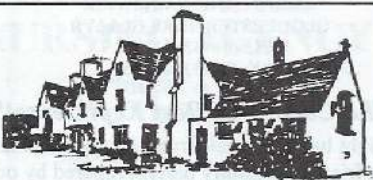
## Shop closes

There is regret at last month's closing of John Saunders' fruit and vegetable shop in Friday Street, which ends a family run business that has been in that corner of Painswick for nearly thirty years.

Jim Saunders took over the butchers shop in Friday Street in 1972, soon extending it to include a vegetable section. In the 90s his son John took over from him and in 1994, some months after Jim's death, the vegetable and butcher's sections were separated with John running the vegetable and flower shop and Allen Hale taking over the butchers.

## Statement by David Archard

David Archard wishes it to be known that in future he will be arranging and conducting funerals in association with Messrs Philip Ford & Son Ltd of Stroud, an independent family business of long standing.



## RESTHAVEN

Resthaven, Pitchcombe, Nr Stroud,  
Gloucestershire GL6 6LS.  
Telephone: Painswick (01452) 812682

RESIDENTIAL/NURSING HOME  
SHORT & LONG TERM &  
RESPIRE CARE  
SINGLE ROOMS  
PRIVATE CHAPEL  
BEAUTIFUL SETTING OVERLOOKING  
THE PAINSWICK VALLEY

Resthaven Home of Healing Ltd  
Regd. Charity No. 235354

**P FOSTER**  
GENERAL BUILDER / CARPENTER

STONEMWORK and REPAIRS  
FENCING  
BALCONIES  
SMALL JOBS WELCOME

Enquiries 01453 759106

## LETTERS TO THE EDITOR

Please could people show a bit more consideration when driving up and down Lower Washwell Lane. In places it is quite narrow with some nasty bends. Some of the driving is too fast and larger cars take up nearly all the road. Some of the driving is quite dangerous. Take heed, less speed. Thank you.

Angela Critchley,  
Lower Washwell Lane

In the June Painswick Beacon Police Report they are telling people to lock up your doors, close your windows, especially in sunny weather, and they go on to say 'Together we will crack crime'. They have been saying this for years and yet crime gets no less. I would suggest that this is a fallacy. It does not depend on the police

or public; if they catch the thieves and they are taken to court, they come away with a slap on the wrist or let off and are told not to do it again. Until judges and magistrates start giving these sorts the punishment they deserve crime will never be cracked. So I suggest the police aim their blows at the courts to give proper sentences to fit the crime.

Don Tinsey, Woodlands Farm,  
Cranham

The Beacon welcomes letters from readers on subjects of local interest. Short letters are more likely to be included. Long letters will be summarised or edited, as will those containing comments that the Beacon considers unsuitable for publication.

## David Skelding

I and many friends from Painswick travelled to Christ Church, Ross-on-Wye, on 23rd June to a funeral service to give thanks for the life of David George Skelding, a former Painswick resident, who recently died, aged 49.

The Minister, Revd David Featonby, spoke of David's friendship and help during the last months of his life. David Archard, representing his many friends in Painswick, gave a moving appreciation. The service began with a hymn 'Make me a Channel of Your Peace'. David's wife, Sue, gave a tribute to his great love and devotion to her and to his two daughters and 18-year old son, Tom. David's daugh-

ter, Claire, read Rudyard Kipling's poem 'If'.

On the Order of Service was printed a very appropriate passage: 'Some people come into our lives and quickly go, some stay for a while and leave footprints on our hearts and we are never the same again.'

Sue and family express their thanks to all relatives and friends for their messages of sympathy and support. Donations will be given to Christ Church Methodist/URC in Ross-on-Wye, where David found much comfort in the last months of his life.

John Thynne-Russell

## Mencap Service

The annual Mencap Service will be held at Christ Church, Gloucester Street, on Sunday 23rd July, 6.15pm. All are welcome.

## The GARDEN Co

### TREE SURGERY

- ▲ Mature Tree Maintenance
- ▲ Thinning, Pruning & Reducing
- ▲ Tree Removal & Chipping
- ▲ Hedge & Shrub Trimming
- ▲ Tree & Shrub Planting

Trained, Qualified & Highly Motivated Staff  
Free Consultation - Expert Advice - Fully Insured  
All Work Fully Guaranteed

Association of  
Professional  
Landscape  
Contractors

LANDSCAPE HOUSE

CHURCHDOWN, GLOS. GL3 1NX

APL

01452 535165

## 'Inspirations'

Three local artists, Valerie Dugan, Carol Keyes and Ian Shearman, have combined to produce an exhibition of their work that is both original and inspirational.

The exhibition includes fine art, calligraphy, paintings, sculptures and ceramics.

The work, which is for sale, will be on show upstairs in Painswick Town Hall from Sunday 23rd July until Sunday 30th July, from 10am till 5pm each day.

### Michael Davis

Building and Maintenance Contractor

Painswick 01452 812598

Mobile 0589 092279

e-mail: Mike@swtennis19.demon.co.uk

ALL types of building work carried out.  
Natural Stonework and Dry Stone  
Walling a speciality

Lived and worked locally for over 50 years  
Member of the Guild of Master Craftsmen

## Monday morning images

The work of Painswick residents features in an exhibition of photographs - 'Hidden by Hedges' - currently on show in Cheltenham Museum, Clarence Street. The exhibition is a community project in which local groups took black and white photographs of aspects of the Cotswold Way. The Painswick pictures were taken by members of the informal Monday Morning Walkers group - Patrick Daly, Maureen Walters, Harold Wood, Clare Haynes and Richard Harris. The exhibition, which on the second floor of the museum, continues until 18th August.

The Monday morning walkers meet in Stamages car park at 10am and go for walks of about two hours duration.

## Thank you

Trish Moroney would like to thank neighbours and friends for all their kind support and sympathy on the death of her mother Rhoda Moroney.

Nancy Stevens would like to thank the kind friends who visited her in hospital, sent cards and gifts, and for all the kindness she has received during her recent illness and operation.

This is a 'Dear John' letter! I would like to thank John Saunders and staff for the service he has provided for the village, especially the delivery from Ray. The shop will be greatly missed. I wish him and his family all the luck for the future.

Angela Critchley

# MURRAYS

INDEPENDENT ESTATE AGENTS

## RESIDENTIAL SALES PROPERTY AUCTIONS VALUATIONS & SURVEYS

Offices also at

### STROUD MINCHINHAMPTON MAYFAIR

Victoria Street  
**PAINSWICK**  
01452 814655



# CROFT SCHOOL NEWS

## Bernard Jones's retirement

When Bernard told the staff that he was retiring at the end of this term, my thoughts went back some seventeen years, to when Derek Hodges made a similar announcement. I was surprised and saddened then, because I knew that the Croft School was losing a very good headmaster, and a great friend to staff and parents alike.

When Bernard was appointed, although he had his own style of management, I knew that I would happily stay and work at the Croft under his direction. It became clear that he had a rare gift in people management. He had that ability to listen to problems, and to deal with them in an even handed way. In times of personal crisis Bernard has proved to be a good friend to all. As a Head Teacher, he has encouraged a pleasant working atmosphere, for without a great deal of goodwill we could not put into practice the ever changing National Curriculum.

When I tell Class One that Mr Jones is sharing a lesson with us, all the children are really pleased. Young children are very honest and open in their views, and their pleasure reflects Bernard's approach to children. He genuinely has their welfare at heart, and is interested in their lives and their progress throughout the school and beyond. He often tells people that he sees our school as a big family, with older members helping younger ones and, under his direction, this is true.

As the longest serving staff member, I have been asked to write this contribution. It has been my pleasure to reflect upon seventeen happy years - years which have seen changes in staff, changes in buildings, many changes in the curriculum. Throughout all this, Bernard has been the anchor, steadily holding together the dif-

ferent aspects of school life, enabling people of many different backgrounds, and of differing personalities, to work in harmony at the Croft.

Bernard, in your retirement we wish you well, forget that paperwork and enjoy your family life and your home. Thank you for all you have given us.

Judith Gibbs

\* \* \* \* \*

At the beginning of June Mr Jones announced that he would be retiring at the end of this term. He has been Head Teacher of the Croft School for seventeen years. During that time he has successfully managed huge changes in teaching particularly since the introduction of the National Curriculum. With the new school buildings, the school has developed into a wonderful village facility. Without Mr Jones's guidance this would not have happened. Our children are very lucky to be able to spend such important years of their lives in the happy and safe atmosphere which the Croft offers them.

The children and PTA will be thanking Mr Jones and wishing him a happy retirement following the Leavers' Service on 21st July. Anyone with past or present connections to the Croft School will be welcome at the service at 9.30 in Christ Church followed by coffee in the School Hall at 10.45 until 11.30.

If you would like to make a donation towards a retirement gift for Mr Jones, please leave it at the school reception in an envelope addressed to the Croft School PTA.

Sally Unwin,

Croft School Governor

## Short Tennis

The Croft School short tennis teams have won a place in the County Final of the Gloucestershire schools' short tennis championships. Well done to all those who took part and good luck in the final on 28th June.

## An Action-packed Day

Three events in one action-packed day emphasised the variety of activities with which I am involved in relation to school life.

We had a brilliant day to start our Arts Week at The Croft. We enjoyed the craft workshops and musical stories of Akoma, a locally-based Afro-Caribbean group. They inspired the pupils with their enthusiasm for art, and followed this at the end of the afternoon by an hour-long show of stories and music from Jamaican culture.

After school a team of pupils, well supported by many parents, took part in the Area Sports field events at Stroud. Despite the very hot weather our competitors did their utmost in the throwing and long-jump events, gaining valuable points which will be added to our track events score in early July.

Within an hour I was attending a social evening held by The Beacon Singers.

CONTINUED TOP OF NEXT PAGE



Class 5 pupils show Ropert their designs produced from wood blocks. Each of the blocks carries a traditional cultural symbol from Ghana

**LAWNMOWERS**  
SERVICE • REPAIR • SALES

- HONDA
- MOUNTFIELD
- QUALCAST
- STIHL
- HAYTER
- ATCO
- FLYMO
- WESTWOOD
- KUBOTA
- COUNTAX

**FREE LOCAL COLLECTION & DELIVERY**

CHELTENHAM MOWER SERVICES  
MOBILE: 0831 282533  
TEL: 01452 714098  
www.users.globalnet.co.uk/~cmowers

**PRIVATE HIRE TAXI**

**ALLAN & MARTIN WEAGER**  
(Formerly Rylands)

01453-763947 (Allan)  
01453-764845 (Martin)  
Allan (mobile): 07712-776470  
Martin (mobile): 07808 722255

**G J HOGG**  
PAINTER AND DECORATOR

Interior and Exterior Painting  
Wallpapering, Glazed Tiling

Estimates Free

8 Upper Washwell  
Painswick  
Glos. GL6 6QY

Telephone  
PAINSWICK 812505



## CROFT SCHOOL NEWS

With regret they had decided to disband the group after forty-eight years, but had a sum of money to donate to local causes. Along with the Milestone School, Gloucester, we were presented with a cheque to spend on musically-related items. I am pleased to report that this sum of money is large enough for us to purchase some glockenspiels and CDs, which will be a valuable addition to our resources. I am grateful to The Beacon Singers for their kind gesture.

What made the day even more enjoyable was that the experiences and interests of the pupils was a common thread through all the activities.

Other events planned for Arts Week include three plays by the Everyman Theatre Group, a one-day book sale, visits to the Celebrating Education display of Arts and Crafts by local schools, which is held in Stroud, painting and model-making, and finally an Open Afternoon for parents on Friday afternoon.

Bernard Jones

### Caribbean Arts

Yesterday, 19th June, a Caribbean Group came to our school. They were called Cultralee and Ropert. Cultralee showed us how to paint stonecasts. Stonecasts are a bit like plaster of Paris but harder. Before you paint on them you have to put on an undercoat of white paint. In the afternoon Cultralee and Ropert told us some of their stories. Their most famous one is called The Caterpillar. Ropert made badges with classes 5 and 3 in the morning. A few people had Jamaican flags on their badges. We also made patterns on fabric with wax crayon, then we went over them in a dye.

Katherine Hyland

### ANDY AYLNER

#### PLUMBING & PROPERTY MAINTENANCE

All work undertaken  
Quotations given  
Local recommendations  
available

GLoucester 416116

### Roland Beggan

Chartered Accountant  
Fast & Efficient Service  
Limited Companies  
Partnerships & Sole Traders  
For all your Accounting, Tax  
and Business Advice  
Telephone 01452 812075

## Christian Aid matters

The final total collected in this year's Christian Aid Week came to £6102, only a few pounds less than in the previous year. CA Shop income was down this year, but the house-to-house collection, both in Painswick and Sheepscombe, was well up, with still more to come from the tax which the Chancellor is returning for the first time this year on donations from UK taxpayers who supplied their names and addresses on the envelopes when they handed them back.

We offer our thanks to all those who gave or worked generously for the success of our efforts again this year. We

expect to be back in 2001, when there will be some improvements to the way we operate.

In the meantime, please note that at the kind invitation of Ted and Elizabeth Burge there will be a Garden Party at Yew Tree House, Vicarage Street, Saturday 29th July, between 3 and 6pm, including a Celebration of Cotswold Poetry by Veda Warwick and Dave Walton, in the Friends Meeting House (two performances). Teas, cake stall, Traidcraft, etc, in a most beautiful garden setting. Dogs on a lead please. Admission is £5.

Peter Minall

## A letter from France

"Ow eezze it that ze English cannot play futtbull?" asked the Frenchman, who had for the last 200 miles tried to mate the front of his Clio with the back of my BMW and join us in the back seat for a chat. "Ow eezze it zat your league az many star team like ManU and Tottenham Otspur and yet when togezzer you play like you av tied your boot laces to ze wrong foots? You av no exkuses az you have verry bon French players and managers in your league, yet you learn nuthing. Eezze it becos your futtbullers ar too interested in what car zey will av next, whetzer zey armani zuit is in style or, if zey av been fortunate to av zee grand moment, naming their off spring after ze venue of luv, zuch az Brooklyn or Wallsall?"

Recognising that I was onto a loser I drew on centuries of "Perfidious Albion" and changed the subject and launched into a detailed description of Painswick, its people, culture, buildings and ambience. He looked a little puzzled but took the hook and began to question me closely about this little gem, which clearly he thought should have been dealt by our Maker to La Belle France.

In response to my answers the Frenchman became exasperated. "Ow eezze it" he said "zat you Briteesh av not put a six lane autoroute thru ze centre of

this fine village, imported dogs to cover ze pavements wiz petit poo poos, allowed signs every ten metres telling of ze benefits of King Charles' pizza and Cromwell chambre and petit dejeuner, and constructed French toilets for zee locals?"

He searched for something he could understand. "Surely, you av zee free press?" I said that we had the Painswick Beacon whose editor was no other than Monsieur Alain 'Scoop' Bamber. He cheered up considerably. "Zen M Bamber

az zee opportunity to observe clozely zee important people in Painswick and reveal to zee ungr readers moments of indiscretions, rumours, peca-dillos, all ze things we French adore," he stated with considerable certainty. "Not really," I said, "the editorial content of the Beacon is decided by a committee."

"Quelle Horreur", he muttered, "but eet must be certainment zat zis committee digs into zeeze important people, politicians, auberge owners, sportsman, eds of light entertainment, and gives zem ell". I point out that all of the important people are on the Committee.

There followed a prolonged silence. He stubbed his galliouse into his coffee cup, stood up, shook my hand and said "I am beginning to zink zat you Briteesh are not az stupeed az you zeem."

Anon, the A7, France

### FROCESTER FAIRE



T.W.Hawkins & Sons  
Church Farm, Frocester,  
Stonehouse, Glos., GL10 3TJ.  
Tel/Fax 01453-822054

#### FARM FOOD AT FAIR PRICES

Our products include: all joints of pork - cut to your requirements, farmhouse pork sausages, home-cured bacon, home-cured gammon joints and steaks, homemade faggots in gravy, homemade assorted pies, real dripping, ½ pigs for freezer. All products are subject to availability, but please do not hesitate to contact us for a full product and price list. All orders over £40 and within 15 miles can be delivered free of charge.

Go on, try some and 'taste the difference'.

### FRANCES FENWICK FLORAL DESIGN

#### WEDDING & FUNCTION SPECIALIST SYMPATHY TRIBUTES

Portfolio of designs to choose from  
Professionally qualified florist  
Please telephone for a consultation:  
Frances Fenwick NDSF FSF

07778 655220

Fax: 01452 812246

Unit 1, Kellavie, Wragg Castle Lane,  
Pitchcombe, Glos. GL6 6LU

# Maths with Shakespeare at the Rococo Garden!

*Maths can be fun!*

This year is Maths Year 2000. Local education authorities and schools are promoting the message that maths does not have to be a boring text book subject but when applied to all sorts of day to day situations can be great fun too.

Working with local schools, under the Stroud and Mid Gloucestershire Business Education Programme, the Rococo Garden is showing this can be the case. The Business Education Programme seeks to create links between schools and local businesses in order to create new learning opportunities for children. In the Rococo Gardens case the Programme managed to secure funding which enabled local teachers to visit the Garden and create a series of numeracy projects for local children to do.

These projects enable schools to visit the Garden and have a series of tasks for the children to undertake. There is the opportunity for follow up work when they return to the classrooms.

The Rococo Garden has only been able to follow this route of attracting schools since the new Orangery was

completed. Schools can visit now safe in the knowledge that if the weather is bad there is at least a room under cover where the children can seek shelter.

So far over 150 local children have visited the Garden in the last few weeks to learn that Maths can be fun.

Paul Moir

## 'As You Like It' at the Rococo Gardens

The Gloucestershire Drama Association is again presenting one of Shakespeare's comedies - perhaps the one most suited to an open air production - from 18th to 22nd July. The play is directed by Christoph Greatorex, who many will remember for his entertaining and imaginative production of 'The Taming of the Shrew' two years ago. Rehearsals, in the Church Rooms, are going well and the cast and back stage crew are looking forward to what they hope will be another successful production, the fourth at the Rococo Gardens. As previously, the picnic areas are open from 6pm and there are covered (and padded!) seats for the performances which commence at 7.30. During the extended interval the audience is invited to walk in the Rococo Garden if they wish. A wine and coffee bar is also available. At the time of going to press there are still some seats for Tuesday and Wednesday. If you would like to book tickets (£9.50) please ring Julie Jenner at the Box Office (01453-844581).

## The Haven

Sometimes people ask me what The Haven most needs at the moment. I am told there is a great need for small, fruitbowl-size eating bowls (china please, not plastic) for the children. Also bibs are always needed and face flannels for wiping dirty faces! Otherwise, supplies of nappies and wipes are always welcome. If there is difficulty with transport I can take them down to The Haven for you if you bring them to 1 Hambutts Mead.

Diana Feilden

# POLICE REPORT

*Incidents: 15.5.00 - 14.6.00*

House Burglaries: Painswick 1, Sheepscombe 1. Business Premises: Painswick 1, Cranham 2. Sheds: Edge 1, Sheepscombe 1. Vehicles: Painswick 8, Cranham 2, Sheepscombe 1. Other: Painswick 3 (damage 2, theft 1), Cranham 1 (theft), Edge 1 (theft).

### Items stolen:

From vehicles: Handbag and contents, mobile phone, laptop computer, golf clubs.

From other areas: Golf clubs, power tools, cash, handbag and contents, sit-on mower, pedal cycle, Cotswold stone tiles, chimney pots, complete bathroom furniture sets (2).

### Reported Incidents:

Fifteen incidents were reported of which six were of value to the Police. Thank you.

### Security Improvement Recommendations:

Recently there have been two cases of walk-in thefts when elderly persons have been distracted by a young male posing as a water official. We remind everyone to be on their guard when dealing with unexpected callers and to make sure that you know who you are letting into your home and garden. Always ask for identity documents which will always be carried by bona fide personnel.

Two reported incidents resulted in the offenders being thwarted in their endeavours and the information given to the police was first class and will, it is hoped, result in the identification of the offenders.

Police Team & Liaison Co-ordinator

## By the way...

Can you spot the Painswick connection between the following? - (1) a tree; (2) a royal grinder; (3) healthy; (4) a place to grow fast; (5) a tall flower; (6) a margin. Answers on page 11.

By Rambler

## PAINSWICK ELECTRICAL SERVICES

*N.I.C.E.I.C. approved CONTRACTORS*

SERVICE

INSTALLATIONS

REPAIRS



The Electrical Contractors Association

Mr M TURNER

2, Folly Lane, Stroud, Glos. GL5 1SP  
01453-758342 and  
Painswick 812659

## GODDARDS GARAGE

Cheltenham Road, Painswick



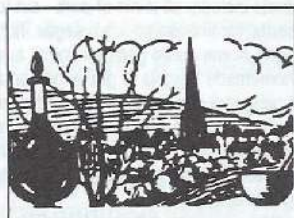
- \* Brake Safety Centre
- \* Full servicing & repair facilities
- \* Pre-MOT checks/MOTs arranged
- \* Ti Crypton engine tuning service
- \* Petrol/Diesel/Tyres/Exhausts
- \* Private Hire Taxi
- \* Paraffin/Coal/Calor Gas/Charcoal

Personal attention for your car

Telephone - **812240**

## THE PAINSWICK PHARMACY

NEW STREET. Tel. PAINSWICK (01452) 812263



### OPENING TIMES

MONDAY TO FRIDAY

9.00 - 1.00 AND 2.00 - 6.00

SATURDAY

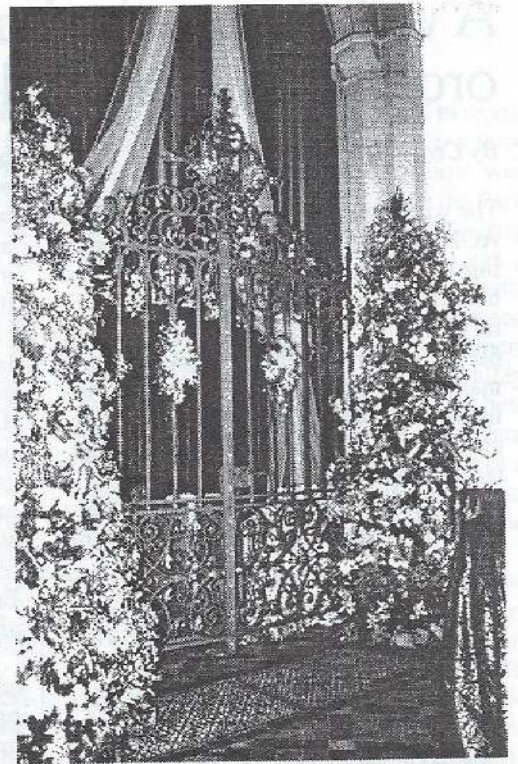
9.00 - 1.00

# A spectacular display

A dazzling and unforgettable sight greeted visitors to the Ascensiontide Celebration of Flowers in St Mary's Church on the weekend of 2nd to 4th June. It was a spectacular scene, combining breathtaking arrangements on a grand scale with miniatures of subtle and meaningful detail. The highest praise is deserved by all the talented people who contributed to this magnificent display, and especially to the Organiser Susan Shearer. Susan herself said she was overwhelmed by the support that was given to the St Mary's Flower Guild by so many people including contributions from Painswick's other churches and villagers generally, which made it, she says, a truly ecumenical event.

All voluntary donations are to be given to charity. At the time of writing the final amount is not known, but Susan says there will be at least £750 for each of the two charities supported - Cotswold Care Hospice and Jerusalem 2000. The latter is a Christian church in Jerusalem which the Archbishop of Canterbury is keen to support. It is difficult to assess how many visitors enjoyed the display, but some indication is given by the sale of over 1000 programmes.

Many visitors and villagers also took the opportunity to go and see the superb displays at St James's Church Cranham and St John's Sheepscombe.



*Right: Organ gates decorated by Anne Mills and her team. Below: Entrance to the South Porch - 'The Marriage Feast at Cana' designed by Anne Leoni and her team.*

## Gardens open for British Red Cross

Several Painswick gardens will be open to the public in aid of British Red Cross on Sunday 16th July. The gardens are all on the south side of the village. They are:

Stepping Stone Cottage, Kingsmill Lane (Mrs B Dunn)

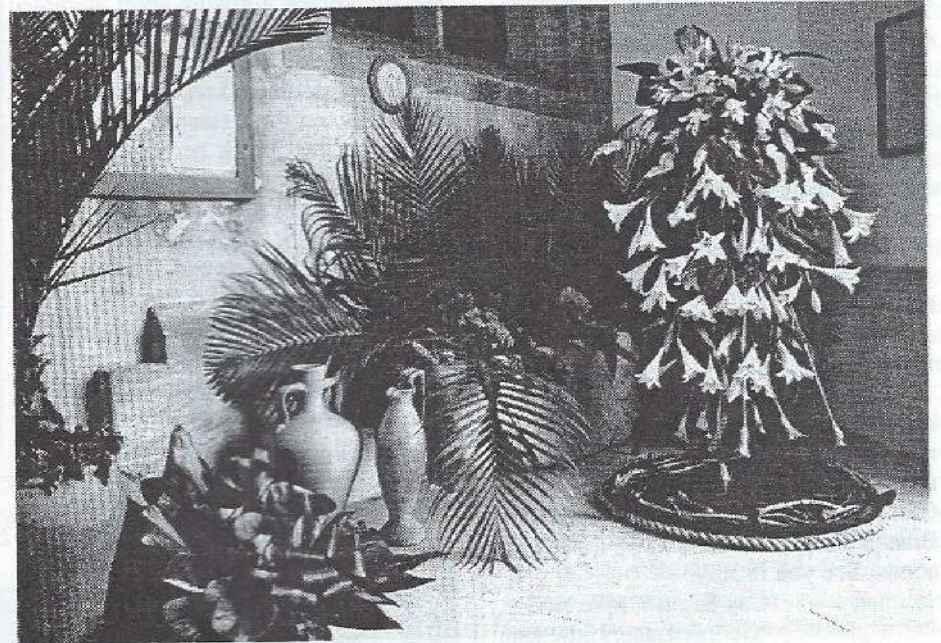
Wayland, Cotswold Mead (Mr and Mrs Allen)

Old Meadow, Cotswold Mead (Mrs J Percival-German)

Woodridings, Cotswold Mead (Mr and Mrs Stuart)

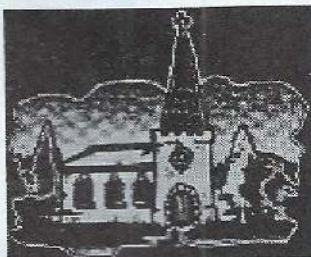
Sheephouse (Mr and Mrs Gardiner). (Long walk from Stepping Stone Lane - car may be preferred)

The gardens will be open from 2pm to 6pm. Teas are available at Sheephouse.



## PAINSWICK VILLAGE DENTAL SURGERY

Les Robinson B.D.S.  
Private, BUPA, Denplan



Appointments available Monday to Saturday and late evening Thursday

\* Cosmetic Dentistry \* Hygienist  
\* Personal Professional Service in Relaxed Atmosphere

**TEL: (01452) 814427**

Hoyland House, Gyde Road, Painswick, Glos.  
GL6 6RD

## Fire Service response

Painswick Fire Station Sub-Officer Mike Powis reports that there was an encouraging response to last month's plea (June Beacon) for retained firefighters, with nine people making enquiries and some of these putting in application forms. As a follow-up, leaflets are also being distributed to houses around the village, and it is hoped that more people will come forward. Please call at the fire station between 7 and 9pm on a Wednesday evening or contact 01242-512041 for more details..

**'By the way' answers**  
(see questions on page 10)

They are all the names of lanes, as you probably knew. 1 Beech, 2 Kingsmill, 3 Hale, 4 Greenhouse, 5 Hollyhock, 6 Edge.

## YEW TREE TAILORING

Gentlemen's Made-to-Measure Suits, Jackets & Trousers

Quality Ready-to-Wear Clothing also available

Home Visits if Preferred

**Painswick (01452) 812594**

## Richard R Gittins Building Contractor

Stone Masonry Work : Extensions : Roofing & Maintenance Work

**Tel: 01452-814475**

Reg. NHBC and DSWA

Beechdene, Jacks Green, Sheepscombe

# A walk to see the butterflies and orchids on Painswick Beacon

By Cedric Nielsen

The walk was arranged by the Cotswolds AONB Partnership, with the aim of showing the abundance of wild flowers and butterflies that live in the herb rich natural grassland of our Common. About forty people gathered at the walkers' car park, many of whom were from Painswick. Fortunately the weather was warm and sunny creating good conditions for both the butterflies and walkers.

As the group walked onto the Common, a birdsnest orchid was found

beneath the Cotswold Way sign, our first orchid of the day. In the uncut grassland beside the Way we found spotted orchids and twyblades, together with blue milkworts, horseshoe vetches and wild thyme.

The butterflies of this type of grassland are usually small and quite difficult to see until with practice you recognise them; there are also several species of colourful day-flying moths present. The group found common blues, brown argus, and small heath butterflies. However, the star of the walk was the small blue butterfly. It is the smallest butterfly found in England and despite its size, it flies at an amazing speed through the grass stems.

As the group progressed, they came across large patches of yellow rattle, a parasitic plant living off the roots of grasses. Wherever they occur the grasses are suppressed allowing short stemmed wild flowers to grow.

Painswick Common is well known for its juniper shrubs and we were able to examine two on the sixteenth fairway; one had green and black berries. There are twenty-two shrubs scattered over the Common, some are large mature plants while others are much smaller.

Further on we found the first pink flowering spikes of the fragrant orchid. On the old quarry waste tips fly orchids were found in several places. These drier slopes are good spots to find yellow rockroses and several species of vetches.

Having climbed to the summit at the Beacon and enjoyed the panoramic views of the Severn Vale and Malvern Hills beyond, the return journey was made special when a good specimen of a bee orchid was found in full flower.

## Come and look at Gay's Ark!

I did not say goodbye to Painswick when I moved to Littledean last year and retired from District Nursing, as I already knew I was booked to talk to the Senior Circle on 7th July. Friends in Painswick have supported me in my new venture and this will be an opportunity to give an update on events. But I have also had numerous requests from those who would like to come and have a look. On Friday 14th July, 12 noon to 4pm, and on Saturday 15th July, 10am until 4pm, I will therefore be open for inspection, time allowing, with all the animals. A bun and coffee will be provided.

To have some idea of numbers and for direction telephone 01594 823058; leave a message and I will get back to you, I am rarely indoors! Any donations for the Gloucestershire Support Group of the Rare Breeds Survival Trust will be most welcome. See you in July.

Gay Seguro, Pike House,  
George Lane, Littledean

## Happy couple



Alison Holland and Allan Bullingham sign the register during their marriage service at Christ Church on 27th May

## It's an ill wind...

Hold ups, emergency traffic lights and holes all along the road; the people of Painswick must by this time be heartily sick of the noise and diversions caused by Severn Trent Water Board and their contractors.

Painswick Friends of Cotswold Care Hospice were horrified to find that the A46 road through the centre of the village was being closed on the day they were due to hold a coffee morning in the Town Hall. Then a committee member's husband had an idea. Why not write to John Kennedy and tell them of our fears about the loss of revenue? Within a few days a letter came back enclosing a cheque for fifty pounds!

Thanks to John Kennedy and to the residents of Painswick who 'stormed the barricades' to attend, £319 was raised. We are most grateful for everyone's support and generosity.

Joan Ashton

Paula Woodcock

## British Red Cross

May I, on behalf of Painswick Red Cross, thank the collectors for giving their time, and the people of Painswick for their generosity during our collection week. We raised the sum of £563.88.



**Allen Hale**  
Your local stockist for  
The Real Meat Company

Allen Hale  
New House, Friday Street  
Painswick. Tel 01452 813613

BRINGING YOU FLAVOUR  
WITHOUT EQUAL.  
WELFARE WITHOUT COMPROMISE



## The Falcon Inn

Superb LUNCHES and DINNERS in our restaurant every day. Bar snacks, morning coffee.

The recently refurbished STABLES ROOMS are available both daytime and evenings, complete with their own bar, for your private receptions and parties of up to 60 persons.

Our en-suite bedrooms have every modern facility and are ideal if you have friends or relatives coming to visit you in the PAINSWICK area.

Call FIONA or JON on 01452-814222 for more details

## High hopes for Youth Club

Youth Club leader Jenny Broadbank wishes to remind readers and especially potential members that the Club is open and going well. She says that recent changes and doubts about the long-term future of the Club may have led some members to believe that it had closed down but this is not the case. In fact Jenny has been encouraged by the numbers coming along, and a warm welcome awaits any newcomers, especially younger members.

The Club now meets on a Wednesday evening, from 7.30pm to 9.30pm. It will be closed for two weeks in July - the 12th and 19th - but will open again on the 26th.

Jenny says she was rather disappointed with the response to the questionnaire that was distributed to Croft School parents, and the numbers expressing an interest do not as yet justify having a Junior Club on a separate evening, but she thanks those who replied.

*Have you a receipt numbered between 001 and 607?*

Beacon subscribers - at 20th June			
	2000-01	1999-00	1998-99
New/Returned	82	139	123
Renewed	525	518	498
To date	607	657	621

## Painswick 100 years ago

Painswickians demonstrated their patriotism when the news arrived of the occupation of Pretoria by British troops. A procession was formed, headed by thirty lads carrying Chinese lanterns, then the Painswick Brass Band followed by 150 torch bearers and Capt Burdock with Painswick Fire Brigade. Effigies of Kruger and his 'missus' were carried by four stalwart men. The principal streets were paraded and the procession halted in front of the Town Hall, where there was enthusiastic rejoicing. The effigies were preserved for future occasions.

Upon the instructions of Miss Kirkham, Spring and Son offered for sale at an auction held at the Falcon three stone-built copyhold cottages located in Vicarage Street. Mr A H Phippen bought the cottages for £100.

The long talked of trip to the continent, arranged by Rev W H and Mrs Seddon, came at last and the lucky voyagers duly set out for Oberammergau. Some 16 or 17 Painswickians left for London and thence to Flushing. If travel arrangements worked out the party expected to spend a couple of days in the mountains. A rule was imposed that spectators of the passion play had to spend two nights in the village prior to the Sunday fixed for the performance. Having witnessed the passion play the visitors commenced their return journey on the Monday.

The Church bells were a source of pride, not only locally but throughout the county. It was said they were the best 'peal of twelve' outside London. To raise

money towards the £500 needed to repair woodwork and re-hang the bells, a two-day bazaar, fete and flower show was arranged for the 12th and 13th in the Park of Painswick House. Lady Marling opened the bazaar, where there was a choice selection of fancy and useful articles. There was a procession of decorated bicycles, swing boats, phonograph operated by Dr Boreham, and a bowling alley with two pigs offered as prizes for the best bowlers. A special tit-bit in the bill of fare was the Painswick Bow-Wow Pie - not a dainty doggy comestible but a harmless bran pie into which, for a small fee, one could dip for a prize.

A strange occurrence was reported in connection with the home of Arthur Workman in Butt Green. Mrs Workman was attending to her household duties in the front room when the sudden fierceness of lightning forced her to flee, leaving wide open both the door and window. She had just dusted the family Bible and returned it to the table under the window and had hardly left the room when the electric discharge passed right through the house. The Bible was struck and the old leather binding was torn to shreds and incinerated. Curiously a dictionary and an old law book, a pack of cards and a decanter of wine which formed the Bible outposts, suffered no injury. In fact nothing else was struck in the house, and it was said that if the ways of Providence were not so mysterious and inscrutable this would be very remarkable indeed.

The ancient office of town crier, with its loss of functional activity, had gradually deteriorated into a sinecure title only. Thanks to a local historian, the secretary of the Painswick Gas Works, the office was this month revived. Mr Saltmarsh, whose tonsorial vocation and accessible business premises in New Street particularly fitted him for the job, was duly appointed. The initiation ceremony was carried out and almost immediately the bell and insignia of office were displayed in the street above the shop.

John Bailey

## Outdoor fun for Playgroup



*Painswick Playgroup took to the open air on 19th June, taking advantage of the brief spell of wonderful weather.*

### TREE SURGERY Environmentally Sensitive

Thinning - Reshaping - Felling  
Planting: Fruit Tree Pruning:  
Wildlife Advice  
Professional Service: Fully Insured:  
Vision 21 Accredited

Landcare Services  
6 Pullens Road, Painswick

John Rhodes  
812709

## DON'T MISS...

... tonight's (Saturday 1st July) Wacky Races Night at the Painswick Centre! There's fun for all the family and the £5 entrance charge includes a ploughman's supper, video horse races, table top pig races and Gerties Milking Marathon. If you haven't already bought a ticket just come along and pay at the door. Beacon Hall, 7.30pm. Proceeds are for refurbishment of the Centre.

## Story Time

Children's activities and story times are planned at Painswick Library during the summer holiday. Keep a look-out for details.

## Sponsored bike ride

I have completed my 25 mile ride for Teckels Animal Shelter. I will put my certificate of completion into the Chemist. I would appreciate sponsorship donations to be paid as soon as possible please. Thank you to all those who have supported me this year.

George Hodder.

### CHANGING SCENES

A Painswick Boyhood  
in the 1940s

At the Post Office, Londis Store and  
Stroud Bookshop

or from the author  
**JOHN MERCER**  
01453 759635

### Max Knowles

PG Dip CGLI (Adv)



Stonemason and Conservator

- SPECIALIST IN LIME MORTARS FOR REPAIR AND CONSOLIDATION
- SITE SURVEYS AND CONSULTANCY
- ARCHITECTURAL CARVING
- SYMPATHETIC STONE CLEANING
- BESPOKE HEADSTONES
- CARVING COMMISSIONS

5 Glencairn Park Rd. Cheltenham Glos GL50 2NA  
Tel/fax (01242) 242242

## CLUBS AND SOCIETIES

### Ooh la la! French Naughties Shock For Painswick! A Royal Flush On Victorian Market Day?

Risqué scenes of abandoned lust, liaisons dangereuses, nights of steamy passion. But that's enough of PaDS committee meetings.

The big news this month concerns Victorian Market Day (8th July). I have to report that there has been a shocking French hijack (or should that be 'haut-jacques'?) of the the PaDS 'What The Butler Saw' machine! Instead of displaying (as was planned) living pictures of uplifting tableaux from English history or instructive scenes of other peoples in other lands, it appears that we have mistakenly been sent a programme entitled 'Follies de Paris'. This features a series of 'divertissements de passion', acts of full-frontal debauchery, ladies caught in flagrante delicto and other shameless scenes of nudity, rudity and lewdity. I haven't actually witnessed any of the material myself: The Most Organised One saw to that. But the MOO assures me - and she has viewed it all very carefully several times to be certain - that the scenes on display are really quite shocking and totally unsuitable for the gentfolk of Painswick. Apparently, in one scene a

couple - not even man and wife - can actually be seen to conjugate quite openly in French!

Dear reader! I set all this down not, you understand, from any sense of voyeuristic titillation, but rather as a warning to be on your guard lest you be tempted to insert the 50p, which is all that is required, and are corrupted by several minutes of this so-called entertainment. One shudders to think what would happen if our good Queen Victoria, who is graciously visiting Painswick on the day in question, should happen to catch a glimpse. One is unlikely to be amused. No doubt her 'ghillie', Mr John Brown, will protect her sensibilities. Incidentally, I have been asked by the Organising Committee to make it quite clear that, contrary to rumours currently circulating, there will not be a competition to guess what the said Mr Brown is wearing under his kilt.

And finally. I was hoping to bring you news of the next PaDS (Autumn) production, hot from the committee meeting. But what with all the risqué scenes of abandoned lust etc, it seems they just didn't get round to making a decision. Apparently, at least two plays and two directors are in the running: the competition is getting intense.

Stand by for more dramatic outbursts next month.

Jack Burgess, PaDS

<http://freespace.virgin.net/louis.n>

## Talk on owls

There will be a meeting of Painswick Bird Club next Tuesday, 4th July, when Mike Freeman of the Cheltenham Bird Club will be giving a talk, with slides, about British and European Owls. The meeting is at 7.30pm in the Town Hall.

## Wives' Fellowship

At the next meeting of Painswick Wives' Fellowship, Wednesday 5th July, there will be a talk about the work of the Brooke Hospital for Animals. The meeting is in Christ Church Hall, Gloucester Street, commencing at 8pm, and all ladies are welcome.

### A.J. BULLINGHAM LANDSCAPE & GARDEN SPECIALIST

All aspects of garden work undertaken

- Ponds • Patios
- Brickwork
- Dry Stone Walling
- Turfing • Plating
- Fencing
- Tree Surgery



**01452 813155**  
**Mobile 0374 460139**

3 Upper Washwell,  
Painswick, GL6 6QY

## PAINSWICK OSTEOPATHS

Paul Stamp DO  
Helen Froggatt DO

BUPA

P

PPP Registered Osteopath

Painswick Doctors' Practice

**01452 301748**

Parking and evening appointments available

# THE BEACON SINGERS SAY GOODBYE

A couple of weeks after my arrival in Painswick in 1958, I was amazed to encounter Cuthbert Webb, whom I had met whilst singing in the GODS production of Carmen in Gloucester. He immediately asked me if I would like to join a small choir which he had been running for a couple of years. I was delighted to find music on the doorstep, and so began an association with the choir which has lasted forty-two years.

At first Cuthbert ran everything himself, and records of the earliest concerts given locally have been lost, but the choir was successful and grew, and by 1966 a small committee was formed to take some of the burden of management. It was decided that it would be appropriate to call the choir 'The Country Singers'.

A nucleus of Painswick singers was soon augmented by others from around the Stroud area, and the choir expanded its repertoire and concert venues. Gradually, churches and village halls throughout the Five Valleys, and further afield, were treated to a wonderful variety of music, both sacred and secular. We sang regularly at Christmas and during Holy Week, with a repertoire of cantatas, oratorios, Passion music and carols. Harvest Suppers and Flower Festivals gave us a chance to indulge in lighter popular music, including part songs, light opera and, of course, Gilbert and Sullivan works. We were fortunate to have members of the choir able to sing solo roles, and contribute to interesting programmes. Once we sang in Bristol at the University Settlement. Several times we sang at Gloucester Prison (and were let out again afterwards). Once we were cajoled into taking part in the Cheltenham Competitive Music Festival.

In 1975 Cuthbert had completed twenty-one years as conductor and musi-

cal director, but shortly afterwards he became ill and, although he continued as Choirmaster, by 1980 he had to resign. His wish was that 'The Country Singers' should cease, but many of the choir did not want to do this, and resolved to carry on as 'The Beacon Singers'.

A difficult few years followed, during which we had several conductors and accompanists, all of whom added their flair and expertise to developing new musical delights. Practice rooms became a problem, but Mr and Mrs D Baker helped us out by allowing us to use the music rooms at their various homes for a number of years, until finally we found a "permanent" room at the Library in Painswick, which we furnished with a piano.

There were years of good fellowship and fun, and a few near disasters. Once a coach which was to take us to sing at Hullavington in Wiltshire, at a Festival Closing Service conducted by the Bishop of Malmesbury, failed to turn up at the car park, and we all had to scurry around to marshal cars to get us there on time. On arrival our organist was missing, and Jean Lee, a soprano and organist herself, had to fill in until he arrived. A rather embarrassing moment as the Bishop, mitre and crozier in place, was waiting in the porch.

At Newent, in the midst of singing 'Elijah', the organ broke down and our organist had to do a quick repair. At Bisley Methodist Church half of our programme was sung by torch light, as there was a power cut.

Sometimes we had wonderful appreciative audiences, sometimes few came, particularly on cold wet nights when they knew how draughty the venue was likely to be.

But over the years, through many tri-

als and tribulations, we have managed to continue to provide live entertainment, which has benefited many a local charity.

Now, sadly, the choir has agreed to disband. Lack of new young members has brought our numbers to a point where concert-giving is no longer feasible.

I finish on a personal note and will finish in the same way, but I think I speak for all the Singers, who have been enjoying this very worthwhile hobby for so long. Learning new works, revising old favourites, and working towards performance has always been stimulating, and I regret the decline in participation of young people locally. Like twenty other singers I will miss my Monday morning rehearsals, and some of the friends I have made through them. Let us hope that one day a new young choir will emerge to continue providing vocal music in Painswick.

Audrey Timpson

FOOTNOTE. The Beacon is sure that all villagers will wish us to express grateful thanks to the Singers for the immense pleasure that they have given over the years. They leave behind many happy memories - of imaginative performances of modern works as well as classical favourites, light-hearted concerts, raising the roof at Christ Church with hearty carol singing, poignant duets performed by Graham Luker and Enid Walklett, Elizabeth Baker's expertise with folk songs and guitar as well as the classics, and much more. Above all, perhaps, we will remember the relaxed and joyful atmosphere that seemed to pervade all their concerts.



*The Beacon Singers, complete with metal hats, giving a Variety Concert in the Church Rooms in November 1994*

## Building Repairs Painting & Decorating Carpentry

T MIFFLIN

Enquiries Welcome  
Telephone Painswick 813866

## PAINSWICK MEMORIALS

HEADSTONES  
VASES & PLAQUES  
PET MEMORIALS



ADDITIONAL  
INSCRIPTIONS

FULL RESTORATION &  
CLEANING SERVICE

PHONE FOR A FREE COLOUR BROCHURE  
TEL / FAX : 01452 - 812032  
MOBILE : 0797 - 9282643

FREE HOME VISITS AVAILABLE

# Senior Circle hears two contrasting adventure stories

When, as a new member, I was asked to write up our meetings for the Beacon, little did I appreciate the task ahead or how stretched I would find myself in doing so. This is no Tea and Chat Club - the speakers are certainly worthy of U3A and like organisations. And our meeting on 27th May was certainly no exception when Mair Daly talked of 'The Years Between'.

Born in America, returning to Wales early in life, she and her parents and brothers lived in the shade of the Great Orme, near Llandudno. On then to Domestic Science College in Edinburgh and a teaching career but soon she wanted to see more of the world and Africa beckoned. Such was her pioneering spirit - though circumstances were not what she had expected in her admittedly naive youth. Her first post found her set to teach at a college (still unbuilt) and a school as primitive as her accommodation.

Gritting her teeth she coped, the happy children and especially their beautiful singing at the Mission gave her something to look forward to each Sunday.

I cannot do justice to her amusing and descriptive tales of life out there as a young single girl - suddenly told to teach mothercraft - with a hastily borrowed baby to practice on! From living in tents in a very primitive and backward area, to a house of her own, from being terrified flying in the minutest of planes up country, eventually to having her own land rover, driver and messenger, she travelled on in her career. As an Education Officer she was responsible for examinations

up to Matriculation - the main aim of all this being to improve the education of young girls in a country where boys always had priority. She introduced, with the help of Colonial wives with little to do in their homes, a badge scheme similar to that of the Girl Guides, which enabled young girls eventually to go into primary schools themselves to teach cookery, needlework, hygiene and home and mothercrafts.

This is excellent book material with photographs and letters portraying her work over many years which gave her such inspiration. She was clearly loved and respected. Mair met Pat out there and they married but with the change from Northern Rhodesia to Zambia they felt they should return to England and finally retired to Painswick, where, she says, they are very happy but it is obvious that she still holds a great love for Africa.

On 9th June we spent a very pleasant afternoon with David Leach sharing his photographic memories of when he walked, sometimes with his wife and son, and nearly always with his faithful dog, from London to Cornwall to see the Eclipse on 11th August 1999.

David Leach is obviously a keen walker, a Lands End to John o'Groats type with the Himalayas next in his sights. Talking to his wife, I heard, surprisingly, that walking is really the easiest part of the whole plan; it's the organising that's the real headache. David's Eclipse walk was of some 728 miles and took 61 days spread over four and a half years with 700 slides (we didn't see them all!) taken at varying times each year.



For us, sitting comfortably, we set off with a glimpse of the Thames Estuary Fort from Napoleonic days, the attractive marshes of Kent, fishing boats at Deal and

the sparkling white cliffs of Dover in summer sunshine, whilst the Camber sands we saw in January with snow on the beach. Later that year it was the South Downs, pretty Bosham Church near the lovely stretch of water near Itchenor which brought back happy memories.

Another winter gone and it was back on the trail to see the New Forest ponies, Studland Bay, and Dorset, exhausting walking but just right for some lovely shots of sand, sea and cliffs. Dawlish Warren saw an end to his travels that year. But spring again at Slapton, with its tragic history, Plymouth and on to the SW Coastal path with the Lizard in sight, and lovely Portloe and St Just in Roseland before the end of yet another year. Still undaunted, he went back to the Helford River, and walking the coastal path, eventually it was 11th August and Marazion. We'd read how media hype had frightened people away and there were long stretches of deserted Cornish beaches as proof. His chosen spot for watching the Eclipse was a rocky promontory with only a few travellers around, and as quiet as the grave. As the sky darkened, the silence was suddenly broken by a woman dressed all in black brandishing a sword and plunging it into the earth - but not before David had taken a remarkable silhouette of her against a deepening orange sky. Surely a prize-winning shot to end on.

This was yet another excellent afternoon with a very professional speaker and photographer.

Daphne Hudson

## SMITH BROS.

**GENERAL BUILDERS AND DECORATORS**

- NATURAL STONEMWORK
- ROOFING - ALL TYPES
- NEW BUILD & EXTENSIONS
- ALL REPAIRS - MAINTENANCE WORKS
- ESTABLISHED 1956

2 Gloucester Street, Painswick,  
Gloucestershire GL6 6QN  
Telephone: Painswick (01452) 813051

## Bellringing news

Two visiting bands came to the tower in June and on both occasions the bells were well struck. On 6th June the St James Cathedral Guild of Change Ringers from Toronto were in Painswick and then on 10th June the bells were rung by a band from the Abingdon area.

The Painswick band try to ring for Sunday evening services on the first and third Sundays of the month, having rung for practice on the previous Monday. The forthcoming dates are as follows: Sunday evening services: 2nd and 16th July; Monday evening practices: 10th and 31st July.

Patsy Sykes-Wright



**A. J. FERN**  
CARPENTER-JOINER

and  
General Building Services

Telephone: Stroud 750105

**Bastet Boarding Cattery**

**NOW OPEN**

Proprietor - Janet Horner  
Feline Advisory Bureau Trained

Forty Acres, Wick Street  
Stroud

**Tel: 01453 752006**

Individually heated chalets with  
outdoor runs



# The Painswick Beacon

VILLAGE DIARY to SATURDAY 5th AUGUST 2000

July			
Sat 1st	Edge 'Millennium Fete', including return of cyclists at end of 1000 mile sponsored cycle ride from Spain	Edge Village Green	5pm
	Wacky Races Night at Painswick Centre. Tickets £5 to include ploughman's supper	Painswick Centre	7.30pm
	Judi Whitton's Annual Exhibition of Watercolours (Until 16th July)	Town Hall	10.30 - 5pm daily
4th	Painswick Dog Training Club (Tuesdays) - Puppies and Beginners Intermediate Advanced Dogs	Christ Church Hall	9.30 - 10.15am 10.15 - 11am 11 - 12 noon
	PCMS: AGM and Talk by the Vicar	Church Rooms	8pm
	Painswick Bird Club: Owls - Mike Freeman	Town Hall	7.30pm
5th	Conversational French Classes (Advanced) Conversational Italian Classes (Intermediate)	Library Rooms " "	9.30 - 11am 11.30am - 1pm
	Painswick Probus Club	Ostlers Room, Falcon	10am
	Wives' Fellowship: Brooke Animal Hospital - Mrs Daunt	Christ Church Hall	8pm
6th	Cotswold Care Support Group Meeting	Ashwell House	2.30pm
7th	WI Market: Fridays	Town Hall	10am
	Senior Circle: Gay's Ark - Gay Seguro	Town Hall	2.30pm
Sat 8th	Victorian Market Day. Numerous entertainments. Parking available on recreation field.	Painswick Streets	All day Grand opening, Town Hall, 11am
	Painswick Bowling Club Open Day and refreshments Further information John Holmes (812755) or Edna Crawford (525673).	P'wick Bowling Club	
	Summer Concert: "Copious Notes" Tickets £5 (Tel. 814286 & 814415) in aid of Croft School PTA	Croft School	8pm
11th	Conservation Society outing to Dyrham Park (Coach leaves)	Stamages Car Park	12.30pm
	Mothers' Union: Tour of Cirencester Parish Church, followed by Tea at Margaret Lawrence's new house	Cirencester	2.30pm
12th	Conversational French Classes (Advanced) Last Session Conversational Italian Classes (Intermediate) Last Session	Library Rooms " "	9.30 - 11am 11.30am - 1pm
Sat 15th	Pitchcombe Fete	Pitchcombe House	2pm
16th	Painswick gardens open in aid of Red Cross	Around Painswick	2pm - 6pm
18th	Jazz Evening: Local Musicians, no entry charge	Ostlers Room, Falcon	8.30pm
18th - 22nd	Gloucestershire Drama Association production of 'As You Like It'. Tickets (£9.50), 01453-844581	Rococo Garden	7.30pm Picnic from 6pm
19th	Probus Meeting	Ostlers Room, Falcon	10am
	Wives' Fellowship Barbecue (Kingsmead)	The Latchetts	7pm
	Parish Council Meeting	Town Hall	7.30pm



20th	W.I.: Garden Meeting (If wet, in Town Hall)	4 Court Orchard	2.30pm
21st	Croft School Leavers' Service, followed by Coffee in Croft School Hall (see main pages)	Christ Church Croft School	9.30am 10.45am
	Senior Circle: 'The History of the Argentine Railways' - Mario Lopez	Town Hall	2.30pm
23rd	<b>COPY DATE: All items to Mrs Jillie Speed, The Old Carriage House, Edge, or Beacon Postbox in New Street</b>		
	Annual Mencap Service	Christ Church	6.15pm
23rd - 30th	'Inspirations' - Exhibition of fine art, calligraphy, painting, sculpture and ceramics by local artists	Town Hall	10am - 5pm
25th - 5th Aug	Country Studio Exhibition of painting and sculpture	Library Room	10am - 5pm Sun 10am - 4pm
27th	<b>DIARY DEADLINE: All items to Mrs Edwina Buttrey, 14 The Croft, or Beacon Postbox in New Street</b>		
Sat 29th	Conservatives Annual Book Sale and Filter Coffee/American Cookies Morning	Town Hall	10am - 12 noon
	Coffee Morning in aid of Oncology Unit, Cheltenham Hospital	2 Gloucester Street	10am - 12 noon
	Christian Aid Garden Party (by kind invitation of Prof and Mrs Burge) Stalls: Teas in the Coach House	Yew Tree House, Vicarage Street	3 - 6pm

#### August

Sat 5th **August Issue of The Painswick Beacon Published**

#### Cricket Fixtures

Sat 1 July	1st XI v Cheltenham Saracens 1st XI (Home). 2nd XI v Cheltenham 2nd XI (Away).	Sat 22 July	1st XI v Cheltenham Extras (Home). 2nd XI v Aston Ingham 2nd XI (Away).
Sun 2 July	Painswick v Quedgeley (Home)	Sun 23 July	Six-a-side tournament (Home).
Mon 3 July	Painswick v Brasted Chart & Invicta (Home).	Mon 24 July	Painswick v Little Baddow (Home).
Sat 8 July	1st XI v Old Richians 1st XI. 2nd XI v Shurdington 2nd XI (Home).	Tue 25 July	Painswick v Cadham Nomads (Home).
Sun 9 July	Painswick v Stanway (Away).	Wed 26 July	Painswick v Jesters (Home).
Sat 15 July	1st XI v Birdlip 1st XI (Away). 2nd XI v Birdlip 2nd XI (Home).	Thu 27 July	Painswick v Hanwell (Home).
		Fri 28 July	Painswick v Captain's Eleven (Home).
		Sat 29 July	1st XI v Frampton on Severn 1st XI (Away). 2nd XI v Cheltenham Civil Service 2nd XI (Home).

Advertisement

#### Hampton's Property Report July 2000

# HAMPTONS

INTERNATIONAL

The Old Chapel, Bisley Street  
Painswick, Glos. GL6 6QQ  
Tel: 01452 812354  
Fax: 01452 813279

email [painswick@hamptons-int.com](mailto:painswick@hamptons-int.com)  
The ultimate property se@rch: [www.hamptons.co.uk](http://www.hamptons.co.uk)

It has been reported that over the past eight weeks the marketplace has fundamentally shifted and this has been characterised by a growth in supply and a downturn in demand. This will eventually lead to prices of property becoming more stable, a move that will be welcomed by most people.

However, here in the Painswick Office we, as usual, continue to be extremely busy both in marketing and in selling. Recent instructions include Downfield Cottage between Bulls Cross and Birdlip, Little Garth in Tibbiwell - a rarely available bungalow, Brookhouse Mill Cottage - a delightful period cottage with 5 bedrooms adjoining the

stream with a separate indoor swimming pool, The Old Stores at Cranham, Laura's Cottage on the Cheltenham Road and an historic 15th century black and white house in Upton St Leonards.

Exchanges that have taken place during this last month have been Yew Tree Barn off New Street, Tabithas in Vicarage Street, The Old Bakery, Cheltenham Road, Stone Place also in Cheltenham Road, Walnut House in Upton St Leonards and Highcroft behind the Royal William; and several more are nearing completion.

We are very excited here with the latest computer technology which we would like to share with you. If you have access to the internet we would recommend that you find the Hampton International web site ([www.hamptons.co.uk](http://www.hamptons.co.uk)) and select the Painswick properties., two of which have a new 'button' marked "Virtual Walkthrough". Select this and you will see a colourful video of the property, both internally and externally.

No matter how modest or grand your home is we are always willing to assist whether it is valuing or selling or perhaps long term planning. Please do not hesitate to call us on Painswick 812354.



## Macmillan Nurses and the WI

It was in 1911 that Douglas Macmillan, who had seen his father die of cancer, founded the nursing organisation that bears his name. In June this year Mrs Margaret Taylor, an administrator with Gloucestershire Macmillan Cancer Relief, came to tell Painswick WI members about the work of the nurses, emphasising that the illness is a subject more talked about now than used to be the case. Explanations are more likely to be given in layman's terms, she said, and patients are helped to be positive. Macmillan nurses can be male or female; they are available from diagnosis onwards and are cancer care specialists. They are there to relieve the stress and strain of the patient and to support the family. Members listened with close attention.

Mrs Taylor mentioned several forthcoming fund-raising events such as the nationwide coffee morning on 29th September, Macmillan sponsored walks, a supper at Rendcomb College and Christmas concerts. On a particularly local note, she said that one ton of yew tree clippings

yields two grams of taxol, used in cancer treatment.

During the business part of our meeting members heard a report from Doreen Boon, our delegate at the WI Triennial General Meeting at Wembley, where the Prime Minister had also happened to be present (with a certain amount of press coverage!).

Members were pleased, too, to hear that £300 earned by the sale of our leaflet 'Walks around Painswick', had been used to buy new crockery for the conference room at the Painswick Centre.

NOTE: Our meeting on 20th July is to be held in Barbara and David Harley's garden at No 4, Court Orchard (if fine, otherwise in the Town Hall; so fingers crossed!) Colours for the afternoon are purple and cream. Members are asked to try to wear something in one or both of these colours. Failing all else, a button-hole will do, we were told. The competition is for a garden party hat decorated in one or both of the colours.

Dorothy Binns

## Conservation close to home

Some thirty Members of the Conservation Society greatly appreciated the invitation to visit the grounds and home of Charles and Mary Muller, Lovedays Mill, on 14th June. The evening was fine and the visit commenced with a fascinating introduction by Howard Beard to the numerous foot-stones accumulated and carefully displayed in the grounds of the mill. As many will know, Mr. Beard's family have lengthy local connections, and he has not only published material about local artifacts but studied the origins and other aspects of these stones.

Charles and Mary Muller then invited us into their home and, after refreshments suited to this late spring evening, we were told about much of its history and shown around the principal rooms. An altogether delightful evening.

The other mid-year event will be a coach trip to Dyrham Park, the National Trust property way down the A46 towards Bath. So, on 11th July we will again benefit from experts sharing their knowledge about this magnificent building, and view parts only fully restored this year. Afternoon tea will be on offer, and we expect this to be another relaxing and both sociable and informative occasion. Tickets are still available from Dawn Mallinson at the Patchwork Mouse.

Dawn Mallinson

### LANDSCAPE GARDENING

*A Complete Garden Service*

*Regular Garden Maintenance  
Grass Cutting, Hedge Trimming*

Construction of:-  
*Ponds and Water Gardens  
Drystone Walling, Paving  
Fencing, Turfing, Seeding  
All Aspects of Tree Surgery*

FULLY INSURED  
*Ask for Adrian Harris*

**Floribunda**  
(01452) 527647

### Paul A. Morris

City & Guilds

General Builder \* Plastering \* Patios  
Dry Stone Walling  
Natural Stone Work A Speciality  
Hard Landscaping

18 Strachans Close Stroud Glos GL5 3EB  
Telephone (01453) 752004  
Mobile 0781 8087375  
Email: paulmorris72@hotmail.com

FREE ESTIMATES

**Liberty Print Curtains.** 29" (74cm) wide x 87" (221cm) drop. Green background. Two pairs available. Hardly used. £90/pair. 814125

**Electric convector heater for sale.** 27" x 19" high x 4" deep. Good condition. Apply to Miss Jones, 3 Churchill Way, Painswick.

**To Let in Pitchcombe, Bungalow unit,** one bedroom, in quiet location overlooking the Painswick valley. Telephone 812682

**Lanzarote.** Luxury one bedroom bungalow on quiet beach-front resort with three pools, restaurants, bars and shops nearby. Vacancies most months. From £180 pw. Telephone 01452-611873

**Mahogany Corner Cabinet for sale.** 69 inches high, 14 inches deep and 25 inches wide. £500. Please telephone 813122

**Country Studio Exhibition of Painting and Sculpture** in Painswick Library Meeting Room, July 25th to August 5th 10am - 5pm weekdays and 10am - 4pm on Sundays.

**Graduate Arts Student** - reasonable portraits of pets and people in pencil at reasonable prices. Contact Ben Ballester on 813536.

MINI-ADS - non-commercial, maximum of 30 words - are 10p per word with a minimum payment of £1. Maximum of 14 mini ads accepted per month. *Beacon* subscribers have 25% discount. Please send money with mini-ad to Leslie Brotherton, Longhope, Blakewell Mead, Painswick GL6 6UR. If paying by cheque, please make it payable to *The Painswick Beacon*. Receipts are not forwarded unless requested.

### ELECTRICAL

AND

### ALARM

SERVICES

New Installations, Rewires, Extra Sockets, Lights, Showers, Security Lighting, Economy 7 Heating, etc.

Professional intruder alarm systems fitted from £330. Remote control car alarms fitted from £70.

Door Entry and Closed Circuit Television Systems fitted

For a friendly, prompt and reliable service contact **Steve Gallagher** on Eastington (01453) 791209

ALL WORK  
FULLY GUARANTEED WITH  
NO ADDED VAT

# The Personal Column

## Welcome

We welcome TINA and MARK BLAKE who are moving into Holcombe Barn;

Mr and MRS MCKINLAY who are moving into Longridge Corrie;

IAN and SUDJI CALVERT on their move to 4 Stroud Road;

and DAVID and GIFFORD MORRIS who are moving to Brockley House, Bisley Street.

We welcome IAIN and BARBARA ANDERSON who have come to live at The Coach House, Tocknells Court, from Derby;

also SARAH WILLIAMS and GRAHAM TURNER who have moved to No 4 Churchill Way from Abbeymead;

and a belated welcome to Dr NINA LA HEI and Dr IAN CRABB who live at Berry Barn, Paradise.

We welcome Mr and Mrs HUGH JESSOP from Cheltenham who will be taking up residence at Stone Place, Cheltenham Road, in the near future.

## Farewell

We say farewell to MICHAEL BARNEY who is moving to Devon from Holcombe Barn;

and Miss HARTLEY and Mr MATTY who are moving to Cheltenham from Longridge Corrie;

and to STEPHANIE and GREG REED and their children Scott and Madison who are returning to the United States after living in Painswick for the past three years.

## Change of House

As from 30th June Reigh Sutton has moved from Stone Place to The Old Bakery, Cheltenham Road. (Reigh's telephone number is unchanged)

## Visitors from across the pond

Welcome to DOROTHY DIXON who is visiting Joyce Taylor from Toronto for the 29th year and ELIZABETH FOX over from Palm Springs. (Elizabeth is June Crane's sister)

## Academic Success

Congratulations to Fiona Buttrey on the award of Doctor of Engineering from

Swansea University for her work in Electrochemistry/corrosion.

## 90th Birthday

Congratulations to ISOBEL MANNERING who will celebrate her ninetieth birthday on 26th July.

## Get Well Soon

We wish a speedy recovery to DENIS TUFNELL, MARGARET BOUCHER, PEGGY WATKIN and GEORGE KNILL, who have been in hospital recently, and PAT SCREEN who has broken her ankle in a fall.

## Condolences

Sincere sympathies to the families and friends of TIM DRAKE of Cranham and JOHN SHORTER, who have died recently.

## Babies

Congratulations to Dr NINA LA HEI and Dr IAN CRABB on the birth of their daughter, Rosanna Elise, on 2nd May, a first grandchild for Nina's parents, Luke and Ellie, who live in Rose Cottage, Vicarage Street;

also to ANDY and ELOISE COULSON on the birth of their son, Harvey Christopher Patrick, on 5th June, a first grandchild for David and Helen Patrick;

and to JANET and JOHN TOWERS of Beacon Stone, Beacon Close, on the birth of their first son, Thomas John, on 13th June, a brother for Kathryn and Emily.

## Pearl, Coral, Gold and Diamond...

Congratulations to ANN and CALVIN GAIGER who celebrate thirty years of marriage on 25th July;

and to BOB and MARG SHEA on reaching their 35th wedding anniversary on 26th June;

Congratulations to PHYL and BILL VARAH whose fiftieth wedding anniversary will be on 29th July;

and to OLGA and DENYS HILL who celebrated their sixtieth wedding anniversary on 22nd June.

*Thank you letters are on an inside page*

## NEXT ISSUE

Publication Date  
**SATURDAY 5th AUGUST**

Items for publication to Jillie Speed\*,  
The Old Carriage House, Edge, by  
**SUNDAY 23rd JULY**

Mini Ads to Leslie Brotherton,  
Longhope, Blakewell Mead, by  
**SUNDAY 23rd JULY**

Business adverts: Contact Liz Fisher,  
Harebell Cottage, Blakewell Mead, by  
**THURSDAY 20th JULY**

Diary items (only) to Edwina Buttrey,  
14 The Croft, by  
**THURSDAY 27th JULY**

\* Articles for publication, and other items for the Beacon Committee, may also be placed in the **Beacon Post Box** in New Street (next to telephone kiosk).

Items for publication are welcomed on computer diskette (returned to you after use) or by e-mail to:  
[Painswick.Beacon@dial.pipex.com](mailto:Painswick.Beacon@dial.pipex.com)  
In all cases please give your name, address and phone number.

## BEACON COMMITTEE

Editor: Alan Bamber	814500
	(Beacon calls only)
Copy Editor: Jillie Speed	814148
Personal Column: Rachel Taylor	813402
Business Advertising: Liz Fisher	812130
Diary: Edwina Buttrey	812565
Sport: Terry Parker	812191
Distribution: Arthur Lock	813565
Treasurer: Leslie Brotherton	813101

## MICHAEL NYE

### Fine Woodworking

Beautiful furniture, kitchens, cupboards, doors, windows, boats, musical instruments ...

==YOUR IDEAS BECOME REALITY==

Tel. Edge 01452 814372

## DAVID ARCHARD

In association with  
Philip Ford & Son Ltd

**FUNERAL DIRECTORS**  
AN INDEPENDENT FAMILY BUSINESS

Private Chapels of Rest  
24 Hour Personal Service

DIRLETON HOUSE  
CAINSCROSS ROAD  
STROUD

01452-812103 or 01453-763592

## The Anthony Fisher Curtain Company

### SPECIALIST CURTAIN MAKER

A very personal advice and making service for simple drapes or elaborate window dressings. For an appointment to see thousands of fabrics, everything from Sandersons to Coloroll, in your home or my office/showroom at:  
41 Brunswick Road, Gloucester  
Please ring Glos 309333 (day) or Painswick 812130 (evenings).