

# The Painswick Beacon

Vol. 23 No. 2

May 2000

## TOP PUB AWARD FOR LOCAL BUSINESS

Johnny and Hilary Johnston, who run the Falcon Inn in Painswick and the Butcher's Arms in Sheepscombe, recently received one of the highest awards in the food and drink industry when their company 'Blenheim Inns' was named the outright national winner of the 'Pub Business of the Year' in the *Publican* magazine's awards for the year 2000.

Judging was carried out by over forty representatives of the industry, consumer associations and professional bodies; and they chose Blenheim Inns, which also includes the Royal Oak at Andoversford and the Carpenters Arms at Miserden, for "consistently restoring run-down village pubs into thriving businesses with sound structures and systems, offering the highest standards of food and drink together with exacting standards of customer service from highly trained and well motivated employees".

Johnny and Hilary received their award at a ceremony at the Grosvenor House Hotel in London on 28th March. Awards were presented by comedian Bob Monkhouse, and the proceedings were



*Johnny and Hilary receive their award from Bob Monkhouse (left) and Les Vigerstaff (right) - Managing Director of the competition sponsors, Satvision plc*

shown live on Sky television.

This outstanding achievement comes just a few months after their winning the Whitbread Partnerships Excellence Awards for businesses in the West of England, and they have also won a number of food awards and have been selected for membership of Cask Marque - the body which requires the highest standards of real ales in the country.

Johnny says they are keen to ensure that the traditional country pub never becomes a thing of the past and that they like to think they are doing their bit to

ensure it doesn't. "When we take on a public house we find out all we can about the building and its history and we try and restore as many of its original features as we can. All our pubs have their own individuality, but they all offer a traditional atmosphere and high quality food, drink and service."

In aiming for authenticity Johnny and Hilary spare no effort in searching the country for the appropriate furniture and fittings to create the right atmosphere, and they spend an equal amount of time and trouble choosing the right food and drink.

Paying tribute to their staff, Johnny says "all our staff are to be congratulated for their contribution to these achievements; their loyalty and excellence in their jobs is very much appreciated."

## The Guild comes to town

In an important and exciting development for the future of the Painswick Centre, and for the village generally, the Gloucestershire Guild of Craftsmen have announced that they are shortly to take up permanent residence at the Centre. The Guild's Co-ordinator, Penny Smith, has provided the following statement:

"Many Painswick residents will be familiar with summer exhibition staged at the Painswick Institute every year in August by The Gloucestershire Guild of Craftsmen. Some residents will have heard whispers or even spotted the activity in what was the Gardiner Room at the newly named Painswick Centre. Thank you to every one who has popped their

head round the door to wish us well! The very exciting news is that the Gloucestershire Guild is establishing a permanent office and gallery in the Centre.

There will be an official celebrity opening on Friday 26th May in the early evening, when we hope many of our friends in Painswick will come along to celebrate with us.

The Gloucestershire Guild was formed back in 1931 and has held its exhibitions almost continuously in Painswick ever since. Now, some 68 years on, the Guild still prides itself on high standards of craftsmanship and excellence of design.

CONTINUED ON PAGE 3

## ANNUAL PARISH MEETING

The Annual Parish Meeting will be held this year on Wednesday 24th May in the Town Hall, starting at 7.30pm.

This is a public meeting which is open to all residents. Reports are given by Parish, District and County Councillors, and residents have the opportunity to put questions to them and to make their views known on issues of concern to the community.



## Council Meeting on 19th April

Reported by Alan Bamber

### 'Care Village'

Chairman Terry Parker reported that the Council had received numerous letters expressing opinions on the Care Village application, mostly opposing it. He read out the latest batch of letters, of which one supported the application and ten were against. The Council did not discuss any of the letters.

### Travellers

The Council was told that the Painswick Beacon Conservation Group had written to the police drawing attention to the damage that travellers may be inflicting on the area and asking for assistance from the police. A reply from Inspector McGarry gave several reasons for police inaction: the Painswick manorship had initially allowed a group of travellers to camp on the land and had only changed its mind when a second group arrived and became difficult. Police powers were intended for immediate action, not several months after the event. Also the police saw this as a civil issue and not one that they could get involved with. Previous action on such requests had led to the police appearing in court and paying compensation to the travellers. Inspector McGarry said he had explained to Mr Blow that "his best course of action is via the Civil Court by way of an injunction enforceable by County Court Bailiffs".

Councillors heard that the Painswick Manorship was equally concerned about the cost of legal action and that Mr Blow had said "their entire annual funds could be wiped out by the court fees of two civil action cases. Councillors stressed the importance of Mr Blow taking immediate action in future. They noted that he

had declared his intention of sealing off parking places on the Beacon once the travellers had moved on, and this gave cause for concern because it could prevent motorists finding parking spots.

### Village Design Statement (VDS)

A letter from the Chairman of Painswick Conservation Society stated that at the Society's AGM he had raised the possibility of their being involved in the preparation of a Village Design Statement, following encouragement received from the Parish Council. The Society had voted unanimously to support the preparation of a VDS and several members of the Society had offered their services. They recognised the need to involve a wide section of the village community in the production of the VDS and the key role to be played by the Parish Council.

David Hudson said the Conservation Society had misrepresented the Council's response; they had not accepted the Society's case for producing a VDS but had merely said they wished to discuss the possibility. It was agreed to invite the Conservation Society to meet the Council's Blueprint Working Party to discuss the viability of the idea.

### Fire Service

Martin Slinger stressed the importance of attracting more members to Painswick's fire fighting service. He said that with two members moving away the force was seriously depleted. If fewer than four people are aboard the appliance, the Stroud service has to turn out to an incident in support. If this became the norm it could be argued that the Painswick station is redundant. This would be a serious blow, especially as the facilities at the Painswick station are so good.

### Youth Club

A letter from Painswick Rugby Club confirmed that they wished to surrender their lease on the recreation field pavilion and that they had carried out all the necessary remedial work on the building prior to the hand over. This being so, they asked the Council to regard the building as having now been released to them. The council thought this was a little premature, and that there should be a meeting with the Club to confirm that everything was acceptable prior to a formal hand-over of the lease.

The termination of the lease means that the Youth Club will in future rent the premises direct from the Parish Council. The Council agreed to Ann Daniels' suggestion that they should establish detailed "ground rules" with the Youth Club, clarifying who was responsible for what. Mrs Daniels also wondered whether the outdoor floodlights should be removed as they were expensive to run, but Terry

Parker thought they were a very useful facility enabling the club to pursue outdoor activities in the winter. It was agreed to try to monitor the cost of the lighting.

### Shared Traffic Warden?

David Hudson said there was a possibility of teaming up with two or three other parishes in order to meet the cost of a shared traffic warden. It was agreed to do some costings. An arrangement with Minchinhamton was seen as a possibility.

### Lychgate Corner

David Hudson resurrected the idea of putting up a barrier along the edge of the pavement at Lychgate Corner to protect pedestrians at that spot. Alternatively (or additionally), the pavement could be widened, with a priority system for traffic. Ann Daniels thought that a priority system would lead to a backlog of traffic in the non-priority direction and that if a barrier were placed right on the edge of the pavement it would allow the existing road width to be maintained. John Stephenson-Oliver suggested that the barrier start some distance from the corner so as to create a "funnel effect" encouraging pedestrians to get into single file before reaching the corner. It was agreed to explore these ideas further with the County Traffic Manager.

### Underground cables

Johnny Johnston said that Sheepscombe residents were looking into the possibility of moving cables underground, and as a first step they were trying to get BT and MEB to work together towards this. BT had responded that the village must have the backing of the Parish Council. Johnny Johnston thought underground cabling was a very good idea but the cost to individual residents was likely to be a crucial factor.

The Council agreed to back the idea in principle.

### Sheepscombe speed limit

The County Traffic Manager is to produce a "preliminary plan" for a 20mph speed limit in Sheepscombe.

**The GARDEN Co**

**TREE SURGERY**

- Mature Tree Maintenance
- Thinning, Pruning & Reducing
- Tree Removal & Chipping
- Hedge & Shrub Trimming
- Tree & Shrub Planting

Trained, Qualified & Highly Motivated Staff  
Free Consultation - Expert Advice - Fully Insured  
All Work Fully Guaranteed

Association of Professional Landscapers

**LANDSCAPE HOUSE**  
CHURCHDOWN, GLOS. GL3 1NX  
**01452 535165**

**APL**

**THE GARDEN PLAN**

Landscaping Patios Fencing  
Trees Borders General Maintenance

How does your garden grow?

FREE ESTIMATES  
GENERAL AND SPECIFIC PROJECT WORK

**Stuart Colley**  
Painswick  
Mobile: 07932 972675 Tel: 01452 814379  
stuart@upperwashwell.netscapeonline.co.uk



## The Guild comes to town, continued from page 1

Contemporary craft has rightly taken its place alongside other cultural industries in the mainstream of the British economy, and many of the current members of the Guild exhibit and sell their work widely throughout this country and abroad.

In these days of instant access, there is an ever-increasing demand for information about Guild members and their work. After deliberation over several years, the Guild has decided to develop from its "itinerant" status to a more visible and accessible position in the arts infrastructure of the country.

Alongside a permanent selling display showing the range of members' work available, we intend to establish an education programme of talks, demonstrations, and workshops based on the wide variety of skills available through members. The Gallery will certainly be open every day while the Summer Exhibition takes place in the main hall, and during the rest of the year opening times will vary according to the seasons.

Full details about the new Guild Gallery and contact details for the members are available from Penny Smith, Guild

Coordinator, The Gloucestershire Guild Gallery, The Painswick Centre, tel 01452 814745."

Discussions between the Guild and the Painswick Centre Management Committee have been ongoing over the past few months to bring about this arrangement, and the Chairman of the Management Committee, John Stephenson-Oliver, has now issued the following brief statement on behalf of the committee:

"We are delighted to welcome the Gloucestershire Guild of Craftsmen to the Painswick Centre and look forward to having them working alongside us as we move towards providing a community centre that we shall be proud of. We are hopeful that the improvements that we have been able to make to part of the Centre will also be complete by 26th May so that we can properly mark a step forward in the restoration of this valuable village facility. The next step, once funds are available, is to fully refurbish the Green Room so that we can make this available for services to the community and, thereafter, move on to the Hall to tackle the main, and most used, part of the Centre."

## One door closes... another opens



A new shop has opened in Painswick. Called 'Paraphernalia' Antique and Craft Centre, it is located in the former Mad Hatters shop in New Street. The opening comes just a few weeks after the closure of the previous Antiques and Craft Centre down the road in New Street, and an arrangement has been made for people who sold goods through the previous centre to continue to do so. Another connection is that Eileen Minchin, a member of staff at the old centre, is now serving customers at Paraphernalia. Our photo shows Eileen in her new surroundings. The shop is open every day, 10am to 5pm Monday to Saturday and 12 till 5 on Sundays and bank holidays.

The owner of Paraphernalia is Robert Cox, previous owner of the now-closed Bertrams Restaurant in Victoria Square. Robert says he is looking forward to meeting old friends in these different surroundings. Perhaps we should add that another feature of the merry-go-round is that Clive and Jenny Murray, who run the Murrays estate agency which replaced the restaurant, now live on the premises at St Michael's Cottage, and that Robert Cox has moved into the Murray's former home in Bisley Street!

## Is this your scene?

The Painswick Beacon is produced each month by a voluntary team of nine people. For the Beacon to move forwards, the committee feels that it is time to do some restructuring and to open its doors to fresh talent. We are asking, therefore, for anyone who feels they have a contribution to make, whether on the editorial or the technical/support side, to get in touch with us.

In particular we are looking for people with writing skills and an interest in local politics, sport, young people's activities or village events generally (perhaps with some knowledge of desk top publishing and computing). We are also looking to expand our accounting and general support teams.

If any of these areas are of interest, and you think you would enjoy being a part of our team, then please get in touch with Jillie Speed (address on back page) with details of your particular area of interest and the skills you can offer.

### Richard R Gittins Building Contractor

Stone Masonry Work : Extensions :  
Roofing & Maintenance Work

Tel: 01452-814475  
Reg. NHBC and DSWA  
Beechdene, Jacks Green,  
Sheepscombe

### PAINSWICK PAPERS

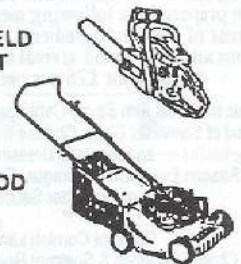
Have your  
newspapers  
magazines  
and comics  
delivered to your door



TEL. 814265

### LAWNMOWERS SERVICE • REPAIR • SALES

- HONDA
- MOUNTFIELD
- QUALCAST
- STIHL
- HAYTER
- ATCO
- FLYMO
- WESTWOOD
- KUBOTA
- COUNTAX



FREE LOCAL  
COLLECTION & DELIVERY

CHELTENHAM MOWER SERVICES  
MOBILE: 0831 282533  
TEL: 01452 714098

[www.users.globalnet.co.uk/~cmowers](http://www.users.globalnet.co.uk/~cmowers)



# Looking back on twelve years as our District Councillor

By Joan Nash

As I'm sure you are aware, I have decided not to stand for re-election as your District Councillor. I have enjoyed representing Painswick Ward for the past twelve years, and thank all those who have worked with me and supported me in that time. I feel that on any council, continuity must be balanced by fresh ideas coming forward, and I think twelve years have given me time to learn how the District Council functions, do some work, achieve some successes (and lose some) and now let someone else bring a fresh approach.

As well as looking after issues for Painswick and the surrounding villages of the Ward, I have taken a special interest in housing throughout the District. I have served on the Housing Committee for the whole twelve years, as Chairman for four years. It has been a pleasure to see both Council owned and private properties improved by grants and works carried out. I believe Stroud District Council houses are in as good, or better, condition as any in the country. Nearly all houses have central heating and double glazing and some have been completely rebuilt. A good number of new houses, for renting, have been built in partnership with housing associations.

Through my District Council work, I have become involved with Sanctuary Housing Association and I am now National Chairman of Sanctuary. We have 32,000 houses around Britain, from Dundee to Falmouth, including Stroud, comprising family houses, sheltered housing

for the elderly, student accommodation, flats for doctors and nurses, with nursing homes being a new venture. I shall continue with this voluntary work to provide affordable housing for those in housing need.

My interest in housing began twenty-five years ago as Trustee of the Gyde Almshouses, and I shall continue with that local need, together with work as a Trustee of Paradise House.

Serving as a Councillor is interesting and always varied. Who would have thought we would have to fight to stop development in our Painswick Valley? The Stroud District is so varied, with its AONB land and its small villages, as well as the bigger centres of Stroud, Stonehouse, Dursley and Wotton-Under-Edge. It has been a challenge to understand the differing needs across the District and to take part in making decisions for the whole District and each community. Our Councillors need wisdom and stamina and I wish the District Council well for the future.

I shall continue to take an active interest in local affairs and maybe I shall seek election as a "recycled Councillor" in the future. In the meantime I look forward to more time to see you all around the village.

## Local election

The Beacon went to print before Thursday's local government elections, so is unable to publish the results in this edition. In Painswick there was an election for one seat on Stroud District Council, the result of which may by now have been posted on parish notice boards. The seat was previously held by Joan Nash, who did not seek re-election.

## Dates of rubbish skips

Parish skip arrangements have been revised as follows:

Painswick, 5-8 May, Stamages car park. Edge, 8-11 September, Village Hall.

Sheepscombe, 29 September - 2 October, Village Hall car park.

Painswick, 20-23 October, Hyett Orchard. Slad, 17-20 November, car park site.

The Painswick sites were swapped because of expected road closures this weekend (5th - 8th May). It is understood that the revised arrangements stand, as above, even though the road works have been put back to later in May.

## Exhibition in Library Room

Leonard Stanley Art Workshop is holding an exhibition at Painswick Library Rooms from Sunday 28th May to Saturday 3rd June, 10am to 6pm; with a preview on 27th May, 2pm to 6pm. Admission is free.

## Don't shoot the messenger!

Last month's Beacon gave details of Severn Trent work to be carried out in the centre of Painswick, but after we had gone to print the date was changed. We do hope that residents were not inconvenienced by this. We had contacted the Parish Council, County Council and John Kennedy Engineering for the latest information, and could do nothing about the subsequent changes.

Latest information is that the work will take place over the period **19-22 May**. Most residents will have received a letter from Kennedy's explaining the changes to the date and the motoring restrictions that will apply. The Beacon contacted Kennedy's about the wording of the letter and they have responded that they did not intend to blame the Beacon and that they do not think their letter implied this.

## THE PAINSWICK HOTEL

KEMPS LANE, PAINSWICK, GLOS., GL6 6YB  
TEL: (01452) 812160 FAX: (01452) 814059  
WEBSITE: [www.painswickhotel.com](http://www.painswickhotel.com)

Our finale for May, join us on Friday 26th & Saturday 27th May for an 'Evening of the Best of British'. Kevin Barron and his excellent team have prepared the following menu to celebrate the best of British ingredients. Enjoy a glass of Pimms and canapes on arrival and this 3-course menu for £26 per person.

Mosaic of Rabbit with Savoy Cabbage and Madeira Jelly  
Salad of Somerset Goats Cheese with Garden Herbs and Avocado Dressing  
New Season Evesham Asparagus, Cracked Pepper and Lemon Butter Sauce

Rump of Cornish Lamb  
Champ Potatoes & Summer Root Vegetables  
Pave of Scottish Salmon with a Stew of West Coast Seafood  
Breast of Chicken, Roasted New Potatoes  
Ragout of Young Vegetables

Woodland Berry Soup with Vanilla Custard and Praline Biscuit  
Apple Turnovers, Bayleaf Custard & Cinnamon Ice Cream  
A Plate of Fine Local Cheeses with Rosemary Bread

**FROCESTER FAIRE**  
  
T.W.Hawkins & Sons  
Church Farm, Frocester,  
Stonehouse, Glos., GL10 3TJ.  
Tel/Fax 01453-822054  
**FARM FOOD AT FAIR PRICES**  
Our products include: all joints of pork - cut to your requirements, farmhouse pork sausages, home-cured bacon, home-cured gammon joints and steaks, homemade faggots in gravy, homemade assorted pies, real dripping, ½ pigs for freezer. All orders over £40 and within 15 miles can be delivered free of charge. Try some and 'taste the difference'.

## HOME 'n' DRY

### 'DRY CLEANS CARPETS'

**ABSOLUTELY NO DRYING TIME! - Guaranteed**

- Deep Clean and remove soil & spots
- Lift and rejuvenate carpet pile
- Leave your carpets with a clean fresh scent
- Benefit Asthma & Dust Allergy sufferers
- Leave your rooms ready for immediate use

**New 'DRY' Foam Upholstery Cleaning**

**For a free, no obligation quotation call 01452 612229 or 0370 437777**



## All's fair in love and coffee mornings?

On Saturday 8th April there were several coffee mornings in Painswick. Fund-raising efforts for charity may have been affected by the simultaneous events.

One organisation planned their event many weeks in advance and checked in the Village Diary (held in Painswick Woodcrafts) that there were no other events on that day, whereupon they entered their own event in the diary for the benefit of others checking later. They were understandably concerned when they later discovered that there were to be other similar activities on the same day.

It is therefore timely to remind all local organisations that the Village Diary exists to prevent duplications of this sort. Please take the trouble to check whether other events are already planned for the dates that you have in mind, and please remember to enter your events in the diary once the dates have been firmed up. There will of course always be clashes in a village where so much is going on, but constant use of the Diary may help to minimise them.

## Sponsored bike ride

I am again doing my 25 mile sponsored bike ride for Teckels Animal Shelter at Whitminster. I will have a sponsor form in Painswick Pharmacy. If you would like to sponsor me in this worthy cause I would be very grateful.

Many thanks to all of you who supported me in the past.

George Hodder

## Parish Council correspondence

The Parish Clerk, Peter Grant, has written to point out that all correspondence for the Parish Council should be addressed to 'The clerk, Town Hall, Victoria Square, Painswick, GL6 6QA'. It should not be sent to the Clerk's home address where the mail arrives after he has left for the Town Hall office.

### FREE DELIVERY TO YOUR DOOR WITHIN 24 HOURS:

- \* HEAVY DUTY BLACK REFUSE SACKS, £15 per box of 200, incl. VAT
- \* SWING BIN LINERS - ROLLS OF 15, £10.25 for 10 rolls incl. VAT
- \* PEDAL BIN LINERS - ROLLS of 30, £4.25 for 5 rolls incl. VAT
- \* BUILDERS RUBBLE BAGS, £29.50 per pack of 100 incl. VAT

ALSO CARRIER BAGS (PLAIN & PRINTED), POLYTHENE SHEETING, BUILDING & AGRICULTURAL POLYTHENE.

MOVING HOUSE? BUBBLE WRAP, 'FRAGILE TAPE', VAN ALSO AVAILABLE FOR LIGHT REMOVALS & RUBBISH CLEARANCE

filmstar (01452) 812182

# PLANNING APPLICATIONS

### Applications

- Croft House, Gloucester Street. Rebuilding and re-roofing of conservatory and rebuilding and reforming workshop.
- Holcombe Folly. Erection of tennis court.
- Sheepscombe Village Hall. Erection of rear extension and alterations.
- Cotswold Villa, Gloucester Street. Removal of retaining wall and waste soil to create off-road parking. Demolition of outhouse. Replace iron railings to front of property.
- Copse Cottage, Jack's Green. Renewal of permission for erection of double garage, single storey link extension and single storey extension forming dining room and utility.
- Lyndhurst, Blakewell Mead. Erection of 2-storey rear extension.
- Salt Box, The Camp. Retrospective application for erection of a roundhouse and hut.
- Bayliss Cottage, Sheepscombe. Erection of swimming pool and changing rooms.
- Briarfield, Stroud Road. Alterations and extensions to dwelling.
- Damsells Mill Cottage, The Park. Erection of conservatory and alterations to roof on lean-to.
- The Anchorage, Cheltenham Road. Erection of extension.
- 1 Hyett Close. Erection of extension and alterations to dwelling.

### Revised Plans

- 2 Upper Washwell. Detached garage with new access onto Upper Washwell. Main changes: Revision to materials and design.

### Consent

- Farmyard adjacent to Painswick Lodge, near Sheepscombe. Alterations, extensions and associated works to barns and other former agricultural buildings to form 4 dwellings. Alterations to existing cottage. Demolition of former agricultural buildings.
- Castle Lodge, Cheltenham Road. Erection of replacement store building & retention of stable block following permission S5969/Y.
- Cardynham House, The Cross. Variation of condition (b) of permission S7567/B to state that "No trade or business shall be carried out from the cafe/dining facility at 1 & 2 Tibbiwell Street before 7.00 weekdays or 8.00 weekends, nor after 23.30 hours."
- The Pool House, Bunnage Fields Farm, The Camp. Change of use of land to stud farm.
- Forty Acres, Wick Street. Erection of sectional boarding cattery.
- Beech Corner, Beech Lane. Extension.
- Greenhouse Lawn, Cheltenham Road. Erection of conservatory.
- Millpool House, Kingsmill Lane. Remedial pruning of two oak trees.
- Washbrook Mill, Edge Lane. Alterations and extension to dwelling.
- Hilworth Cottage, Gloucester Street. Internal alterations to fit new staircases to serve

attic bedrooms, shower rooms, means of escape.

- Highbury, Cheltenham Road. Erection of single storey extension.
- Tamarin, Bulls Cross. Erection of single storey extension.
- Tullyfield, Longridge. Erection of 2-storey extensions to dwelling.
- Norbreck House, Cotswold Mead. 2 storey extension.
- Painswick Antique and Craft Centre, New Street. Change of use from A1 (retail) to A2 (offices).
- Silvercrest, Kingsmill Lane. Erection of glazed entrance way.

### Plans Withdrawn

- Catbrain Quarry. Application for certificate of Lawfulness for continued use of land and buildings for storage of reclaimed building materials. Use of buildings for storage retail display and workshop. Use of building as a blacksmith/engineering workshop.
- Hale Cottage, Hale Lane. Part change of use from dwelling to bed and breakfast accommodation.

## MP's surgeries

David Drew MP will be holding advice surgeries in Stroud at the times listed below. All surgeries are by appointment. Please telephone Sarah Madley on 01453 764355. The Office is open 10am to noon but an answerphone message may be left. Appointments are for ten minutes and those attending are asked to provide a summary of the issue they wish to discuss. (Surgeries are also held in Dursley and Cam; contact the office for details)

Friday 12 May 5.30pm, Friday 26 May 5.30pm, Friday 2 June 5.30pm, Saturday 24 June 10am, Friday 30 June 5.30pm, Friday 14 July 6pm, Saturday 22 July 10am, Friday 11 August 6pm, Saturday 19 August 10am.

## PAINSWICK OSTEOPATHS

Paul Stamp DO  
Helen Froggatt DO

BUPA



PPP Registered Osteopath

Painswick Doctors' Practice

01452 301748

Parking and evening appointments available

### A.J. BULLINGHAM LANDSCAPE & GARDEN SPECIALIST

All aspects of garden work undertaken

- Ponds • Patios
- Brickwork
- Dry Stone Walling
- Turfing • Plating
- Fencing
- Tree Surgery

**01452 813155**  
**Mobile 0374 460139**  
3 Upper Washwell,  
Painswick, GL6 6QY



## LETTERS TO THE EDITOR

The Beacon welcomes letters from readers on subjects of local interest. Short letters are more likely to be included. Long letters will be summarised or edited, as will those containing comments that the Beacon considers unsuitable for publication.

### Trig Point on the Beacon

I was astonished to see in your notes on the Parish Council Meeting that English Nature is planning to remove the geodesic survey marker from Painswick Beacon. At first reading I thought that perhaps I had misunderstood the report or that maybe it was written on 1st April!

Assuming that English Nature has the authority to do this, I do sincerely beg them to reconsider. It may only be half a century old but for many people, the trig point is the Beacon. That little triangle on the OS map is not just the hill but the very summit; identified by the trig point marker. It would be meaningless to place it anywhere else.

That it is no longer needed for its original purpose is probably true but the same could be said of many other historic structures. The Village Stocks for example, which might have been dismantled when that particular sort of punishment went out of fashion (in fact many were) or the horse trough, or how about Stonehenge!

Walkers and visitors will always climb the hill and walk along the ridge and there will be some erosion and that is not going to change with the removal of the marker. If it continues at the same rate as we have seen over the last couple of decades, I don't think we have much to worry about.

Ken Lyons, Cheltenham Road

### Care Village

Apologies for writing again this month, but my letter in April's Beacon needs some clarification. I quoted Mr Keith Cockell, the potential developer, as saying that the "proposed Care Village scheme would involve care costs that Social Services could not support and

therefore the scheme would only be available to people of private means."

I was referring to the overall plan whereas Mr Cockell has subsequently pointed out to me that his proposal makes a number of beds in the nursing home available for DSS funding.

Tony Crook, Queens Mead, Painswick

### *A response by Richmond Village Care Centre to recent letters in the Beacon:*

I would be pleased if you would publish the following comments on various letters printed in the last edition.

#### David and Hilary Simpson's letter:

There will be a planning condition giving priority to people living in Painswick. This is a well proven formula, often applied to address these concerns.

Tony Crook: The Care Centre will provide residential and nursing care for those villagers that are eligible to be funded by Social Services. This will include the provision of bedrooms in the Care Centre, daycare facilities and domiciliary care provided to the whole village of Painswick. I have also now agreed to provide ten affordable apartments that will specifically meet the needs of elderly residents of Painswick that would benefit from a 'close care' environment but would rely upon housing benefit and the new 'direct payments' from Social Services, for their care needs.

In the last few days I have had several letters from residents opposing this scheme. In all cases they appear misinformed as to the scale and content of the revised application. I am taking the time and trouble to write to each one of them offering to meet them to outline the key factors regarding the development. I do hope they all will be open minded enough to do so, and take into account the wider needs of the many elderly residents of their village.

May I also take this opportunity to extend the invitation of transport to Nantwich for any elderly resident living in Painswick that would like to see for themselves the facilities in the Care Centre and meet residents here that are also funded by the County Council Social Services Department or the Health Authority.

Keith Cockell, Managing Director

### Advertising in the Beacon

#### *From Murrays Estate Agents:*

Dear Sir

As I write to you it is now six months since we opened our office at St Michaels Cottage and I felt it an appropriate time to express our thanks to so many who have made us welcome and of course to those who have supported us by giving us their properties to sell.

It is also now six months since we

started advertising in The Beacon, I believe a very important means of reaching your readers. There must be few publications that have such an excellent local circulation.

However, your readers have yet to see a Murrays property report!

We have been very keen to put one in but it is simply because of the limited advertising space available in the Beacon and as a result for the moment we are just not able to provide one.

Most of your readers I am sure know that the present property report is a paid advertisement which mentions some of the new properties coming onto the market and changing hands in the village.

Now that there are two agents in the village, this report only represents part of the picture. I believe your readers should be entitled to a more complete view of what is going on with local properties and I feel that my firm has an obligation to help provide this. It would also be a chance to tell your readers how well we are doing.

Obviously I hope that the Beacon will accept a property report from us soon. We are very happy to pay for the additional space but there is possibly another option which I would like to suggest. Could the property report not become a regular part of the editorial content of the paper with both agents contributing? In this way your readers could see the whole picture and you as editor would have greater control. This would create a more level playing field between the agents, although our prominent location is greatly to our advantage.

Since opening, Murrays' Painswick office have received instructions on 44 properties, 16 of which have completed or exchanged with 9 more under offer. This has reduced our stocks and we have hundreds of buyers just waiting for the right properties to come onto the market.

As you know Jenny and I have purchased St Michaels Cottage, not only as a business, but as our home, our fourth home in the village since moving here in 1982 when I was a partner with Lear & Lear.

You will appreciate that we are committed to making our business here a success and our relationship with the Beacon is to us a very important factor in achieving that success. I look forward to yours and perhaps your readers response.

Clive Murray

#### *A response from the Beacon:*

The Beacon understands and is sympathetic to Mr Murray's concerns. The difficulty, as he acknowledges, is that the Property Report in the Diary section is an advertisement, and we have limited space for adverts. Being non-commercial we

CONTINUED NEXT PAGE

### Sheree Carver

Therapeutic and Indian Head  
Massage, Aromatherapy,  
Beauty Therapy (Wedding  
Make-up, Self Tanning  
Treatments, Pedicure, Waxing)

Professional, quality treatments;  
A mobile service is offered or  
escape distraction and come to  
my treatment room

Gift Vouchers available

Telephone 01452 812922



wish to make the Beacon as readable as possible and we therefore restrict advertising to 20% of the overall space. We currently have a waiting list of advertisers who can only be accommodated if we go up to larger sized issues, and this is not always a practical solution for reasons of time and other considerations.

One possibility is to alternate monthly between advertisers, but three points should be noted. Firstly, it is arguable whether the space in the Diary section should be treated differently from our other pages, where there are several examples of advertisers in a particular line of business being denied regular space even though their competitors have a monthly slot. Secondly, there can be no question of changing policy mid-year. Our regular advertisers have paid in advance for up to twelve inserts in a series, and we cannot break those contracts. And finally, the existing Property Report is a longstanding arrangement for which the advertiser pays a significant sum. There is only room for one such advertisement, and Hamptons came to us first.

We review our advertising policy in January every year with a view to making arrangements for the following financial year. This subject will therefore be looked at again next year.

Mr Murray's proposal that we run a property report as an editorial item rather than an advertisement is an interesting one. We agree that this concept would alter the ground-rules, because fairness would be paramount, whereas advertising must largely operate on a 'first-come first-served' basis. However, we would need to be convinced that such an item is of general and regular interest to readers, warranting the space that it would take up. It is not difficult to think of alternative areas of the local consumer market that might be of equal or more interest to readers.

Finally we wish to assure Mr Murray and readers that we do not take these decisions lightly. We have exchanged several letters with Mr Murray on this subject, and recently visited him and Mrs Murray to discuss it further. We wish them and all our advertisers well, especially as they have made such a vital contribution to the Beacon's well-being over the years.

# Painswick Valley Group AGM

Painswick Valley Group held its Third Annual General Meeting at Painswick Town Hall on Thursday 23rd March.

Chairman Barbara Tait, reporting on the Group's activities during the last twelve months, noted that the Gloucestershire County Council Structure Plan had now been adopted but that the Stroud District Local Plan had only just passed the Deposit stage and we were waiting to see how the Planning Department reacted to the many submissions that had been made. In particular she was aware that a builder's agent had urged the Council to allocate Grange Fields for development even though it was in the Cotswolds Area of Outstanding Natural Beauty. This would have to be resisted right up to the Local Public Inquiry if necessary.

Frank Cronin (President), Barbara Tait (Chairman) and Carolyn Luke (Vice

Chairman) were all re-elected for a further year together with Executive Committee members John Courts, Gordon and Irene Hopwood, Michael Little (Secretary), Marion Matthews (Treasurer), Mavis Mandel and Liz McMeekan.

There followed a lively discussion about the Group's attitude to the application by Richmond Health Care for planning consent for a nursing home and related accommodation north of Cotswold Mead. It was agreed that:

- a. the Group should continue to oppose major development on green field sites in the AONB;
- b. if there was a proven need for a nursing home in Painswick then this site was probably the only potential site, subject to the density being acceptable;
- c. the size of any proposed development should be very carefully monitored.

## Painswick AONB Group

A new group, 'Painswick AONB Group', has been formed to fight the proposals for a 'Care Village' in Painswick. In a press release the Group states that the development would "expand the village envelope and create a major building programme

in the Area of Outstanding Natural Beauty" and they claim that the Parish Council has supported the outline application despite protests from residents. At a recent Group meeting the Secretary Carole Ross stated:

"The developer has changed the scope and scale of the proposal to try and gain support for a development which is against planning guidelines for the AONB. The building of a nursing home with more than 30 beds and a further 40 housing units is a development totally out of scale with the existing village and its infrastructure." The Group is supporting the Stroud District Plan, which indicates a need for approximately ten affordable housing units in the same location. "There has always been small scale development in the AONB and the Group recognises the need for affordable housing to meet the sustainable needs of the village."

The Painswick Group say they are in contact with other AONB action groups, the Countryside Commission and the CPRE. They will be seeking an urgent meeting with Stroud District Planning Officers to confirm that the planning application is contrary to the Gloucester County Structure Plan and is not supported by the Council. Public meetings in Painswick to oppose the development are planned.

## Care Village latest

The District Council has not yet fixed a date for considering the outline application for a 'Care Village'. It will definitely not be brought before the May meeting of the Council's Planning Committee and is doubtful for June. A report by the County Council on site access and highways implications has not yet been received; this is required before a decision on the application may be made.

In view of comments about the size and density of the proposed development, it may be useful to re-state the current nature of the application. Richmond Healthcare submitted revised information in March, stating that the only plans that form a part of the application are a site location plan, a "landscape and development framework plan" (showing 'zones' on the field where development is and is not intended) and plans showing site access (to be submitted). They state that none of the previously submitted plans form part of the application and that those plans are "to be treated as illustrative material which shows the typical design approach which the applicant would wish to follow". The applicant has since amended the application to include the provision of ten units of affordable housing. Full details of the number of units and their siting and design, and so on, will be required in any subsequent detailed application.

### Ironing Services

Let me take all that hard ironing away from you.

Excellent references

Telephone Mrs Turner

(01452) 715178

Mobile 07939 427151

**SATISFACTION GUARANTEED**



**A. J. FERN**  
**CARPENTER-JOINER**

and

**General Building Services**

**Telephone: Stroud 750105**



## Gold and Diamond celebrations

Several Painswick couples have celebrated golden or diamond wedding anniversaries over the past few months.

Pictured right are Marion and Peter Sadler, who celebrated their fiftieth wedding anniversary on 1st April. They have lived in Painswick for 28 years, coming here from Radlett in Hertfordshire when Peter was one of the many CEGB employees who settled in Painswick when the company relocated to Gloucester in the early 70s. They were previously much-travelled, including a period in Scotland. Marion and Peter have four children - Bridget, Ian, Kevin and Philip - and seven grandchildren. (Readers will recall that Ian took the Painswick New Year's Day photograph in the churchyard). Marion and Peter are well-known in the village for their tireless efforts on behalf of the Mencap Homes Foundation.

They celebrated the occasion with a big family gathering at home.



Pictured below are Bert and Queenie Grant, who celebrated their sixtieth wedding anniversary on 6th April. If anyone can claim to be a true Painswickian it is Queenie! Not only was she born in Painswick (at Rozel Cottage opposite the stocks) and lived here all her life, but her mother and father were both born in the village, as were her two grandfathers! Bert can't quite match that but he is very much a local, having been born in Thrupp and lived and worked in Gloucestershire all his life - apart from his time in the forces during the war. (He received his call-up papers on their wedding day, but managed to delay the goodbyes for a few days).

Bert and Queenie met at the Bear Hotel, Rodborough, where Queenie was working at the time. Later, as many people know, Queenie worked for nearly twenty-two years at the Croft School. She has many fond memories of the staff and pupils there.

Bert and Queenie held 'open house' on 6th April, and followed this up with a party for family and friends at the Falcon. They were thrilled to receive a congratulatory anniversary card from Her Majesty the Queen.

Queenie is an avid collector and the house is brim full of teddy bears (some 175!), miniature brasses and fridge magnets.



### These foolish things...

Contrary to some impressions, there was only one April fool piece in last month's Beacon. A few readers seem to have had trouble spotting it from among several likely contenders!

On the subject of last month's Beacon, we understand that four Painswick B&Bs have so far made enquiries about the special EU grant available to those providing accommodation during next year's European Festival Week.



## RESTHAVEN

Resthaven, Pitchcombe, Nr Stroud,  
Gloucestershire GL6 6LS.

Telephone: Painswick (01452) 812682

RESIDENTIAL/NURSING HOME  
SHORT & LONG TERM &  
RESPITE CARE  
SINGLE ROOMS  
PRIVATE CHAPEL  
BEAUTIFUL SETTING OVERLOOKING  
THE PAINSWICK VALLEY

Resthaven Home of Healing Ltd  
Regd. Charity No. 235354

## ash Dzine

FULL ARCHITECTURAL SERVICE for Self-build  
Homes; Conversions; Extensions; Renovations;  
Small Commercial and Farmsteads.

Promoting energy efficient  
and environmentally-  
friendly design as per  
client approval

Traditional &  
contemporary  
approaches welcome

tel. (01452) 812810 mobile. 07957 682 062  
e-mail angela@ashdzine.freereserve.co.uk

## Cornerstones Chauffeur Service

Available 24 hours a day for  
airports, theatres, London,  
Licensed Mercedes or well  
turned-out cars

Tel: 01452 770337 Fax: 770987  
Mobile: 07802 154968



## Painswick's senior golfers survive the winter

Contrary to some rumours the senior golfers (over 55 years young) do not hibernate for the winter but have completed a number of events, thankfully only rarely interrupted by the weather.

The Winter Fourball, a new event initiated this year, was Stableford format held over ten mornings with the team aggregating the best eight scores as the winners. Norman Pullen and Rodger Anthony were the winners, John Webb and Derek Haydon second and Ralph Griffiths and Ken Morris were third. Jim Eva and Malcolm Booth had the best score for all ten rounds and won that prize. Despite some misgivings the format devised by competition secretary Ian Smethurst was judged a success in getting numbers out

on prescribed mornings while allowing for absences for unforeseen reasons.

The Eclectic Competition allowed us twelve cards to achieve our best score at each hole without benefit of handicap but with prizes for different handicap groups. John Webb, off 11, won overall with a total of 53 strokes, probably the best ever achieved in this competition. Other winners were: Handicaps 10-14: John Weston with 56 scored, handicaps 15-16: Jim Hodge with 60 strokes, handicaps 17-19: Malcolm Booth with 63, and handicaps 22-28: Tony Peasley with 64 strokes. John Bright, the organiser and score keeper, decides the categories for prizes to achieve a fair prize distribution but it is noticeable how over twelve rounds handicaps are reflected in the cumulative scores.

The March Medal was won by Tony

Peasley with a net 57 so that he has achieved a double ambition with a substantial handicap cut! Ralph Griffiths (net 59) and David Walker (net 65), were second and third. The April Medal was won by Jack (new hip) May with a net 64, beating David Warren on countback and Geof Davis third with net 67.

With the typical perversity of our marvellous climate the first match of the Seniors' season was called off after nine holes due to the greens flooding at Cotswold Hills. The Captains declared a halved match to save us from drowning!

We are looking forward to a full season of competitions, matches and Seniors' Opens with a number of new members. Anyone out there looking for exercise could do worse than share the friendly golf fellowship with Painswick Seniors.

Jim Hodge, 812573

## Damp start for cricket

(Now there's a surprise!)

After the first Saturday of the new league season (29th April) was washed out, Painswick had been looking forward to playing in the first round of the Village Championship on the following day. There was, therefore, an understandable feeling of frustration when opponents Wickwar had to cancel and award Painswick a walkover. Painswick will be at home in the second round of the Championship on Sunday 14th May.

Fixtures (All Saturday matches are league games),

Sat 6 May. 1st XI v Old Richians 1st XI (Home). 2nd XI v Shurdington 2nd XI (Away).

Sun 7 May. Gloucester Arcadians (Home).

Sat 13 May. 1st XI v Birdlip 1st XI (Home). 2nd XI v Birdlip 2nd XI (Away).

Sat 20 May. 1st XI v Cheltenham Extras. 2nd XI v Aston Ingham 2nd XI (Home).

Sun 21 May. Kings Stanley (Home).

Sat 27 May. 1st XI v Frampton on Severn 1st XI (Home). 2nd XI v Cheltenham Civil Service 2nd XI (Away).

## Good cup run makes up for moderate league season

The local rugby season has ended and Painswick RFC's thoughts are already focusing on September when the 2000/2001 season will commence. 1999/2000 brought mixed performances with another excellent cup run but an indifferent league season with the first fifteen just managing to retain Division One status. However, the season concluded on a high note when, playing for the Simon Tirley Cup, the first fifteen defeated Stroud Nomads by 16 points to 15. Painswick's third fifteen had

a convincing victory over Minety in the Bill Adams Trophy semi-final but were unable to overcome new club Fairford in the final.

### Rugby Results

Wed 29 Mar. Painswick XV 74 Gloucestershire Police XV 12.

Sat 1 Apr. Painswick XV 53 Drybrook XV 7. Bill Adams Trophy. Minety 2nd XV 8 Painswick Adders 13.

Sat 8 Apr. Tetbury 1st XV 33 Painswick 1st XV 27.

Sat 22 Apr. Painswick 1st XV 16 Stroud Nomads 15.

## TODAY is 'Play Tennis' Day

### Broadham, Saturday 6th May

As part of the National Play Tennis Week, Painswick Tennis Club is holding a play tennis morning TODAY, 6th May. This is a fun morning with games and prizes. No need to be a member and no charge.

Sessions at Broadham are:-

9.30am - 10.30am, up to age 9

10.30am - 11.30am, age 9 upwards

Please attend the appropriate session. More details from Hugh Tarran on 814081.

Also, for any under 10, why not enter the Robinson's Challenges at Broadham on Wednesday 31st May (pm) and Sunday 9th July (pm)? For details, please telephone Christine Rivers on 01242 252098.

## Painswick tennis seniors' success

Painswick Men had a fine victory over Exeter in the first round of the Over-60s national tournament at the Recreation Ground courts on Thursday 6th April. Playing for Painswick were Peter Bolton/Terry Parker and Bob Sivyer/Bill Lambell. Painswick won by three rubbers to one. Sadly, because of holiday commitments, it has not been possible to find a mutually convenient date on which to play Haverfordwest in the next round and Painswick have been forced to concede.

## London Marathon

Congratulations to Jonathan Unwin on completing the London Marathon on 16th April. Jon raised money for the Foundation for the Study of Infant Deaths (FSID). He doesn't yet know the total raised.

**BACKACHE? ... STIFF JOINTS? ... HEADACHES? ... ASTHMA? ... ME/CF? ... SPORTS OR WORK INJURY? ...**

**TIM WILLCOCKS** now visits regularly from Malvern and welcomes requests for Home Visits: **REFLEXOLOGY** and **BOWEN TECHNIQUE** (Over 85% of clients reported improvement in 1999)

**Tel: 01684-541606**



# 100 years ago - Painswick celebrates Mafeking

The Painswick Gas Works were fast approaching completion, having been reconstructed. Extended mains were being laid to Messrs Savoury & Co at Brook House Mills.

An inspection of the structure supporting the Church bells gave distinct evidence of the necessity to re-hang the famous peal. Joints had to be wedged and stays fixed to prevent oscillation. Also the bells required to be quarter-tuned to prevent cracking. The churchwardens had the matter in hand and a bazaar had been arranged to raise money to defray cost of repairs. It was not generally known that the tenor bell was inscribed with the following fitting couplet:

"I to the Church the living call,  
and to the grave I summon all."

Other bells bore the name of the maker and church officials at the time the peal was first instituted. The clock was a further object of interest in the tower. It was

## Cattery to open in Wick Street

A new, purpose-built cattery is soon to open in Wick Street. Janet Horner, who moved to the area last November has, with guidance from the Feline Advisory Bureau, designed and built the boarding accommodation which will be open to its first visitors in June. There are twelve chalets each with their own indoor heated area and separate run. Two of the chalets will provide 'family' living space for up to four cats. Janet, who is fully trained in cattery management, will be taking bookings from mid May and can be contacted on 01453 752006.



### ST. VINCENT'S NURSING AGENCY

26 Vincent Avenue,  
Tuffley  
Gloucester. GL4 0SW

PROVIDING A QUALITY  
HOME CARE SERVICE  
WITHIN THE  
GLOUCESTER DISTRICT  
AREA

Providers of:- Personal Care  
- Domestic Help  
- Shopping  
- etc

TEL. (01452) 415066

wound once a day and kept fairly good time. At one period the vibration of the bells caused the works to vary; but a patent had been introduced which counteracted any effect of the vibration. The work was carried out by a Painswick blacksmith.

Measles was prevalent amongst the children of the town. At the School Board meeting, Mr A Bailey (attendance officer) said that Painswick Infants school had been closed on the previous Friday for a fortnight. There were nearly 40 boys away from the Boys' school. The Chairman, Mr E T Poulton, said that this would interfere with their average attendance and consequently cost money. Nevertheless the Chairman proposed that the school be closed for a week or two. Slad school had been closed for three weeks. The Inspector's reports on the Painswick schools were also reviewed. The Boys school was found to be "pleasantly and efficiently conducted" and "discipline and tone excellent". The Girls school had improved throughout the year. Shepscombe (sic) was "fairly successful but paper work could improve".

On the 19th the welcome tidings of the relief of Mafeking and the heroic deeds of Col Baden Powell were brought to Painswick by two cyclists from Cheltenham. Without delay guns were fired,

and flags hoisted from nearly every house in the town. In the afternoon Painswick Brass Band paraded the streets and played patriotic selections under the direction of Mr W West. In front was exhibited a large banner inscribed with what was described as the Painswick 'coat of arms'. On a dark ground was painted notably the cock and the historic dog with the words in great prominence "Bow-wow", the work of a local artist. Cannons were fired by Capt Burdock, as chief artillery, being willingly assisted by local residents. Everything was done spontaneously by the inhabitants. Mr James Powell, artillery pensioner, was attired in his military uniform and Mr Frank Swayne, an ex-militia man with a bandage round his head and his arm, represented the well known figure of 'The Absent-minded Beggar'. The flag of St George was flown from the battlements of the Church tower, and Mr Hyett displayed a national emblem from the flagstaff at Painswick House. On the following Sunday the National Anthem was sung before the commencement of all services. It was suggested that the author of the banner should be generous enough to present it to the town. It might be that in return for his inventive genius he would receive "the freedom of the city" at the hands of the local 'Mayor'.

John Bailey

## News from Painswick Playgroup

First of all we would like to pass on a big thank you to all those who helped in so many ways with the Coffee Morning held on behalf of the Painswick Playgroup at the Town Hall at the end of March. Thank you to those who helped on the day, to those who provided items for the stalls and to those who attended (including a large contingent of Painswick Puffins) and bought raffle tickets.

We are delighted to report that the Coffee Morning, together with associated donations, raised a total of £255 in aid of Playgroup funds.

Meanwhile, at Playgroup itself the children have continued to enjoy their activities around the theme of numbers

and also produced some lovely cards and gifts to celebrate Mothers' Day. More recently, in the lead up to Easter, the children have made Easter cards and chocolate nests filled with Easter eggs.

The Playgroup is now looking forward to the Summer term with a virtually full house but has vacancies for September. If any of you would like your child to start at Playgroup in September, why not visit Playgroup on any weekday morning at the Playgroup building next to the Croft School and pick up a registration form. Alternatively contact Beaty Bell between 8.30am and 12.30pm on her mobile, 0961 528879 (during term-time), or at home on Gloucester 610997.

### Michael Davis Building and Maintenance Contractor

Painswick 01452 812598

Mobile 0589 092279

e-mail: Mike@swtennis19.demon.co.uk

ALL types of building work carried out.  
Natural Stonework and Dry Stone  
Walling a speciality

Lived and worked locally for over 30 years  
Member of the Guild of Master Craftsmen

Garages and All Building Maintenance  
Natural Stonework a Speciality



Extensions

### HORNE & KILMISTER General Builders

For Free Estimates phone  
Painswick 812760  
and 01453-872329



# 'Thank you, Painswick'

*Former Cub Leader Colin Badger describes a surprising evening at the Croft School*

This evening (24th March) I innocently set out on a labour of love to assist at a Cub pack meeting as I had promised Rob Goddard a few weeks ago. The fact that he had not contacted me to prime me for my duties did not concern me. After all I had been connected with the Cubs for some 16+ years and thought that whatever he threw my way I should be able to manage. I knew that he had been in contact with Shirley and so I assumed that he knew that I had remembered; little did I know the real reason for the contact.

The meeting started well - not many changes since my recent retirement. One or two parental faces and even brother and sister types drifted in; my assumption was that they were along to see their progeny invested into the scouting movement, an event to attend and record with the camera. (The evidence can always be used in later life to amuse the friends and suitably embarrass your "cub" when in their late teens or early twenties) I talked to Alice - ex cub and scout. Alice has younger brothers, obviously she is along for the investiture to remind her of an earlier life, her attendance confirms my earlier assumption.

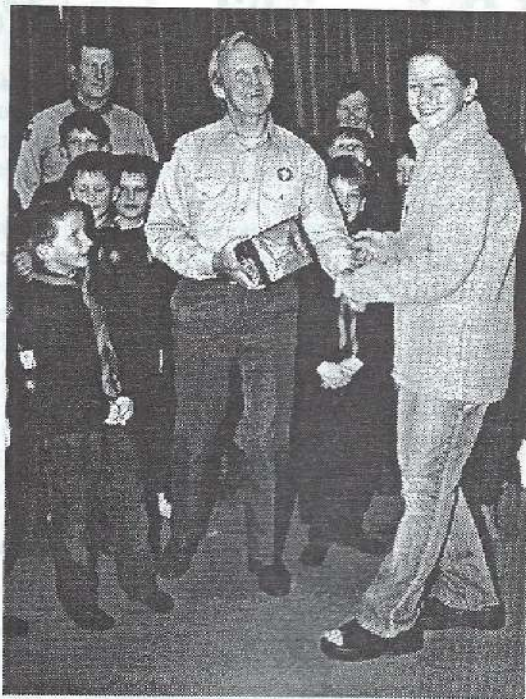
Then the Assistant District Commissioner and District Commissioner for the district turned up. No worries - they occasionally come along when a few members are to be invested.

The investiture ceremony started, there seemed to be too many parents to go round the number of new cubs being invested, maybe there were some friends who wanted to share in the ceremony.

Next Shirley walked in, thirty minutes early, not a problem; she was visiting a friend in Berry Close; the friend must have opted for an early night.

All of these were very logical explanations, to me at least. Then I noticed Nora MacAndrew had appeared on the scene; she has no cub age children, well not to my knowledge. The place was really filling up. Still absolutely no suspicions; the explanation to my normal enquiring mind was there must be a parents' event waiting to use the hall after the cub meeting. I was not far off the mark there!

The penny did not drop until Rob called for silence and then proceeded to destroy all of the logic and the assumptions that I had applied as the evening went on, by announcing; "As Colin is here, we have gathered people together...



*The cubs look on as Colin receives a present from former cub and scout Alice Unwin. Current leader Robert Goddard is at the back.*

etc, etc"... THEN it came clear in a flash, a little late. I HAD been set up. Hang on, that is my role in life, I do the setting up, I am not supposed to be the innocent party. Time to hang up my boots, I am obviously past it, got too old, too gullible.

BUT a really sincere THANK YOU to every one involved for organising the event, attending and presenting the rather swish set of crystal glass accessories, comprising well proportioned (read good capacity) spirit glasses and decanter. Many, many thanks for this, they will be treasured and could well come in for frequent use ensuring that memories of cubs, parents and Painswick will not be forgotten. It was very gratifying to see parents of recent and not so recent cubs, and hard to describe how very rewarding it was to see the ex-cubs and scouts who had taken time to come along and some I now know who wanted to attend but could not. Thank you very much, young adults, it really does mean a lot to me to have seen you and to find that you will still talk to me, now that you have a choice!

In retrospect I am pleased and elated that I was "had". Very many thanks to the perpetrators.

## Blue Peter Bring & Buy

There is a Bring and Buy Sale in aid of the Blue Peter New Life Appeal TODAY, Saturday 6th May, in the Town Hall from 10am until 1pm. Please come and support us.

Sharon Humphreys (814424),

Leanne Gamble (812578),

Nat Roberts (814251).

## Thank you from the Puffins

The Puffins would like to say thank you to everyone who made our coffee morning such a wonderful, friendly and successful event. The total sum raised was eight hundred pounds. Many non-Puffins joined us in our effort to raise money for equipment for The Oncology Department at Cheltenham General Hospital. The list of donations for the raffle, stalls and general support is too long to thank everyone individually; but you know who you are out there.

Our dear friend Val (Miles) managed to sign the cheque before she died, knowing that she was giving hope of speedier treatment for those who follow. Heartfelt thanks for your most generous support of time, money and goods.

Jenny and The Puffins

### PAINSWICK POST OFFICE

• **DON'T FORGET:**  
FIRST CLASS  
INLAND MAIL  
PRICES NOW  
START AT 27p.  
OVERSEAS MAIL  
PRICES HAVE ALSO INCREASED.  
CHECK WITH US FOR NEW RATES.



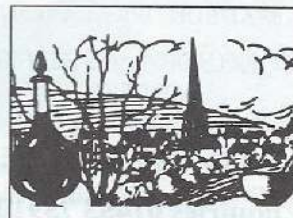
• TAX YOUR CAR WITH US AND HELP SAVE YOUR POST OFFICE.

• CHECK OUR RATES FOR FOREIGN CURRENCY AND TRAVEL INSURANCE. WE'RE VERY COMPETITIVE. WE CAN BUY BACK YOUR UNUSED CURRENCY AT NO CHARGE

PAINSWICK POST OFFICE tel. 812303

## THE PAINSWICK PHARMACY

NEW STREET. Tel. PAINSWICK (01452) 812263



### OPENING TIMES

MONDAY TO FRIDAY  
9.00 - 1.00 AND 2.00 - 6.00  
SATURDAY  
9.00 - 1.00



# Computing Club of Painswick?

Maybe. In response to the ideas included in the invitation in the last Beacon, fifteen people came along to the Painswick Centre last month to discuss what each might seek from a club with computing as its central interest. Eleven others were unable to meet that day, or want to be kept informed of developments; they have been.

A further meeting will be held on Tuesday 16th May, again at 3.00pm at the Centre. If you are in any way interested, do come along.

Several ideas were discussed, one of which seems likely to develop further. Almost all present already own or are soon to purchase a PC, and they felt that it would be very helpful if there were regular opportunities to meet and discuss aspects of home use of computers. Sharing experiences and how difficulties were resolved seems to be much sought after. Manuals and help-lines are useful, of course, but informal and quick resolution by contact with fellow mouse movers was seen as most desirable. Needless to say, actual meetings will have their place, but raising queries among ourselves through such means as email will also be helpful.

The idea of inviting an expert to give instruction was also mooted, the cost of which would need to be met by those requiring that particular level of expertise. There would be nothing to prevent such instruction being absolutely basic, or more advanced.

The idea of creating a Painswick equivalent of what is popularly known as a cyber-café was discussed, but the implications of costing and supervision such

a desirable project were such that it was not seen as practicable in the short term. However, investigations are being undertaken by David Ryland and others to see if there are funding sources which can be tapped. The venue was regarded as almost ideal, both for a computing centre itself and, for the time being, regular get-togethers of those who are into this technology.

If refreshments can be added, that was regarded as a bonus; the reverse idea, of there being light refreshments available at the Centre with a computing facility alongside, was also mooted. This appears to be a chicken-and-egg situation. Meanwhile, and to avoid yet another abbreviation of PC, or PCC, those present decided to reverse the letters and refer to themselves as the Computer Club of Painswick; CCP.

We will report upon developments as they come along, but are there others interested?

Leslie Brotherton

## Brooke Hospital

Thank you to everyone who helped and supported the recent sale held on behalf of the Brooke Hospital.

We raised £472.70 which, considering the fact that many people believed that Painswick would be closed to traffic and that two other sales were also taking place that morning, was very good indeed.

We have quite a lot of bits and pieces left and will be taking these to a few car boot sales as the weather improves.

Many thanks to you all and if you wish to donate any items for us to sell for the Brooke Hospital please call Michele Phillips or Jill Alder on 812340 or 813329.

## By the way...

All readers will know that the parish church of Painswick is St Mary's, but which saints are the parish churches in the following nearby villages named after: Randwick, Miserden, Edge, Birdlip, Cranham, Upton St Leonards?

Answers on page 22.

By 'Grumbler'

## P FOSTER

GENERAL BUILDER / CARPENTER

STONEMASONRY and REPAIRS

FENCING

BALCONIES

SMALL JOBS WELCOME

Enquiries 01453 759106

# POLICE REPORT

**Incidents: 14.03.00 - 10.04.00**

House Burglaries: Edge 1. Business Premises: Brookthorpe 1. Sheds: Nil. Vehicles: Cranham 6. Other: Slad 1 (theft).

## Items Stolen:

Briefcase, sunglasses, mobile telephone, radio/cassette (3), lap top computer and case, TV (2), video, hand tools, power tools, toolbox and contents, car parcel shelf, speakers (2).

## Reported Incidents:

Nine incidents were reported and two were of value to the police. Thank you.

## Security Improvement Recommendations:

The theft of items from unattended cars and sites continues to be the main area of crime. Many thefts could have been avoided if property had been removed to secure houses and garages. In one case last month the door was opened by the use of the key which was left on the inside of the door. We recommend that all door and window keys are hidden. At this time of year burglars are on the lookout for garden machinery and garden furniture. Make sure yours are put away in a secure place.

Police Team & Liaison Group Coordinator

## Weather-beaten

Last weekend's fine holiday weather gave April a couple of dry days to end with, but it won't have erased memories of one of the wettest Aprils on record. Hardly a day seemed to go by without heavy rainfall. Painswick also experienced two snowfalls, one on the 3rd and another on the evening of the 11th. This was noteworthy in itself, but all the more so because we had previously had only one snowfall to speak of in the whole winter. Some will see it as evidence that the seasons are increasingly out of kilter, with spring often coming late and winter seeming more like autumn.

The snowfall on 11th April was short-lived but it was wet, heavy snow which caused damage to trees in the village. Some of these have not recovered.

## Bastet Boarding Cattery

### Opening in June 2000

Proprietor - Janet Horner  
Feline Advisory Bureau Trained

Forty Acres, Wick Street  
Stroud

Tel: 01453 752006

Individually heated chalets with outdoor runs  
Bookings will be taken from 15th May

## THE PATCHWORK MOUSE

A VERITABLE ALADDIN'S CAVE

SILK FLOWERS ... GIFTS ... CARDS  
SOMETHING TO SUIT ALL AGE  
GROUPS AND HOPEFULLY ALL  
POCKETS!



WHY NOT CALL IN AND  
BROWSE - YOU WILL BE  
MOST WELCOME

DAWN MALLINSON  
813122

## PRICE DAVIS

Chartered Accountants & Registered Auditors

We offer a fast response and a  
personal service for all your  
taxation and accountancy problems

Contact Howard Davis on:

Painswick 812491

Mobile phone 0836 515701

Email sales@pricedavis.co.uk





Reg. Charity 281014

# williams

SYNDROME

1000 mile Bike Ride  
San Sebastian, Spain, to Edge

Join us for the final 16 miles, Cirencester to Edge Village Green where the Fete will be in full swing  
**Starting from Cirencester at 4pm  
Saturday 1st July**

Entrance fee £5 per person (or more!)

Further details from Mike or Valerie 813107

## Edge (Spanish) Millennium Fete

Saturday 1<sup>st</sup> July 2000 at 5pm

This year Edge Fete takes on a Spanish theme. Why a Spanish theme I hear you say? Well, as you probably already know, this year the "Edge Bike Riding Team" are cycling 1000 miles from San Sebastian, Spain, to Edge Village Green, raising funds for the Williams Syndrome Foundation.

We are planning to arrive back in Edge for 6.00pm, when the Fete will be in full

swing. David Drew, the local MP, will be there to welcome home the weary travellers and along with the 1000-mile team there will be around 100 fun cyclists joining in for the last sixteen miles from Cirencester. So in order to celebrate our return the village of Edge is to be transformed into a little bit of Spain. As well as the Fete having a Spanish theme many of the houses will be flying flags and decked with bunting, giving a real fiesta feel to the village.

Why don't you join us at this first Edge Fete of the new Millennium and also welcome the return of the bike riders? The local press and radio will be there.

If you fancy taking part in the sixteen mile ride from Cirencester, or would like to help out at the Fete, please contact Mike and Valerie Adlam on 01452 813107.

## Former times remembered from further afield

### Drewett sisters

It was a delight to get an immediate response to my appeal in the March Beacon [Drewett sisters and dancing classes in the 1920s and 30s].

Pat Whitting of Gloucester Street is the niece of Jane and Bett Drewett and relates how she enjoyed going to see them along with her brother and sister. Are there others who have recollections of the dancing and singing that went on at Edge, Pitchcombe and Painswick? It seems a pity that so much of the craft and culture that was the life of those times should slip away unrecorded.

The spring issue of English Dance and Song Journal has a letter from Ruth Cavill, that her grandfather ran Folk Dance classes at Fortunes Well, Sheepscombe, in the 1940s. Did these embrace the village folk? I would appreciate any further information. Thanks to everyone.

Robert Norris, 'Cockayne, Loudwater Lane, Rickmansworth, Herts, WD3 4AL.

### Cranham Sanatorium

I was most interested to read the article in the March issue, for it was in about 1933 that my father, Commander E F Fanning RN, was admitted with TB to 'The Cotswold Sanatorium' at Cranham, where he spent the last year of his life.

His room had a glorious view over the valley through the doorway which was kept wide open whenever possible. On many fine days he was allowed to sit in a reclining chair on the veranda which ran along in front of his and adjoining rooms.

At that time my mother Helen Fanning, my elder brother Antony and sister Rosemarie had moved temporarily into Thorne and The Gables in Friday Street. We all took turns to bicycle up through Cranham Woods to see him, which was our only chance of being together. I remember to this day much of what he had to say, as well as my introduction to beer,

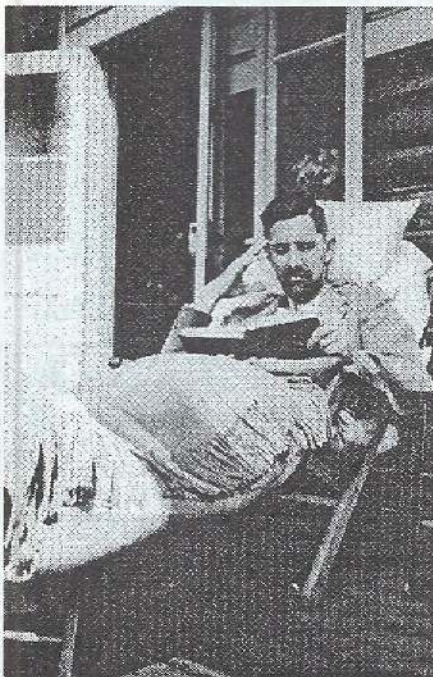
of which I was given a sample in the medicine glass while he had his lunch (I was 11 at the time).

He did much reading of course in such circumstances, and kept in touch with world affairs also through his portable Pye radio, of which the low tension wet battery cell was regularly taken down to Horne's Garage for re-charging. He also decided to keep a journal during the last year of his life which still makes most interesting reading today. He called it "Soliloquies of a Simple Soul" being the "Diary of a Diehard". I quote from the opening entry on 30th September 1933:

"Seek not to know the morrow's joy or pain, live but from day to day and count it gain."

The increasing incidence of tuberculosis today is indeed thought-provoking, and it will be interesting, if sadly retrogressive, to see if a present day Phoenix arises from the ashes in Cranham Woods.

Tim Fanning, Chalfont St Peter, Bucks



Commander E F Fanning on the veranda outside his room at Cranham Sanatorium in the 1930s

## OPEN GARDEN

The garden of Yew Tree House, Vicarage Street, will be open on Sunday 21st May, 2pm to 6pm, for the National Gardens Scheme.

## CENTRELINE



STONEMASONS & TRADITIONAL  
BUILDING REPAIRS

TEL: 01452 813892

FAIRFAX HOUSE VICARAGE STREET PAINSWICK



## SMITH BROS.

GENERAL BUILDERS  
AND DECORATORS

- NATURAL STONEMASONRY
- ROOFING - ALL TYPES
- NEW BUILD & EXTENSIONS
- ALL REPAIRS - MAINTENANCE WORKS
- ESTABLISHED 1956

2 Gloucester Street, Painswick,  
Gloucestershire GL6 6QN  
Telephone: Painswick (01452) 813051



## Procession of Witness



Christians of all denominations joined in the annual Procession of Witness around Painswick streets on Good Friday. The procession ended with a short service (shown above) at the war memorial garden, led by Revd Rowena Francis, Minister of Christ Church. After the service participants were invited back to Christ Church Hall for coffee and hot cross buns.

## Christian Aid Week: 14th - 20th May

This year's Christian Aid Week is 14th to 20th May. There will be an opening service at Christ Church, Gloucester Street, on Sunday 14th May, 6.15pm, when the visiting speaker will be the Christian Aid Area Organiser, Barbara Calvert. All are most welcome.

The Christian Aid Shop in Christ Church Hall will be open Wednesday to Friday from 10am to 5pm, and Saturday morning from 9am to 11am. A wide range

of excellent products will be on sale including cakes, preserves, toiletries, books, bric-a-brac, and of course the highly popular garden shop which will have a variety of bedding and other seasonal plants for sale. There will also once again be a 'quality stall' selling goods for a minimum of £5; these are returned to the donors if unsold.

Light lunches and refreshments will be served during opening hours.

Goods for sale will be welcomed between 1.30pm and 5pm on Tuesday 16th May and throughout the week.

The organisers would still appreciate offers of help. If you can help in the kitchen or bake for the lunches please contact Jean Newell on 812083. And please contact Hilda Musty on 812236 if you can make preserves or cakes, or can help on the cake stall.

## Flower Festival at St Mary's

St Mary's Church will be holding a Flower Festival this Ascension tide. A celebration of flowers will be staged in this magnificent church from 2nd to 4th June (Friday to Sunday), 10am to 6pm. St James's Church, Cranham, and St John's Church, Sheepscombe, will also be decorated. Entrance is free, and any donations will be given to local charities.

## Can you help?

I am trying to obtain about ten bergenia leaves for the Flower Festival in St Mary's. If anyone can help, I will be most grateful.

Anne Leoni, 812521

## Go forth and multiply...

To support the huge P2K (Pentecost 2000) celebration at Cheltenham Racecourse next month, Churches Together in Gloucestershire gave each of the churches in the county £10, inviting them to go forth and multiply it.

St Mary's Church recently organised a quiz in which each entrant purchased a set of questions for £1. £160 was raised for P2K, the winner of the quiz being Ted Burge and family. Meanwhile Christ Church have been making and selling jars of marmalade, and they also donated half of the proceeds of a recent coffee morning to P2K. St James the Great at Cranham also held a coffee morning, raising £110, and St John's Sheepscombe have been busy making and selling bread.

**MURRAYS**  
INDEPENDENT ESTATE AGENTS

**RESIDENTIAL SALES  
PROPERTY AUCTIONS  
VALUATIONS &  
SURVEYS**

*Offices also at*

**STROUD  
MINCHINHAMPTON  
MAYFAIR**

Victoria Street  
**PAINSWICK**  
**01452 814655**

**FRANCES FENWICK  
FLORAL DESIGN**

**WEDDING &  
FUNCTION SPECIALIST  
SYMPATHY TRIBUTES**

Portfolio of designs to choose from  
Professionally qualified florist  
Please telephone for a consultation:  
Frances Fenwick NDSF FSF  
07778 655220  
Fax: 01452 812246  
Unit 1, Kellavie, Wragg Castle Lane,  
Pitchcombe, Glos. GL6 6LU

**ELECTRICAL  
AND  
ALARM  
SERVICES**

New Installations, Rewires, Extra Sockets,  
Lights, Showers, Security Lighting,  
Economy 7 Heating, etc.

Professional intruder alarm  
systems fitted from £330.  
Remote control car alarms  
fitted from £70.

Door Entry and Closed  
Circuit Television Systems fitted

For a friendly, prompt and  
reliable service contact  
**Steve Gallagher**  
on Eastington (01453) 791209

ALL WORK  
FULLY GUARANTEED WITH  
NO ADDED VAT



## Edge together!

To celebrate the new millennium there will be a special service in St John the Baptist Church, Edge, to which all those who have been married or baptised in the Church are particularly invited to attend. The service will be at 11am on Sunday 18th June 2000. Bishop David will preside at the service and will also dedicate the new stained glass windows in the porch. After the service we will gather on the Village Green for a bring-your-own picnic lunch. If you know anyone who was married or baptised in the Church and who has moved away, please let them know; they will be very welcome to join us.

Peter Corley

## Catholic Church coffee morning

Held in the Town Hall on 15th April, the Catholic Church coffee morning raised £433.45 in spite of inclement weather. Many, many thanks to all those people who gave time, cakes, preserves, plants, raffle prizes and donations. We would especially like to thank Nina Harris, Pauline Lamont and Anne Smith for their special raffle prizes. The usual convivial atmosphere prevailed. Thanks must also go to those faithful regulars who have come for the last ten years, without whose support on the day all our efforts would be to no avail.

Raffle prizes were won by Joan Broughton, Rachel Taylor, Alice Playle, Mary Harris, Pauline Foreman, Clare Haynes, Louise Robinson, June Crane, Ptryana Sen and Peter Stevens

Helen Baker and Anne Leoni

## Inspiration from Eastertide

The last weekend in March saw a gathering of the Religious Society of Friends (Quakers) in the beautiful setting of Charney Manor, near Wantage, in the Vale of the White Horse. The weather was glorious, the company delightful. With a title 'Jesus As One's Guide' the group studied the little known Gospel of Thomas.

Jointly led by Painswickian Hugh McGregor Ross and his friend Jim Pym (who is a Quaker who also espouses Buddhism) we studied teachings and parables of Jesus as recalled by his disciple Thomas and almost certainly dictated to a scribe. The manuscripts were hidden by monks at a time of danger and discovered in a jar buried in sand in Egypt in 1945. This Gospel comprises 114 sayings of Jesus, each with an outer shape and inner meaning. Hugh has made a twenty-year study of the manuscript. These records may be close to what Jesus actually said.

The beauty and comfortable setting in Charney Manor with its long history and lovely gardens, together with the friendly atmosphere, made the weekend both relaxing and mentally stimulating and taxing.

In his scholarly book 'Jesus Untouched by the Church, His Teachings in the Gospel of Thomas', Hugh has shared his understanding with others. His industry was also at work in his book 'George Fox Speaks for Himself', a collection of writings, essays and original documents which reveals George Fox, founder of the Quakers, as a spiritual giant amongst humanity. This paperback is illustrated on the frontispiece by Colin McLaurin Jones of Vicarage Street who is also a

longstanding Quaker and gifted artist. George Fox wrote "Walk cheerfully over the world, seeing that of God in every man". What a lovely encouragement!

Many villagers will have heard Hugh interviewed by Revd Geoff Crago for Radio Gloucester on Sunday 9th April.

The Thomas book is available from local bookshops, ref ISBN 1-85-072213-7, at £14.95 hardback. The George Fox paperback is £5.95, ISBN 1-85-072081-9. Both books are published by Sessions of York.

Ros Harris

### YEW TREE TAILORING

Gentlemen's Made-to-Measure Suits, Jackets & Trousers

Quality Ready-to-Wear Clothing also available

Home Visits if Preferred

Painswick (01452) 812594



Eye examinations at home - for the housebound

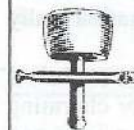
Specialised service - free (NHS) for those over 60 including Glaucoma screening and full sight test

Telephone 01453 833272 or 0973 488696 (mobile)

Graham O'Regan BSc FSMC FCOptom

### Max Knowles

PG Dip CGLI (Adv)



Stonemason and Conservator

- SPECIALIST IN LIME MORTARS FOR REPAIR AND CONSOLIDATION
- SITE SURVEYS AND CONSULTANCY
- ARCHITECTURAL CARVING
- SYMPATHETIC STONE CLEANING
- BESPOKE HEADSTONES
- CARVING COMMISSIONS

5 Glencairn Park Rd. Cheltenham Glos GL50 2NA  
Tel/fax (01242) 242242



Ready for the off... Helpers at last month's tenth annual Catholic Church coffee morning gather round the cake stall for a photo call before taking up their positions



**New world charm and old world charms**

Seeing ourselves as others see us can be an unpleasant experience. Not at the Senior Circle on 24th March when Canadian Bob Shea gave his impressions of life here in England, which proved a most enjoyable afternoon's entertainment - quite hilarious at times.

He and his wife Marg left Toronto five years ago for England's green and pleasant land - why, I still find hard to understand! - and made their retirement home here in Painswick, preferring our architecture to the large skyscraper towns of North America. Gasoline became petrol, their first floor is our ground floor and so on but I think his Canadian accent and his charisma must help him tremendously since he finds our government officials so very helpful! But he thinks we don't scream enough and cites a TV quiz with a free holiday prize as one example. How can we possibly accept this type of blackmail when the small print carefully shields a 60p+ per minute call charge and the benevolent organiser and BT obviously on to a good thing! And those Canadian lottery cards mailed to us offering a colossal win in return for a cash sum. They're absolutely illegal in Canada - so beware.

And too, our water bills. Unless our rainwater pipes actually go into a main sewer we shouldn't be paying the full rate. Check up on this - you could save yourself quite a bit.

Don't take it all lying down, he advises us. And hearing aids came in for some very heavy criticism for their low standard and high cost - a subject which sadly they know a great deal about.

Bob Shea has obviously done much to help local folk since his arrival using his expertise and, on a more serious note, they are both very conscious of the impact war has left on us, as a nation really in the front line.

It is good to know we have made a good impression on two very charming Canadians - may they have a long and happy retirement amongst us.

And then on 8th April we took a light-hearted look at antiques with the help of Barbara Blatchley. Some unexpected things can turn up in attics and I suggest we should all spend some time up there now that the warmer weather is here! If you are unlucky there, begin by collecting things which others are not talking about and you'll find endless enjoyment poking around local sales and country shops. We saw what turned out to be a brass dog collar, only worn when a mastiff was on duty, which would now fetch £120, but Leeds Castle in Kent has already a large collection of these. We saw an old cycle lamp, shiny and polished - there must be others lying in old garages awaiting discovery. One lovely and valuable sovereign holder came from the audience, in the form of a locket and chain.

Another item was a silver buckle worn by a member's mother at her wedding and quite collectable. A beautifully decorated straw box made before 1820 by a prisoner from the Napoleonic War and owned by another member was actually made from straw from a mattress - a craft followed by the prisoners and now a real treasure to own. An ear trumpet, a sash window "holder-upper", and have you ever heard of Cod's wallop? - we actually saw one of Mr Cod's bottles which contained the stuff.

So get out there and search - you could become quite rich if you try hard enough.

Daphne Hudson

**Season's finale for Music Appreciation Group**

After the outing to Oxford to enjoy a scintillating performance of the Barber of Seville by the WNO, we have sadly arrived at the end of our season. On 13th April it was members' turn to entertain us with their favourite recordings. Their selections were again testimony to the wide range in interests in our group and there is always something someone has never heard before. On the traditional side there were operatic favourites like Cavalleria, Magic Flute, Manon Lescaut and Solomon. By contrast, we heard the glorious New Zealand bass Oscar Natzke, a Creole mass, Opera Tremonisha by Scott Joplin (who reputedly never lived to hear its first performance) and 'Miserere', composer unknown, a most beautiful and moving Gregorian chant. And much else.

A note for your diary: Opening Night of the autumn season will be on 15th September - see you then!

Ralph Kenber

**Additional Curates**

Readers will be pleased to know that with donations and contributions from the coffee morning on 1st April, a grand total of £207 has been raised for the Additional Curates Society.

Ruth Robinson

**Cotswold Care Hospice**

**Painswick Support Group news**

The Painswick Centre was full to capacity for the Fashion Show arranged by Helen G Fashions of Stroud and Cheltenham. This was a new venture and a new venue for our group and was a great success. We were entertained by models wearing new spring fashions, wedding outfits and dresses and hats for Ascot. £865 was raised for the work at the Hospice. Thank you to all who supported us.

Flora Semark

At this event there will be a selection of home-made cakes for sale as well as a collection of ladies' good second hand spring and summer fashions. If you have any items of clothing you wish to donate to this cause we will be most grateful to receive them and will be very pleased to have your company and support at the coffee morning. For further information phone 813128.

Reigh Sutton

**Paul A. Morris**

City & Guilds

General Builder \* Plastering \* Patios  
Dry Stone Walling  
Natural Stone Work A Speciality  
Hard Landscaping

18 Strachans Close Stroud Glos GL5 3EB  
Telephone (01453) 752004  
Mobile 0781 8087375  
Email: paulmorris72@Hotmail.com

FREE ESTIMATES

**MICHAEL NYE**  
Fine Woodworking

Beautiful furniture, kitchens,  
cupboards, doors, windows, boats,  
musical instruments ...

==YOUR IDEAS BECOME REALITY==

Tel. Edge 01452 814372

**TREE SURGERY**  
Environmentally Sensitive

Thinning - Reshaping - Felling  
Planting: Fruit Tree Pruning:  
Wildlife Advice  
Professional Service: Fully Insured:  
Vision 21 Accredited

Landcare Services  
6 Pullens Road, Painswick

**John Rhodes**  
812709



## Notes from the Painswick Beacon Conservation Group

A committee meeting was held on 22nd March in the Church Rooms. Representatives of the Golf Club and English Nature attended.

• **Millennium Beacon:** It was announced that for the millennium celebrations the beacon described in previous notes was not after all used. Instead a large bonfire was lit just below the Beacon. According to reports the event was well attended.

• **AGM:** The next AGM will be on 13th October 2000 and we are pleased to report that a speaker from the local Bird Club has agreed to attend. He is Mr Nigel Snell, who will give a talk about the introduction of the red kite into the Chilterns. Please note the date in your diaries.

• **English Nature:** Mr Paul Hackman of English Nature described the changes in the management at the Ebworth Centre. Mr Tom Dixon will be the new site manager and will have responsibility for the beech woods and the commons of the Cotswolds. The appointment of an assistant manager is imminent. Their priorities will be the management of national nature reserves followed by SSSIs.

• **Notice Boards:** A little progress has been made with the preparation of graphics for the proposed notice boards.

English Nature undertook to ensure that the agreed funding would carry over into the next financial year. Paul Hackman also reported that he has taken advice about the best way to seek funding and will apply under the Bio-Diversity Scheme. The Golf Club were thanked for their promised contribution of £100 towards the cost of the boards.

• **Bicycles:** In contrast to our fears that the mountain bike facility opposite the Royal William might encourage more cyclists to venture up onto the common, in fact, according to reports, the opposite has occurred and the problem of bikes has virtually disappeared.

• **Horses:** There has been a reported problem with horses on the common causing damage to areas off the designated bridledways. It was recommended that maps be put on the notice boards clearly defining the bridledways. So please, horse riders, try to keep to the currently defined bridledways.

• **Trig Point:** Mr Blow has informed us that the trig point will be removed in May. So our familiar landmark of so many years will, sadly, no longer be with us.

• **Scrub Clearance:** A considerable area of scrub was cleared recently at the Royal William end of the common. This consisted mainly of ash saplings and brambles. Some residents have expressed concern about this activity so it is worthwhile now to explain the reasons for scrub clearance.

Painswick Beacon is an important area of unimproved limestone grassland which is renowned for its wild flowers, in particular orchids, and its butterflies. Allowing scrub to develop encourages the growth of rank grasses and weed and brambles, which eventually would become impenetrable thickets. It may be argued that such thickets would provide shelter for wildlife but this would be at the expense of our unique flora and fauna. The nearby beechwoods provide more than adequate wildlife habitat and it is more important to maintain the uniqueness of our grasslands.

Further information on the importance of these grasslands is given in an excellent leaflet entitled 'Cotswold Limestone

Grassland' which is produced by the Cotswolds AONB Joint Advisory Committee and English Nature. For those who are still concerned more information is available from Cotswold Countryside Service, English Nature, Farming and Wildlife Advisory Group, and of course our own 'A Guide to Painswick Beacon and Popes Wood'.

• **Travellers:** There is still a problem with "New Age" travellers parked near to Catbrain Quarry. Concern is felt about the length of time they have been there. Apart from the general mess and unsightliness, they are preventing the free enjoyment of the common by legitimate visitors. The situation is under continuous review.

• **Wood Chips:** There was comment about the unsuitable wood chips used on paths by the Golf Course. Some materials appear to be old building wood which still retained traces of paint. The committee is aware of the cost of preferred stone chippings and English Nature agreed to review this with the Golf Club.

• **Dog Dirt:** There appears to be a constant increase in the amount of dog dirt being deposited on the common and which, in time, will become a hazard to human visitors and to wildlife. So, please, dog walkers, try to take a 'poop scoop' with you when you walk your dogs.

• **Junipers:** Some research has been made into the origin of the juniper bushes growing on the common. It has been suggested that they originated from a source just south of Calais.

• **Constitution:** It was agreed that a constitution should be drawn up for the Conservation Group. Cedric Nielsen agreed to prepare a draft in time for the next committee meeting and thereafter for the AGM's approval

Duncan McKenzie

### Conservation Society meeting

On Wednesday 14th June the Conservation Society will hold a summer evening meeting at Lovedays Mill, by kind invitation of Mr and Mrs Charles Muller. At 7.30pm there will be a short talk by Howard Beard about the recently found footstones, followed by a conducted tour of the mill, and wine and nibbles on the lawn (inside if wet!).

Entrance is by ticket only, obtainable from Dawn Mallinson, The Patchwork Mouse, 813122, at £4 per person inclusive. There is a shortage of parking around the mill so please consider walking or sharing a lift (see Dawn about this). Numbers are limited and early booking is advised.

### Roland Beggan

Chartered Accountant

Fast & Efficient Service

Limited Companies

Partnerships & Sole Traders

For all your Accounting, Tax and Business Advice

Telephone 01452 812075

### Building Repairs Painting & Decorating Carpentry

T MIFFLIN

Enquiries Welcome

Telephone Painswick 813866



### Allen Hale

Your local stockist for  
The Real Meat Company

Allen Hale

New House, Friday Street  
Painswick. Tel 01452 813613

BRINGING YOU FLAVOUR  
WITHOUT EQUAL.  
WELFARE WITHOUT COMPROMISE



# Royal Visit For Painswick After An Inspector Calls?

I am accosted on the streets of Painswick by a reader.

"As soon as the Beacon arrives, I always turn to your bit first," she enthuses.

"Really?" I strike a suitably modest but literary pose.

"Yes. Sets the tone for the whole mag. Thought last month's was particularly good..."

"Thank you! ...er... actually, I didn't write a PaDS column last month..."

"Yes. Well, keep up the good work..." she finishes enigmatically, leaving me wondering if there might be a hidden message somewhere.

So why was the Beacon PaDSless last month? Well, to be honest, March was a bit of a slow news month for us. 'Rehearsals for *An Inspector Calls* proceed really smoothly' and 'PaDS fails to beat WI in Beacon Quiz Night' both come in the 'Posh and Becks go shopping' class in terms of hot news value. (The shocking revelation that one of the WI quiz team had been tested positive for home-made raspberry jam came too late for the copy deadline.)

Now that we know the jammy secret, PaDS is prepared! It's amateur jamaics for us all next year. Indeed, we went into serious training on 1st April when we served scrumptious cream teas to follow Pauline Foreman's excellent *Spring is in the Air* presentation of prose and poetry readings. A case of the eatable in pursuit of the speakable, as Oscar Wilde might have said.

Of course, this being April and England, no sooner was Spring in the air, than it wasn't. The Night of the Freak Blizzard turned the Painswick Centre into a scene of positively polar desolation. Rehearsals for *An Inspector Calls* (18th, 19th, 20th May) became more a case of

an inspector cools. But with all the grim determination of a latter day Captain Scott, director Gill Cox drove her team remorselessly on through the night, blissfully unaware that the Centre was rapidly submerging beneath the snow. It was only when Chief Techie Jacek Wolowicz went out into the night muttering, "I may be some time..." and promptly disappeared into a snowdrift, that the cast eventually mutinied and fled homewards. They all turned up several days later, dishevelled, wild-eyed and rambling. No change there, then.

Seriously though, the production is on course to be a great success with some memorable performances in a highly imaginative interpretation. Intrigued? Then get your tickets - while they last - from Painswick Post Office, Londis or Stroud Tourist Office (phone 01453-765 768).

Finally, on the subject of Victorian Queens (which we were, in a manner of speaking, a couple of paragraphs ago) I can reveal that sources close to the Palace confirm that negotiations are at an advanced stage for a suitably Royal Presence to open this year's Victorian Market Day (8th July). Her Majesty may well be amused by the genuine Victorian *What The Butler Saw* machine, which will

present a collection of dramatic vignettes by the simple insertion of a coin of the realm. Mind you, Tony Gibson, who is lovingly restoring the machine, tells me that some of the scenes are somewhat risqué, so there is the chance that Her Majesty may not be so amused after all.

Jack Burgess, PaDS

<http://freespace.virgin.net/louis.n>

## And a plea from the PADS wardrobe mistress:

'An Inspector Calls' is fast approaching and some of our actors are still without costumes. Not a sight for the faint hearted! We are in need of several Edwardian style items: a tail coat for a tall chap, 46/48" chest, and a grey suit and gentleman's coat or mackintosh, size 40/42" chest. Any loaned items will be treated with great care and returned clean.

Thinking ahead, as always, we are also gradually building up a comprehensive wardrobe collection for future performances and are always grateful for donations of unwanted period clothes. Please think of us when you are having a spring clear out. Many thanks to those who have so kindly donated items already. If you can help please contact Lynne Gibson at Butt Green Cottage or on 812380.

## Bellringers short of pulling power

The Annual General Meeting of the Ancient Society of Painswick Youths was held on Monday 27th March 2000, the Vicar presiding.

Patsy Sykes-Wright retired as Tower Captain, and the position is now vacant. The officers of the Society are as follows: Secretary - Deborah Pickin; Steeple Keeper - Alan Hodges; Tower Correspondent - Patsy Sykes-Wright.

Unfortunately, the optimism for the future expressed at last year's AGM had not proved justified and recently there were rarely more than two or three ringers for Sunday services. It was therefore decided that for the time being a single bell would be tolled or chimed for Sunday morning service from the beginning of April 2000, but if possible a band

would ring for Evensong on the first and third Sundays of the month and for other special occasions. There is a plan to have a Tower Open Day on 3rd June, to encourage interest in bellringing. There have been difficult times in the past where the bells were concerned, so hopefully the present situation will improve in the future. Two or three competent bellringers moving into the village would certainly be welcome, for it takes time and effort to learn to ring the bells and a strong commitment is needed to be a member of the band.

Some people will have heard an effect of the bells not being rung on a regular basis: the church clock now chimes the quarter-hours, as well as on the hour.

Patsy Sykes-Wright

### GODDARDS GARAGE

Cheltenham Road, Painswick



- \* Brake Safety Centre
- \* Full servicing & repair facilities
- \* Pre-MOT checks/MOTs arranged
- \* Ti Crypton engine tuning service
- \* Petrol/Diesel/Tyres/Exhausts
- \* Private Hire Taxi
- \* Paraffin/Coal/Calor Gas/Charcoal

Personal attention for your car  
Telephone - 812240

### G J HOGG PAINTER AND DECORATOR

Interior and Exterior Painting  
Wallpapering, Glazed Tiling

Estimates Free

8 Upper Washwell  
Painswick  
Glos. GL6 6QY

Telephone  
PAINSWICK 812505

### OAKLEY GARDEN SERVICES



For all your garden needs

MOBILE: 07979 590818

TEL: (01452) 814533



# Painswick in Bloom 2000

Once again it is time for us to plan our summer flower displays. As usual the Society is running this competition, so why not have a go at planting up a hanging basket or container? In the past our judges have offered helpful advice on maintaining displays throughout the season. Success usually results from good feeding (if possible with long-lasting fertilizer at time of planting), consistent watering, weeding and deadheading and also good overall planning with regard to height and shape and colour.

### Notes for Guidance

\* The Society's aim for Painswick in Bloom is to encourage residents and businesses to grow flowers and plants and to reward their efforts. It is hoped that the competition will enhance the village and give pleasure to all those who live and work in Painswick as well as visitors.

\* The judge is chosen by the

Society. This year it will be Mrs Geraldine Jellyman from Oakridge.

\* The competition covers all plantings in containers that can be viewed from the road. These may be tubs, window boxes and hanging baskets.

\* The area of the village within the dotted line on the map shown is judged. Those outside this area wishing to take part need to contact the Secretary. There is no entry fee.

\* There is one class for Residents and one for Businesses. There is one winner in each class.

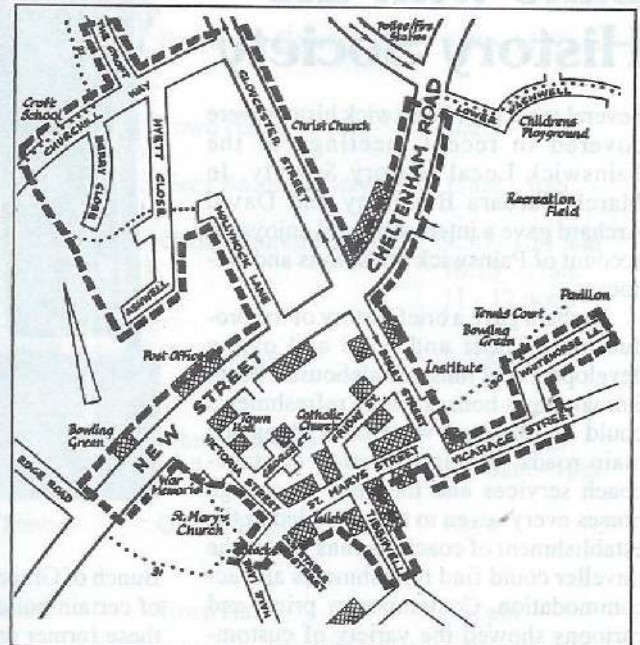
\* Judging takes place in July and August. The Secretary will accompany the judge.

\* The Winners in each class will be presented with the Society's silver trophy at the Horticultural Society Show held on Saturday 9th September. The committee have agreed that no winner shall be awarded first place in two consecutive years.

\* The results of the competition and those commended together with the judges comments will

be announced in the October Painswick Beacon.

Sponsored by Painswick Horticultural Society



Naomi Dunn

## Painswick Music Society's final concert - the Newbold Piano Quartet

The final concert in the Painswick Music Society concert season will be given by the Newbold Piano Quartet. This young, talented ensemble, with local connections, are now making a name for themselves performing nation-wide and in Europe and making appearances on BBC Radio 3 and Classic FM. They have won many competitions and awards - one in particular for their performance of the works of Fauré. Their programme will include works by Fauré, Mozart and Walton.

I am able to report that our concerts have been very well attended this season and membership has increased again. Pianist Jeremy Menuhin gave us a truly memorable concert with the church filled to capacity. The enthralled audience

persuaded him to give two encores! Our second concert given by the Schubert Ensemble of London was also very popular. The highlight of the afternoon was the premier of a newly commissioned work by Czech composer Pavel Novak who was present at the concert. This highly original work, the Marian Variations, is based on the theme of the clipping hymn and contains variations closely connected to the shape of St Mary's Church. Listening to a piece of music for the first time is not always easy, so the Schubert Ensemble gave us a splendid introduction before playing the work. The audience showed its appreciation of this premier and it was very obvious that the composer was moved by this. The piece will be part of the Ensemble's repertoire throughout their coming season of concerts. It was good to see some of the students who had worked under the direction of the Schubert Ensemble at our Stroud Schools workshops in the audience. We are grateful to the Ensemble for their excellent work with Stroud schools and the Croft School in Painswick.

The Newbold Piano Quartet concert is at 3pm on 13th May in St Mary's Church. Tickets are available from Shetland Shop or from Hywel James, 812419.

Naomi Dunn

### PRIVATE HIRE TAXI

ALLAN & MARTIN WEAGER

(Formerly Rylands)

01453-763947 (Allan)

01453-764845 (Martin)

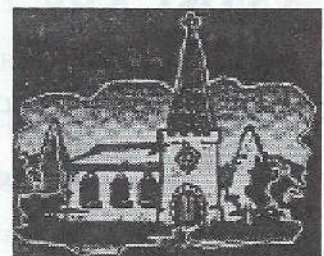
Allan (mobile): 07712-776470

Martin (mobile): 07808 722255

### PAINSWICK VILLAGE DENTAL SURGERY

Les Robinson B.D.S.

Private, BUPA, Denplan



Appointments available Monday to Saturday and late evening Thursday

\* Cosmetic Dentistry \* Hygienist  
\* Personal Professional Service in Relaxed Atmosphere

TEL: (01452) 814427

Hoyland House, Gyde Road, Painswick, Glos. GL6 6RD

### PAINSWICK MEMORIALS

HEADSTONES

VASES & PLAQUES

PET MEMORIALS



ADDITIONAL INSCRIPTIONS

FULL RESTORATION & CLEANING SERVICE

PHONE FOR A FREE COLOUR BROCHURE

TEL / FAX: 01452- 812032

MOBILE: 0797-9282643

FREE HOME VISITS AVAILABLE



## Down Memory Lane with the History Society

Several aspects of Painswick history were covered in recent meetings of the Painswick Local History Society. In March Barbara Blatchley and David Archard gave an interesting and enjoyable account of Painswick pubs, inns and alehouses.

Barbara gave a brief history of the production of beer and wine and of the development of inns and alehouses. From Roman times houses where refreshments could be obtained were built alongside main roads. The introduction of stage-coach services and the need to change horses every seven to ten miles led to the establishment of coaching inns where the traveller could find refreshments and accommodation. Contemporary prints and cartoons showed the variety of customers and the lively scenes found in these inns, where, in the 19th century, beer was sold for one penny a pint! By the 1830s there were eight public houses and twenty-six ale houses in Painswick.

David then took the audience down memory lane by showing old photographs of many of these places of refreshment and giving a brief history of each one. In some of the photographs were Painswickians known and remembered by many of the audience, who added their contributions to David's amusing anecdotes about the public houses and their customers. Now there are just two inns in Painswick, 'The Falcon' and the 'Royal Oak'; only the names of some of the houses, such as 'Star Cottage', 'Red Lion House' and 'The

*By the 1830s there were eight public houses and twenty-six ale houses in Painswick.*



*Mrs Fryer outside Central Stores in the mid 1930s*

Bunch of Grapes', and distinctive features of certain buildings, indicate the sites of these former drinking places.

There were further walks down memory lane at the Research evening in April in talks about the Central Stores and the Birt family. Helen Briggs gave a brief history of the Central Stores in New Street and recounted her experiences of living

there when her parents, Mr and Mrs Fryer, owned the business. The property had belonged to the

Painswick Institute whose trustees sold it in 1906 to Mr Fred White for £350. The business was subsequently leased out and in 1942 Mr Fryer bought the lease for £48 per annum. Mr. Fryer eventually bought the business in 1954 and remained there until 1959 when he sold it to the present owners, John and Barbara Hume. Helen described life behind the scenes at a shop which supplied high-class groceries and provisions. Hams were cooked on the premises, coffee was roasted and ground and tea was blended to suit customers' preferences. All dried goods were delivered in bulk and had to be weighed and packed. Mr Fryer employed errand boys to deliver grocery orders on their bicycles and apprentices, who were taught how to bone sides of bacon and to cut cheese. The types of fruit and vegetables stocked varied according to the season and were often supplied by local growers. Through her entertaining talk and her display of old photographs and documents Helen provided a fascinating glimpse of life in a village grocery shop in the mid-twentieth century.

In his interesting and informative talk about his researches into the Birt family in Painswick John Bailey described the sources he had used to produce family

trees of three branches of the family. John had received inquiries about the Birt family history from, among others, Graham Birt in Thornbury and Sidney Birt in Brill. By studying parish registers, census returns and the Register of Baptisms for Painswick Parish Church John found that there were three major branches of the family. As the same Christian names were used in successive generations in each of the three branches and some of the records gave only names and not addresses, working out the relationships between the members of the Birt families mentioned in the old records proved a challenging task. John showed copies of some of the old records and photographs of the Birt family who still have connections with Painswick. Through his researches, John has discovered that Graham Birt of Thornbury and Sidney Birt of Brill are fourth cousins once removed.

The next meeting of the Society will be in Stroud on Tuesday 23rd May (not 16th as stated in the programme) when Mr Ian McIntosh will lead a walk in the town centre and point out old buildings. This is a follow-up to the talk about old Stroud that Mr McIntosh gave to the Society last autumn. The walk will start at 7pm in the Church Street car park.

Gwen Welch

### LANDSCAPE GARDENING

*A Complete Garden Service*

*Regular Garden Maintenance  
Grass Cutting, Hedge Trimming*

*Construction of:-  
Ponds and Water Gardens  
Drystone Walling, Paving  
Fencing, Turfing, Seeding  
All Aspects of Tree Surgery*

FULLY INSURED  
*Ask for Adrian Harris*

**Floribunda**  
(01452) 527647

### PAINSWICK ELECTRICAL SERVICES

*N.I.C.E.I.C. approved CONTRACTORS*

SERVICE  
INSTALLATIONS  
REPAIRS



*The Electrical  
Contractors Association*

Mr M TURNER  
2, Folly Lane, Stroud, Glos. GL5 1SP  
01453-758342 and  
Painswick 812659



# The Painswick Beacon

VILLAGE DIARY to SATURDAY 3rd JUNE 2000

MAY			
Sat 6th	'Play Tennis' Day at Broadham. Fun session for juniors. All welcome. Below age 9 from 9.30 to 10.30; aged 9 and upwards from 10.30am	Broadham Courts	9.30 - 11.30am
	Bring & Buy Sale for Blue Peter 'New Life' Appeal	Town Hall	10am - 1pm
	Last day of the New Spring Exhibition 'Elemental'	Fiery Bacon Gallery	11am - 5pm
9th	Painswick Dog Training Club (Tuesdays) - Puppies and Beginners Intermediate Advanced Dogs	Christ Church Hall	9.30 - 10.15am 10.15 - 11am 11 - 12 noon
	Mothers' Union: 'These You Have Loved' - Members' favourite pieces of music	Church Rooms	2.30pm
10th	Conversational French Classes (Advanced) Conversational Italian Classes (Intermediate)	Library Rooms " "	9.30 - 11am 11.30am - 1pm
	Painswick Probos Meeting: "Rails from Russia to China" - Trevor Radway	Ostlers Room, Falcon	10am
	Horticultural Society AGM: Speaker Jenny Worsfold - "I'll be the judge of that!"	Town Hall	7.30pm
	Wives' Fellowship Opening Service	Christ Church	8pm
11th	Painswick and Area Jubilee 2000 Group: Talk by Alan Price on Aboriginal Australians and Jubilee 2000	Christ Church	7.30pm
12th	W.I. Market: Fridays	Town Hall	10am
	GDMS Study Day on the theme of "Church and State" - Speakers David Drew MP and Very Rev Nicholas Bury, Dean of Gloucester	Leckhampton	2.15pm
	Senior Circle: Behind the Scenes - Stan Newey	Town Hall	2.30pm
Sat 13th	Antiques and Collectors Fair	Painswick Centre	10am - 4pm
	Painswick Music Society Concert: The Newbold Piano Quartet	St Mary's Church	3pm
14th - 20th	Christian Aid Week		
14th	Painswick Bird Club: Guided Field Trip (Please see posters for details)	Cotswold Water Park	2pm
	Christian Aid Service: Speaker Barbara Calvert	Christ Church	6.15pm
16th	Christian Aid Shop: Goods for sale received	Christ Church Hall	1.30 - 5pm
	Jazz Evening: Local Musicians, no entry charge	Ostlers Room, Falcon	8.30pm
17th - 19th	Christian Aid Shop: Light Luncheons and Refreshments	Christ Church Hall	10am - 5pm daily
17th	Parish Council Meeting	Town Hall	7.30pm
18th	W.I.: Resolutions Meeting	Town Hall	2.30pm
18th - 20th	PaDS Production: "An Inspector Calls" by J B Priestley Thursday evening and Saturday matinee £5.00, Friday and Saturday evenings £6.00. Group bookings (10+) £4.00 Tickets: Post Office, Londis, Stroud Tourist Office. Tel bookings 01453 765768	Painswick Centre	7.30pm
Sat 20th	Christian Aid Shop:	Christ Church Hall	9 - 11am
	Cotswold Care Coffee Morning	Town Hall	
	PaDS Production: "An Inspector Calls" by J B Priestley	Painswick Centre	2.30pm & 7.30pm





21st	<b>COPY DATE: All items to Mrs Jillie Speed, The Old Carriage House, Edge, or Beacon Mailbox in New Street</b>		
	Open Garden at Yew Tree House for National Gardens Scheme	Yew Tree House, Vicarage Street	2pm - 6pm
22nd	Ashwell House Coffee Morning in aid of Cotswold Care Hospice	Ashwell House	10.30am - noon
22nd - 28th	'GOSH' Awareness Week - Going Onto Sheltered Housing - Contact Margaret Thorne-Say, Scheme Manager. Tel: 812726	Ashwell House	
23rd	Local History Society. Outing. Walk through Stroud led by Ian McIntosh. (Note change of date from programme)	Church Street Car Park, Stroud	7pm
24th	Senior Circle Trip round Elgar route	The Falcon	1pm
	Blood Donor Session	Painswick Centre	1.30 - 3.15pm & 5 - 7.15pm
	Annual Parish Meeting	Town Hall	7.30pm
	Wives' Fellowship: Cotswold Wardens - Paul Morgan	Christ Church Hall	8pm
25th	<b>DIARY DEADLINE: All items to Mrs Edwina Buttrey, 14 The Croft, or Beacon Mailbox in New Street</b>		
26th	Senior Circle: The Years Between - Mair Daly	Town Hall	2.30pm
	Official Opening of Guild of Craftsmen Office/Gallery	Painswick Centre	Evening
Sat 27th	Leonard Stanley Art Workshop - Preview: Admission Free	Library Rooms	2 - 6pm
28th	Leonard Stanley Art Workshop (daily until 3rd June)	Library Rooms	10am - 6pm
31st	No Conversational French/Italian Classes	Library Rooms	
	Junior Tennis. Robinson's Challenge for Under 10s. 01242-252098 for more details.	Broadham Courts	Afternoon
<b>June</b>			
1st	Theatre Club Outing to Stratford-on-Avon	The Falcon	10am
	Cotswold Care Support Group Meeting	Ashwell House	2.30pm
2/3/4th	Flower Festival (St James's Cranham and St John's Sheepscombe will also be decorated)	St Mary's Church	Daily
Sat 3rd	<b>JUNE ISSUE OF THE PAINSWICK BEACON PUBLISHED</b>		
	Gala Concert - Capella Singers and Michael Haynes (Piano)	St Mary's Church	7.30pm

Advertisement

# HAMPTONS INTERNATIONAL

The Old Chapel, Bisley Street  
Painswick, Glos. GL6 6QQ  
Tel: 01452 812354  
Fax: 01452 813279

email [painswick@hamptons-int.com](mailto:painswick@hamptons-int.com)  
The ultimate property se@rch: [www.hamptons.co.uk](http://www.hamptons.co.uk)

## HAMPTONS' PROPERTY REPORT MAY 2000

April has been a hectic month in the selling of houses in and around the Painswick area. We have been instructed on numerous properties and already half of them have been sold subject to contract. Although the general trend across the country seems to indicate a levelling out of the market with many agents saying it has peaked, this does not seem to be the case in Painswick. We get many compliments on the Hamptons web site and this is proved by the number of houses we have actually sold through this medium. Many applicants use the internet as a valuable means of seeing property as soon as it is on the market, as all our properties are immediately uploaded as soon

as they are placed on our computer as being fully marketed.

Exciting instructions last month included Berry Cottage - a charming 5 bedrooled period property in Paradise with magnificent views. Also another rural property is Down Cottage in Slad - a detached period house in a wonderful isolated position to suit those buyers who want to get away from it all. Shetlands in Far End Sheepscombe, Dover Cottage in Vicarage Street, Kingsmill Lane Cottage, and 5 Churchill Way, Painswick, have all attracted a buyer in the first weeks of marketing. We have also been instructed to sell The Old Bakery, in Painswick, and in Cranham No. 1 Church Close - a modest house with great potential for extension and improvement. Sales in April included Highgrove Barn, Painswick, Junipers in Edge Lane, 1 Hyett Close and Mead End in Cotswold Mead with many more properties due to exchange contracts soon.

If you would like to see your properties featured on the Hamptons web site, do please get in touch with the Painswick Office on 01452 812354.





## WI given an introduction to the Museum in the Park

In April Painswick WI members were welcomed on arrival at the Town Hall by the sight of a splendid collection of tulips, red, yellow and white, arranged by Jenny Urbani, which stood on the President's table.

We heard that gifts to the village had been bought with our funds, namely the new notice board outside the Town Hall and three walnut trees and an oak tree for Hambutts Field. The money had all come from the sale to the public of our leaflet 'Walks around Painswick'.

Order forms for next seasons's bulbs were available (no let-up for gardeners!).

Nina Harris gave a lively account of the WI County Annual Council Meeting in Cheltenham Town Hall, where she had been our delegate. She remarked what a thoroughly enjoyable day it had been.

Dr Kenneth Southgate, a retired GP, came over from Stonehouse to tell members at our meeting about the new Stroud District Museum. First he showed slides of exhibits at the present location in Lansdown, opened 100 years ago. One saw a fossilised crab's claw, two hundred million years old, a Romano-British stone altar found locally. From nearer our time came clocks made in Stroud over 300 years ago, a painting of Wallbridge in the eighteenth century showing the new Thames and Severn canal (opened in 1783): woollen cloth, red for military uniforms and green for billiard tables, was seen hanging out to dry in the surrounding fields and on Rodborough Hill.

One saw the first lawn mower, invented in Stroud in the nineteenth century, Listers' air-cooled engine, an early typewriter, ditto telephone, a bean planter, a cock-fighting chair and an advert for Sun-light soap.

Turning to the museum's new location, the refurbished Mansion in Stratford Park, a Grade II Listed clothier's house dating from 1670, due to be opened to the public next December, Dr Southgate showed us a busy scene. There were cans of paint, brushes and ladders, as well as a newly-built, single-storey wing, behind the house, bright and modern in style.

When the alterations and refurbishment have been completed, the walls dried out and the exhibits, including many which are at present in store, are all in place, the museum should be one of which the district can be justly proud.

Dorothy Binns

### Painswick Bird Club



At a recent meeting twenty members of Painswick Bird Club heard Mike Sutcliffe give a most knowledgeable and informative talk on eighteen species of waders and their identification. A combination of slides of identification charts together with those of birds in their natural habitat showed us how to name each type.

A wide ranging question-time followed, much of which emphasised the gaps in our present knowledge of bird behaviour and reasons for their specialised evolutionary development.

The next event of the club will be a field trip, using cars, to the Cotswold Water Park near Cirencester on Sunday 14th May at 2pm. The visit will be a guided tour with emphasis on the hobby - our quite rare summer visitor.

Malcolm Cooper

#### ANDY AYLNER

#### PLUMBING & PROPERTY MAINTENANCE

All work undertaken  
Quotations given  
Local recommendations available

GLOUCESTER 416116



## The Falcon Inn

Superb LUNCHES and DINNERS in our restaurant every day. Bar snacks, morning coffee.

The recently refurbished STABLES ROOMS are available both daytime and evenings, complete with their own bar, for your private receptions and parties of up to 60 persons.

Our en-suite bedrooms have every modern facility and are ideal if you have friends or relatives coming to visit you in the PAINSWICK area.

Call RIONA or JON on 01452-814222 for more details

**Trainee Teacher** available for child care during the summer holidays, 26th June to 2nd September. Excellent references available, non-smoker with full drivers licence. Contact Anne Hardiman on 01453.750145 or 07909.693055

**Rock Cornwall.** Comfortable bungalow, sleeps five. Some weeks available. Telephone 812832

**Lanzarote.** Luxury one bedroom bungalow on quiet beach-front resort with 3 pools, restaurants, bars and shops nearby. Summer, autumn and winter vacancies. Telephone 01452.611873 (after 12th May).

**Going on Holiday?** Do you need your house, dog or cat looked after? Ring Maxine and Philip Jarman 814180. Most dates available.

**Mitsubishi Colt.** £500. Metallic gold, 96,000 miles. New battery, good tyres, fair condition. Taxed, MOT until September. 812678

**Honda HRB425C 17"** powered drive petrol lawn mower, for sale. New July 1999 with 5 year warranty, just serviced. £300. 814548

**Person or family** to look after and speak English to my German speaking 7 year old son, weekdays 17-27 July, 9.00am to 5.00pm. Please contact Charles Dorman on 814548.

**Cleaner** needed for family home in centre of Painswick. 813233

**Struggling to Survive Your Exams?** Private Tuition/Conversation offered in French, German or Spanish at all levels. 01285.821450

**Lockable Garage** urgently needed. Please telephone Rachael 01242.250197

**Rover Metro 1.1 J.** 55,000 miles; service records. MOT to December 2000. Economical 5-door car. £1,500. 812296

**To Let - Bungalow Unit** at Resthaven, Pitchcombe. 812682

**For Sale.** About 500 good quality new red engineering bricks, buyer to collect. £50. 813440

**MINI-ADS** - non-commercial, maximum of 30 words - are 10p per word with a minimum payment of £1. Max 14 accepted per month. *Beacon* subscribers have 25% discount. Please send money with mini-ad to Leslie Brotherton, Longhope, Blakewell Mead, Painswick GL6 6UR. If paying by cheque, please make it payable to *The Painswick Beacon*. Receipts forwarded if requested.



# The Personal Column

## Welcome

We welcome JON and DIANA STRACHAN and their children Molly (4), Harriet (3) and Tom (nearly 2) who have come to live at St John's, Orchard Mead, from Humberside;

also MARGARET and ROGER TEAGUE who have moved into 14 Hyett Orchard;

also SHEREE CARVER who moved into the top flat at Ashleigh, Gloucester Street, some time ago;

and MARK KANE and family who have moved to Lower Washwell.

## Change of House

EILEEN COTTLE has moved to Towys, Tibbiwell Lane.

The GRAY family are moving to Junipers, Edge Road, from The Croft.

## Get Well Soon

We have many on the sick list this month - FELICITY SHARWOOD-SMITH, WILLIAM UNWIN, DORRIE CHILD, BETTY BIRKS, MURIEL ANDREWS, BILL EVANS, SID HOLDER, FIONA FLETCHER and LESLIE BROWN;

and several who have been injured in falls - PEGGY COWBURN, PEGGY GREVETT, SHIRLEY PURDEY and LEN TAYLOR.

## Condolences

Our sincere sympathies to the family and friends of BLANCHE ROCK, GLADYS STEVENSON, JEAN JUDD, ANDREW BLAND and VALERIE MILES whose bravery against impossible odds was an inspiration to all who knew her.

## 100 Birthday

Our birthday wishes to BRIAN de COURCY IRELAND who was one hundred years old on 5th May. A week before his birthday Brian gave the third of his interesting talks to the Senior Circle on life in the Navy.

## 90th Birthday

Congratulations to CHRISTINA MATHERS who was 90 years old on 23rd April.

## Golden Wedding

Congratulations to JEAN and LES LEWIS who celebrated their golden wedding on 12th April.

## Thank You

"We would like to thank all the friends and family for the cards, flowers and gifts given to us on our Diamond Wedding Day. Special thanks to Christine and David for their unexpected surprise gifts."

Love, Queenie and Bert (Grant)

## NEW COMPUTER?

*Need help with "getting going"?*

Just one hour or several sessions - whatever will help to increase your confidence and solve initial problems.

I am a wordprocessing specialist with many years of training experience. Please call Gill Cox on 01452 814367

DAVID ARCHARD  
(Formerly Burdock & Son)

In association with  
SELIM SMITH & CO.LTD.

## FUNERAL DIRECTORS

Private Chapels of Rest  
24 Hour Personal Service  
Pre-Payment Scheme Available

SOUTHWOOD LODGE  
74 PRESTBURY ROAD  
CHELTENHAM

01452-812103

or

01242-525383

Mobile phone no. 0860-748286

## 'By the way' answers

(See questions on page 12)

Answers: Randwick - St John, Miserden - St Andrew, Edge - St John the Baptist, Birdip - St Mary, Cranham - St James, Upton St Leonards - St Leonard!

Have you a receipt numbered between 1 and 554?

Beacon subscribers - at 23rd April			
	2000-01	1999-00	1998-99
New/Returned	70	139	123
Renewed	484	518	498
To date	554	657	621

## THE PAINSWICK BEACON

### Next Issue

Publication Date  
**SATURDAY 3rd JUNE**

Items for publication to Jillie Speed\*,  
The Old Carriage House, Edge, by  
**SUNDAY 21st MAY**

Mini Ads to Leslie Brotherton,  
Longhope, Blakewell Mead, by  
**SUNDAY 21st MAY**

Business adverts: Contact Liz Fisher,  
Harebell Cottage, Blakewell Mead, by  
**THURSDAY 18th MAY**

Diary items (only) to Edwina Buttrey,  
14 The Croft, by  
**THURSDAY 25th MAY**

\* Articles for publication, and other items for the Beacon Committee, may also be placed in the **Beacon Post Box** in New Street (next to the telephone kiosk).

Items for publication are welcomed on computer diskette (returned to you after use) or by e-mail to:  
[Painswick.Beacon@dial.pipex.com](mailto:Painswick.Beacon@dial.pipex.com)  
In all cases please give your address and phone number. E-mail messages received by the copy deadline will be acknowledged on or before that date.

### Beacon Committee

Editor: Alan Bamber 814500  
(Beacon calls only)

Copy Editor: Jillie Speed 814148

Personal Column: Rachel Taylor 813402  
and Angela Hudson 813250

Business Advertising: Liz Fisher 812130

Diary: Edwina Buttrey 812565

General Features & Sport:  
Terry Parker 812191

Distribution Coordinator:  
Arthur Lock 813565

Treasurer: Leslie Brotherton 813101

The  
*Anthony  
Fisher*  
Curtain Company

**SPECIALIST  
CURTAIN MAKER**

*A very personal advice and making service for simple drapes or elaborate window dressings. For an appointment to see thousands of fabrics, everything from Sandersons to Coloroll, in your home or my office/showroom at:*  
41 Brunswick Road, Gloucester

*Please ring Glos 309333 (day) or Painswick 812130 (evenings).*