

The Painswick Beacon

Volume 47 Number 7

October 2024

Painswick Feast, Apple Day and Clypping

As stall holders arrived from nine o'clock onwards many took the option of setting up in either the Church Rooms or the Town Hall, the forecast for the day being for heavy rain, while others in true 'stiff upper lip' fashion set up outside along with the food and drink stalls.

The worst of the rain kept away to allow the dog show to go ahead in the morning as planned but the children's activities moved to inside the church as did the Clypping service, led by Revd Andrew Leach, in the afternoon (by which time the rain had well and truly arrived).

A good number of people both locals and from further afield braved the weather and joined in the various activities.



Apple Pressing



Best in Show



Pedigree Champion



Music ensemble playing at the Clypping service

A big 'thank you'

Above all a grateful and heartfelt thanks is offered to Abigail Smith who for most of the last ten years has been the main organiser of the *Painswick* Feast. This was her last feast having now moved on to Hartpury. We wish Abigail and family all the best for the future.



Beacon Distribution - help!

Over the last couple of months we have put in a plea for volunteers to take on the monthly task of getting the Beacon out to our individual distributors.

The current team of three are stopping after twenty years and so far we have only got two volunteers who are not able to commit to the job every month. We really do need two teams of three people to take over this part of the Beacon operation.

As things stand there is some doubt over whether we will be able to get the Beacons out to the individual distributors for the November and following issues.

If you could help please contact the distribution team at: distribution.beacon@painswick.net

Bat 4 Barney

Over £1,400 was raised for the Barnaby Webber Foundation at a charity cricket match the idea of Lizzie Holohan and her daughter who captains the ladies team here in Painswick. See the full story on page 13.



PARISH COUNCIL NEWS - from the meetings held on Wednesday 18th Sept. 2024

Planning Committee Meeting

Present: Cllrs: Andy Cash (Chairman), Ann Daniels, Adrian Gyde, Ian Massey, Roey Parker

Apologies: Cllrs Sandra Hunkin and Rosie Nash

Matters requiring a decision:

The Committee agreed to support the following applications.

S.24/1341/LBC

Kings Mill House, Kings Mill Lane
Work to conserve a first floor level window.

S.24/1419/LBC

Kings Mill House, Kings Mill Lane
Repairs & conservation of a ground floor fireplace.

S.24/1250/LBC & S.24/1249/HHOLD
The Old Vicarage, Damsells Mill Lane, Sheepscombe

Erection of a stone terrace and steps on the western elevation.

S.24/1226/FUL

Land At Edge Road (Retrospective).
Installation of hardstanding to existing stable yard & erection of a retaining wall.

S.24/1369/LBC

Upper Cottage, Tibbiwell Lane
Installation of a partition wall at second floor to create a shower room.

S.24/1144/HHOLD

Mirfield, Stroud Road
Erection of garage (revised design following S.23/0631/HHOLD)

S.24/1465/TCA

Southfield House, Vicarage Street
(1) Laurel. Fell to near ground level. (2) Group of 3 Yews on the side boundary. Reduce their height to near previous. (4) Hazel coppice to the left of item and remove the 6 thickest stems. (5) Magnolia on the lower lawn. Fell to near ground level.

S.24/1503/TCA

Butchers Arms, Damsells Mill Lane, Sheepscombe
Yew Tree - Reduction of a maximum of 4 metres from tips of branches.

The Committee agreed to object to the following application: on the grounds of overdevelopment, in line with Policy HC8 of the Stroud District Council Local Plan. S.24/1422/HHOLD

Beech View, The Park

Erection of a rear extension and alterations to landscaping.

The Committee agreed to object to the following application as it will be detrimental to the Listed Building and loss of privacy to the neighbouring property:

S.24/1485/LBC Butt House, Butt Green
Replace existing dormer window.

Parish Council Meeting

Present: Cllrs: Adrian Gyde (Chairman), Andy Cash, James Cross, Selina Gibb, Sandra Hunkin, Gary Luff, Ian Massey, Abigail Smith.

In Attendance: 3 Members of the Public
1 Member of the Press

Apologies Cllrs: Cllrs Ann Daniels, Roey Parker, Rosie Nash and County Cllr Sue Williams.

The Minutes of the meeting held on 17th July 2024 were accepted and signed as a true record.

Reports.

The reports of the county and district councillors are available on the Council website.

The Chairman reported that Phil Taylor has resigned as the Councils representative on the Slavutych Working Group. The Council extend its thanks to Mr Taylor for his efforts on the Working Group. The Chairman also reported that many residents are concerned about inappropriate parking in the Village. Finally, he updated the Council on the Goodwill Evening.

Accounts.

The Council agreed to a grant of £2400.00, but asked that the PCC look at reducing the number of [grass]cuts next year, in order to try and reduce the costs.

The Council considered a quote to supply and fit a multi fuel stove in the Cemetery Lodge, but a Member raised concerns in regards to the air particulates emitted from Multi Stoves, it was agreed to defer this item and agreed that Cllr Gary Luff will work with the Lead Cllr for the Cemetery refurbishment, Cllr Rosie Nash

in regards to other secondary heating options, this will be further considered during the October PC Meeting.

Reports from other bodies

Painswick Beacon Conservation Group. Cllr Ian Massey updated the Council on recent activities in particular the cattle on the Beacon.

Painswick Feast. Cllr Abigail Smith updated the Council on the forthcoming Feast.

Painswick Community Support Group. Cllr Abigail Smith updated the Council on its recent activities included preparing for the next round of Community Lunches and Community Suppers.

Ward Reports

Steanbridge Lane. Cllr Andy Cash updated the council in respect of the ongoing issues, he also extended his thanks to both the County Cllr and District Cllr for their support.

Sheepscombe. Cllr Sandra Hunkin updated the Council on Sheepscombe matters, including the white lines, signage and the spring problem by the Village Hall.

Community Speed Watch. Cllr Abigail Smith updated the Council on the Community Speed Watch Team and also the installation of the Autospeedwatch system to be installed in Edge hopefully by January 2025.

The date of the next meeting was set for 16th October 2024

Craftsmen Builders



Building & Plastering work
No job too small

Call George 07716 007326
Painswick 01452 814828

www.craftsmenbuilders.co.uk

painswick osteopaths

Paul Stamp D.O. Helen Froggatt D.O.

Tel: 01452 301748

• Structural • Cranial Osteopathy
• Sports Injury • Neck, Shoulder, Hip, Knee
Parking Available

CLARICO EXTERIOR CLEANING

WINDOW CLEANING
High reaching water-fed pole system
(suitable for delicate windows)

SOFFITS, FASCIAS & CLADDING
GLASS VERANDAS
CONSERVATORIES & ALIKE
SOLAR (PV) PANELS

£5 Million Public Liability Insurance

Husband & wife team, Dan & Lois

"We'll always notify you the day before we're due"

T: 07552 398638
claricoexteriorcleaning@gmail.com
www.claricoexteriorcleaning.co.uk

CBS

PAINSWICK BASED

INSURANCE BROKER
PERSONAL & COMMERCIAL COVER

Contact Adrian Gyde on
07770 881 695
www.cotswoldbroking.co.uk

Directory 2025

For many years the Beacon has produced an annual directory as a useful source of local information for Painswick residents. This has been provided free with the January edition of the Beacon and delivered to every household in the parish of Painswick.

Unfortunately, the cost of providing this service has increased year on year and there is also the additional problem that collecting and distributing it has been an increasing weight burden to the distribution organisers and the distributors themselves. For these reasons the committee has decided not to produce the hard copy this year but make it available as an online version of the same document accessed through the Painswick Beacon website. The same information is present and can also be self-printed by individuals should they or non-computer friends or neighbours require a hard copy. Past Directory editions can also be mostly relied on for details of clubs, businesses, services, societies, agencies etc. This change to online only for this year will help improve our management of costs.

Please update any changes to the 2024 entries by contacting Carol Maxwell at carolmaxwell@talktalk.net or directory.beacon@painswick.net to keep the information up-to-date, comprehensive and accurate.

Richard Aspinall

Vacancy for a School Governor



The Croft School in Painswick has a vacancy for someone to join the Governing Body. The Croft is a thriving Primary school rated 'Good' by Ofsted. The role of a governor is to ensure that the school is well run, meets its legal obligations, and sets the highest standards for the education it provides for its pupils.

Governors attend six main board meetings plus other committee meetings every year. We also try to get to know the school well by spending time in the school and attending school events.

Our governors bring a range of skills and experience to the role. It is not necessary to have a professional background in education. Any experience of a governance role in other fields would be valuable but not essential. Above all, we need people with the energy and drive to help us make the school the best it can be. We would particularly welcome people with a track record of community outreach or fundraising, and any links to businesses or organisations in the local area would certainly be of interest. One of our goals is to extend the reach of the school more widely into the community, so there is a real opportunity for a new governor to bring expertise in that area.

If you think this is an opportunity which could be of interest or you would just like to find out more, please contact the chair of governors, Alastair Duncan, at aduncan@croft.gloucs.sch.uk to arrange a discussion to explore the role.

Rebecca Gore

Painswick Educational Trust

Are there any young people out there resident in the Painswick area who need financial help with their education or training in these difficult times? We have limited funds but the Trust can help with books, tools, IT equipment etc. We are meeting soon to consider applications so if you need to know more please contact Antonia Wright by email at painswickeducationalfoundation@gmail.com or Joy Edwards on 07810 476 473.

Joy Edwards

Locals' Night at the Falcon

A Locals Evening with complimentary BBQ and music was held at the Falcon on Sunday 15th September (5-7pm), for their local discount card holders. From the scene below in the Shires bar it was clearly well attended.



PAINTING & DECORATING

Domestic & Commercial
Internal & External
Gloucestershire & Cotswolds
Based in Painswick
Detailed quotes
Fully insured

Call Ken Ticehurst
07808 511066
glospaint.co.uk

MANN Jewellers
Established 1741
8 GEORGE ST, STROUD

GOLD COINS WANTED

Sovereigns, Krugerrands & Bullion
bought for cash or instant bank transfer
We also buy **jewellery & classic watches**

Visit our Stroud shop
01453 764097
Mention this ad for a free appraisal



We are still an independent family-run business

P.L. ALLARD
BUILDING & ROOFING LTD.
Specialists in Period & Modern Property

Cotswold Stone Tiling	Interior Renovation
Natural Slate	Bathrooms & Kitchens
Woodstoves	Chimney Repairs
Guttering & Leadworks	General Building

T. 01452 814278 M. 07841 695705
www.allardbuilders.com p.allardbuilders@gmail.com

BRIGHT & BEAUTIFUL

A BEAUTIFULLY CLEAN HOME AND A BRIGHTER YOU

HOLISTIC HOUSEKEEPING	PURE ECO FRIENDLY PRODUCTS
STRICT SECURITY PROCEDURES	TRUSTED TEAMS OF UNIFORMED STAFF
REGULAR CLEANS	HOLIDAY LETTING CLEANING
	DEEP CLEANS

01452 401171
gloucester@brightandbeautifulhome.com

This month, the Exedra Garden is bursting with colour as perennials and annuals create a magical display. Look out for the vibrant African marigolds, the charming *Mirabilis jalapa*, and the striking *Salvia horminum* 'Oxford Blue'. Across the Garden, trees are beginning to transform into stunning shades of red and gold as autumn sets in.

**Painswick
Rococo
Garden**

In the kitchen garden, our heritage fruits are swelling and ripening, with apples and pears nearly ready for harvest. These fruits will be used by our café, and any surplus will be turned into fresh-pressed, pasteurised juices, available for purchase in our shop.

Upcoming Events:

October half-term brings the Great Scarecrow Trail, running from 26th October to 3rd November. During this fun-filled week, the Garden will be open daily from 10am to 5pm. For the rest of the month, you can visit from Wednesday to Sunday, also 10am to 5pm.

There are also two great workshops this month:

Creating Plants for Free – A hands-on workshop led by our head gardener and the Exedra Nursery team, 14th October, 10am-2pm.
Willow Weaving with Susie Early – Learn this timeless craft, 4th October, 10am-4pm.

To book your visit or an event please visit www.rococogarden.org.uk, email info@rococogarden.org.uk or call 01452 813204.

Marta Gardner

Build your own scarecrow for Rococo Scarecrow Trail

How to build a Halloween themed scarecrow.

First things first...Reuse and recycle where possible, nothing offensive - this trail is aimed at children, a bit spooky is fine - it's Halloween after all, and size doesn't matter!

Please don't use anything sharp or spikey & nothing that would be harmful to nature or the environment if your scarecrow falls apart! Make your scarecrow weatherproof and sturdy. Online inspiration is plentiful, book & film characters are welcome.

Name your scarecrow and bring it up to Rococo Garden before 21st October for installation by the Garden team.

We will also need some information about the inspiration behind the design and a brief bit of information about who you are (50-60 words). We will create posters for each scarecrow with this information. I'll be in touch to get some information about the inspiration behind the scarecrow and your company/organisation.

Most importantly have fun!

A few tips on how to make a traditional scarecrow.

(Please feel free to get as creative as you like, you don't have to follow these instructions!)

- **Framework** — if you are building a traditional scarecrow then make a cross from two pieces of wood/sticks/broom handles and secure it well. The body could also be made from old plastic plant pots, terracotta plant pots, old buckets, anything that you have to hand.
- **Body** — use old clothes, charity shop purchases, old sacks and stuff with straw, leaves, hay, shredded paper, old newspaper etc (consider filling bags with your stuffing and using them inside the clothing, this will make your scarecrow more robust and weatherproof)
- Tie sleeve ends and trouser bottoms to keep shape.
- **Head** — make the head using scrap fabric, an old pillowcase or hessian sack. Create facial features with fabric scraps, marker pens or embroidered stitchwork. Hair can be made from raffia, an old mop head, fabric scraps or thin rope. Does your scarecrow need a hat?

Five Valleys Wind Band

The Five Valleys Wind Band is calling all brass payers! We have vacancies for trumpets, trombones, French horns and tuba.

Contact us at glosmusic@gloucestershire.gov.uk if you want more info, or visit "About Five Valleys Adult Wind Band" at: <https://www.gloucestershiremusic.co.uk/adult-groups/five-valleys-adult-wind-band-fvawb/>

We are a friendly and supportive group, and you would be welcome to come and join us. Rehearsals are at Archway School in Stroud, 0930-1130 on Saturdays term time only.

Stephen Aiano

HUNTER • PEARCE
D E C O R A T I N G

Reliable and Professional Service
Interior and exterior work
Paint and colour advice upon request

CONTACT

☎ 077333434773
✉ info@hunterpearce.co.uk

BANCROFT LIVINGSTON
— BATHROOMS —

Bespoke bathroom design and installation

jake@blbathrooms.co.uk
www.blbathrooms.co.uk



**Gardens
&
Interiors**

www.cotswoldcontemporaryliving.com
Designed in Painswick 07832 351864

News from St Mary's

By the time you read this, I shall have retired after 14 years as Associate Priest to our family of churches across the Beacon parishes. It has been very moving as I let go of my responsibilities to say farewell in each of our churches over the past weeks, with a memorable benefice service in Painswick as the climax on 15th September. Elaine and I would like to thank everyone for so many expressions of kindness and generosity to us as I stand down from my role in the benefice. We have been deeply moved by your words and gifts to us. It has been a privilege over these years to get to know so many of you and to have walked alongside you, in both good and difficult times. I would also like to thank Revd. Sarah and everyone in our ministry team for their companionship and support.



Endings are never easy. There are countless ways we expect the story – our stories – to end. There is the traditional ending of our childhood stories :“And they lived happily ever after.”Or perhaps there is an ending more suited to this context; the words of Julian of Norwich: “All shall be well, and all shall be well, and all manner of things shall be well.”

There is a hymn verse which runs: “ We are pilgrims on a journey and companions on the road. We are here to help each other walk the mile and bear the load.” Well, so many of you have walked this road with me over the last 14 years- and before that, when I was training for ministry- and I am grateful for your support and prayers. At times there has indeed been a load to bear in the life of our benefice and the bearing of it has been a communal effort. There have also been times of joy which again we have all shared. Through it all Elaine has been by my side and I am grateful to her.



Revd. Andrew and Elaine

Perhaps it is difficult to relate to the concept of "retirement" in a church context because we never retire from the kingdom of God. Retirement itself is a relatively recent phenomenon and perhaps most common in our modern western civilisation, so it is difficult to find thoughts on it in the bible. Although we may retire from official positions, what about our service in the church? God can certainly use people of all ages who are willing to be of service to Him. We can't stop the ageing process, but we can be renewed inwardly by our faith. We can and should "still bear fruit in old age" (Psalm 92.v 14) .

I shall be taking some time over the next few months for rest and refreshment, to let go of the role I have held for the past 14 years and to reflect on what comes next for me; hopefully finding a rhythm of life more suited to where I find myself now. We are not leaving these parishes, so you will still see us around. I have so many happy memories of my time in ministry here, and I look forward to a quieter but equally fulfilling time in retirement. I don't yet know what shape it will take, but as Julian of Norwich phrased it: “All shall be well, and all shall be well, and all manner of things shall be well.”
With grateful thanks to you all.

Revd. Andrew

Have you lost a loved one?

Every year in early November at All Saints and All Souls tide there is a special service at the Parish Church to remember those whom we love but see no longer. You and your family might like to come to this service on Saturday 2nd November at 3pm St. Mary's Church, Painswick. It is a service for everyone in the Beacon Benefice and for all the churches in Painswick.

At the service there is an opportunity to light a candle in memory of all those who have died this year, and they and many others, are mentioned by name. All are welcome whether you have been bereaved or not. If you would like a member of your family or close friend remembered by name, please email (beaconbeneficeoffice@gmail.com) or on paper through the letter box in the Lychgate door. There will also be a list on which names can be written on the table inside the church. Names should be received by Wednesday 30th October.



A Week of Prayer for World Peace

Prayers for World Peace will be said each day from Monday 13th to Friday 20th October between 9.30 and 10.00am in the Church of Our Lady and St Therese, Friday Street.

Everyone is welcome.

Trees, shrubs or hedges need attention?
Call for a free quote from the local experts.
01452 941922

Trusted with the Painswick Yews for over 35 Years

Trustpilot
Rated "Excellent"

TRUSTMARK
Government Endorsed Quality

Google
4.9 STAR
CUSTOMER RATING

Tree Maintenance Ltd

**Peter Barnfield
Painter & Decorator**
All Interior, Exterior + most DIY work
30 years experience

Tel: 01452 610199
Mob: 07881 408380
Email: Barnfield.peter2@gmail.com

Cotswold Animal Services
Home environment doggy day care and boarding based in Painswick.
Group socialisation dog walks or 1-1's.
Equine care and cat sitting in your home.

+44 (0) 7814 955975
www.cotswoldanimalservices.co.uk

Jottings - Plantains

The plant you see around us in the countryside, there are at least six different ones in this country. The Ribwort Plantain, is one of the most common of plants in the countryside, most of its growth comes from its base and can therefore stand heavy grazing by cattle and the constant mowing of your lawn and you see a lot of it on very well used foot paths because they can stand all the feet walking on it.

When used in grassland for making hay, the grass part dries faster than the plantain, so you must make sure this is dry as well, because when you bale the crop if it is not dry it could cause a fire through internal combustion.

The Greater Plantain is very similar to the other one but has bigger leaves - this is the one you see creeping up through cracks in the pavement. The Water plantain which grows in shallow water and the muddy banks of streams and blooms from June to September, is the only plantain that needs bees for pollination, the others pollinate by the wind. The Sea Plantain grows on the sea shore and shaled banks.

A lot of these plantains can be eaten in some way, but do not eat them unless you know what you are doing. Some have tender leaves that can be eaten raw and older leaves can be boiled and steamed. Some can be used in the making of risottos and other have good amounts of minerals in them as well as some other medical uses. Some of the leaves can be rubbed on nettle and insect bites.

Martin Slinger

Not the End of the World

Since I became interested in conservation work, nearly ten years ago, I have read many books on the subject. Unfortunately, a lot of them are of the doom and gloom category and, although they highlight vividly the problems the world is facing, can leave one feeling the problems are so great that nothing we do will make any difference.

The book of the above title by Hannah Ritchie is a genuine breath of fresh air and optimism. Like the book "Green Energy Without the Hot Air," which I mentioned a few months ago, she collates facts and figures before arriving at considered conclusions. All too often you hear statements based on wrong interpretation of data, sheer prejudice, or protection of vested interests.

Globally, society can pull together to solve problems quickly. The ozone hole is well on the way to mending after the global ban on chlorofluorocarbon gases, lead has been removed from petrol, acid rain from sulphurous coal burning solved and we developed a vaccine against Covid19 in record quick time. The climate crisis is potentially the worst problem we have ever faced and, although this book highlights many good things we have our collective heads buried deeply in the sand.

Much is made of the need to reduce carbon emissions to keep global warming to manageable levels. This will only be achieved by making our society sustainable. Human beings only account for 0.01% of the biomass of the planet but we have a disproportionate impact on our environment. We represent 35% of the biomass of all mammals, our livestock and pets 63% leaving only 2% for wild mammals. This means most mammals are destined for our food chain. It takes 50kg of carbon to produce 100g of beef protein, 6kg for 100g of chicken and only 0.4kg for a 100g of pulses. Seventy-five percent of our agricultural land is used for livestock grazing or growing their feeds. Twenty-four percent of global emissions are from our food industry.

I enjoy meat but given the data above I find it impossible not to significantly cut down my consumption. Plant based alternatives are getting better all the time and if they are significantly cheaper? Some will argue, me included that to make the alternatives taste and feel like meat will involve much processing. The pros and cons of that is another story!

A final thought is to focus on things that really will make a difference. After a golf competition recently, the away club captain proudly announced their club had banned the use of plastic tees. This was just after we had consumed a dinner of minced beef served as cottage pie. Where is the true carbon saving to be made I wonder?

Paul Baxter



Can you help?

An interesting request for information has been sent in the hope that someone may be able to help. Mrs Sally Powell, nee Bucke, came to Painswick with her mother, Mrs Elizabeth Bucke, during the war. This was in 1943/44. Her mother was an SRN Sister and, in Sally's words, 'got a job in one of the girls' schools in Painswick with me as a young pupil. I think she was the matron.'

Sally is hoping that someone may have some knowledge of the school, any photographs or even a record/memory of her mother being the matron. Her own memories are limited to 'a huge assembly hall with oak panelling round the walls.' Does anyone have any information or memories which may be helpful? Might this have been the girls' school which was in Court House during the war (and which Queen Mary visited no less)?

Do get in touch if you are able to help in this quest.

Carol Maxwell




Kate Rich
walks Painswick's
'Diamond Dogs'
Stimulating Dog Walks
that include the best 'sniffy places' to
delight your dog


Also: Bespoke Dog Sitting Service
Tel: 07785 562616
www.katerich.co.uk

Resthaven offers 24 hour residential and nursing care set amidst some of the finest countryside in Gloucestershire with panoramic views over the Painswick valley.

For more information please call **01452 812682** or, visit:
www.lillianfaithfull.co.uk/resthaven

Resthaven is part of the charity Lillian Faithfull Care
Registered Charity No: 1122183





“The Restoration of the Stroud Canal - Whitminster to Stonehouse” is the title of a talk to be given by Robert Toseland at Yew Trees WI Meeting on Tuesday 22nd October. I am happy to report that as it is likely to be of interest to many Painswick residents the meeting will be open to all. Male and

female guests will be most welcome at 7.30 pm in the Church Rooms.

Yew Trees WI is not just about our monthly meetings. A challenge has been sent out to Sheepscombe WI for a skittles match in Painswick Centre. In the past these matches have always proved to be friendly and fun and we trust this will be no exception! Jane Rowe is already asking us for ideas for a theatre visit in February and members of Yew Trees are eligible to join the extensive and varied programme of events organised by the Gloucestershire Federation of WIs. So, ladies why not come along and give us a try?

Celia Lougher 812624

The Big Ask

Revd Sarah and the churchwardens are keen to know what you think about your parish church and its place in the life of the community so they have come up with a questionnaire to help your Parish Church Council (PCC) plan for the future.



Called ‘2024 THE BIG ASK’, the survey should take no more than 10 minutes to complete. This is an opportunity to have your say and to encourage your friends, neighbours and other members of your church to do the same. Don’t miss out, speak out!

The link to the questionnaire is here:
<https://tinyurl.com/mr49vsp6>

Please ask your churchwarden for a paper copy if you would find that easier.

Bea Hyde

Painswick Music Appreciation Group

PMAG got off to an impressive start to the season on Thursday September 19th courtesy of Ann Williams and her new idea comparing several different performances on record of the Elgar Cello Concerto, his last major composition which after a slow start, developed into one of the cornerstones of the repertoire and the premier English work in that milieu.

From her personal CD collection she chose six performances beginning with a 1928 recording featuring the first inaugural performer Beatrice Harrison under the baton of Sir Edward Elgar himself. She progressed through the decades, Jacqueline du Pre (1972) conducted by her then husband Daniel Barenboim (very much still with us), Julian Lloyd Webber in the 1980s, Stephen Isserlis in the 1990s, Truls Mork in the 2000s, and finally right up to date Kanneh-Mason and Sir Simon Rattle in 2015. Ann asked everyone to give their preferences and as might be expected Ms du Pre came out on top. All the others had their advocates and received honourable mentions including Beatrice Harrison, in spite of a vastly inferior sound quality and a noticeably faster tempo. This was presumably what the great composer wanted.

Ann completed her presentation with an enjoyable and contrasting miscellany of CDs with extracts of a Verdi overture, a Mahler symphony, a Bartok ballet, Rodrigo’s Concerto de Aranjuez, Gershwin’s Rhapsody in Blue and The Lark Ascending.

Next meetings 2:30 PM in the Town Hall:-

Thursday October 17th	DVD Holst The Planets 2024 Proms and lesser known works
Thursday October 31st	DVD highlights David Oistrakh, 3 Tenors etc John Herbert

Michael Grey

B. Pearse Carpentry
" A complete woodworking service "

All internal / external work
Bespoke Joinery supplied and fitted
Staircases, kitchens, wooden flooring
Timber framed buildings / extensions
Traditional cut Roofing
Renovations / Alterations

Ben.pearse@hotmail.com
07791 639 635

Computer or Tablet Problem?

Computer repairs & upgrades
6 month health check ups
Plain speaking tuition
Internet security
Remote support
Wi-Fi solutions
Easy backup
Hints & tips
Advice
Help


★★★★★
5 star rating

Matt Hughes
07740 167318
www.pcprop.com
£45 ph Est.2003




REGENCY VETS

Proudly independent, caring vets for
Cheltenham and surrounding areas
01242 781381 Home visits
available on request

www.regencyvets.com

Simon Gyde
Carpenter and Joiner

City & Guilds
Purpose Made Joinery
Restoration Woodwork
General Building Services

07768.173726 simongyde@yahoo.co.uk

FRASER HALL

MINI DIGGER WORK: ALL TYPES
GARDEN MAINTENANCE
DRIVEWAYS & FOOTINGS
AGRICULTURAL FENCING
TREE SURGERY
SEASONED FIREWOOD



M: 07766 132 903

FULLY INSURED
BASED IN HARESCOMBE

**Julian Telling
Garden Services**

New Service - Green Waste Collection
We supply 1 bulk (tonne) bag
You fill it, then call for collection - £20.00

Tree Felling, Pruning & Maintenance
Fencing & Fence Repairs, Lawn Cutting,
Strimming, Turfing, Weed Control, Hedge
Cutting & Shaping, General Garden Clearance
Gutters & Patios Cleaned, Powerwashing

07895 224863
Juliantelling@yahoo.co.uk



A big raffle win – it could be yours

There is a wonderful and rare opportunity to win something rather special during the next few weeks. Readers will be aware of Greg Thatcher’s presence in the churchyard every year since 1991 where he meticulously draws the yew trees. His resulting artwork has earned him an international reputation, all based on his Painswick yew drawings, and the drawings in turn have both gained value and given Painswick an enviable image.



This year Greg has very generously given a print of one of his drawings to Painswick’s Longfield shop in Bisley Street for it to be offered as a raffle prize – and that is definitely an awesome prize. Our Longfield shop is in itself something of a little gem and part of an outstanding Gloucestershire charity which supports both adults with life-limiting illnesses and their families.

Tickets for the raffle will be on sale in the shop where the framed drawing can be seen from early October. At £3 per ticket or a special offer of a strip of five for £10 this is a golden opportunity to win a precious, locally focussed drawing but also to contribute to such a very worthwhile cause. The prize draw will be made during Goodwill Evening, Friday 29th November. Do go in and

participate. Your contribution is so important and you could win!

Carol Maxwell



Vivaldi and Pergolesi concert in St Mary’s

Painswick is very fortunate to be hosting the brilliant Standish Consort and Ensemble La Notte for a fabulous concert of music by Vivaldi and Pergolesi on Saturday October 12th at 3pm in St Mary’s.



Standish Consort is a chamber choir of around 20 members founded by the Oxford Alumni Society of Gloucestershire in 2022, and rapidly established itself as one of the finest choirs in the South West. Its director is Mark Wilson, who is also Director of Music of Pembroke College, Oxford and leader of Ensemble La Notte who specialise in Baroque music.

Pergolesi’s Stabat Mater, composed when he was just 26, is a true masterpiece, originally written for a boy and male alto soloist. Sadly, it turned out to be his swansong, as he died shortly after its completion from tuberculosis. In this concert, it will be performed in its entire, original form accompanied by Ensemble La Notte, with Jenn Thorne (right), soprano, and Mark Wilson (left), who in addition to his other roles, is an outstanding counter tenor. Vivaldi wrote three settings of the Gloria of which this is by far the most famous and popular, comprising lively short movements for the chorus and deeply moving solos. It dates from 1715 when he was employed at the Pieta orphanage for girls in Venice, and originally, the girls sang all four chorus parts as well as the solos.



It promises to be a wonderful concert, and tickets, priced £15 in advance and £17 on the door for adults, £5 for children aged 12 – 17 and under 12s free, are available from www.ticketsource.co.uk/standish-consort or from Chris Swain egswain@btinternet.com

Chris Swain

Exedra Nursery

Specialists in perennials
David Austin Roses
Climbers, alpines, shrubs & herbs
Peat free compost
Gardening accessories & gift vouchers

PAINSWICK ROCOCO GARDEN
OPEN TUES - SUN 10 - 4
07487 537026

ALL STONEMWORK LTD
EXPERTS IN STONE

Drystone Walling; new and restoration
Stone repointing; including lime mortar
Mullion Windows Restored
Any stone repaired or replaced
Local masons with 45 years experience

01452 728949
alan@allstonemasons.com
TEXT / CALL 07823 506499

Your local area electrician

MJBoon
Electrical Ltd

07773 626241
matt@mjboonelectrical.co.uk
www.mjboonelectrical.co.uk

- Free estimates and advice
- All aspects of electrical work undertaken

NICEIC
APPROVED CONTRACTOR

Painswick Surgery Patient Group (PPG)



At the time of going to press a meeting with the Practice was pending so we encourage you to ask through painswickppg@gmail.com for further news from that event. Or, in due course, read the minutes of that meeting on the Practice website: <https://www.painswicksurgery.nhs.uk>

Core Group Meeting

However, we met on a patients-only basis recently having reached our maximum numbers for the first time ever – 12 volunteers. We now have a considerable range of expertise to draw on with members' backgrounds including General Practice and editorial work for the Lancet, in-depth pharmaceutical and IT industry experience, higher education, theatre nursing and Addiction Psychiatry. New members will, despite this, be finding that coming to understand the complexity of the current NHS in England and its management can be a long journey.

The meeting was largely to prepare for the later full meeting with the Practice with some attention to digital developments and a wide ranging discussion of how we could build our ability to help the Practice thrive.

Want to Help Make the NHS App Better?

In the Patient Group we're not very impressed with the NHS App! Click [here](#) if you'd like to take an opportunity to join the NHS App's User Research Participant Panel where your input could help shape the App to better meet everyone's needs. You'll need to complete a short survey about yourself and your health experience, following which you'll be invited to contribute to research that is relevant to you.

111 for Mental Health too

The NHS 111 service <https://111.nhs.uk> is now offering online help for people in crisis with mental health problems.

More missed appointments!

The Practice have given us these figures for August. Sadly, an even higher number of no-shows than July with 20 GP appointments and 59 Nurse/HCA appointments missed and some were for 30 mins. Buck-up people! Keep a calendar on the kitchen wall – a dementia society one perhaps!

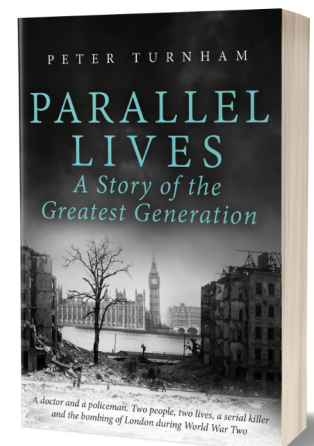
David Perry, Chair

Peter's latest novel

Readers may recall an article a few years ago about local author, Peter Turnham. For him, writing had seemed initially an unlikely step to take and indeed it came about purely as the result of an accident which resulted in Peter being rendered totally immobile for several months. He decided to try writing a novel, a completely new exercise, and, despite early misgivings about his ability to achieve an acceptable outcome, he discovered it presented no problems and was in fact a real joy.

Peter developed his own style of writing and his first novel duly appeared – and was very well received. More followed with amazing success, worldwide in fact. Five novels, including a trilogy, have now sold in various formats via Amazon and orders from bookshops, and, according to his wife, Carol, it amounts to 'a couple of hundred thousand'.

Now novel number six has just been published (self-published), available in paperback and hardback. 'Parallel Lives – A Story of the Greatest Generation' is the story of two ordinary people living through extraordinary times in 1939. Although essentially fiction the events described are based on real occurrences and the story, truly inspirational, is ultimately about the triumph of the human spirit as represented by the two main characters.



This is a powerful story, thought-provoking and moving, and written by a local author. It can be bought via Amazon and also ordered from Waterstone's bookshops. If you like a good read, this is for you.

Carol Maxwell

**Paul Morris Builder
Limited**


Extensions - Renovations
New Builds
Kitchens & Bathrooms
Landscaping
Electrics - Plumbing

01452 814524



07818 087375

paulmorrisbuilderltd@gmail.com
www.paulmorrisgeneralbuilding.co.uk



GODDARD'S GARAGE
Cheltenham Road, Painswick

- * Full servicing & repair facilities
- * MOT preparation & repairs
- * Private hire - taxi
- * Petrol / Diesel / Tyres / Exhausts
- * Paraffin / Coal / Calor Gas
- * Car valeting
- * Air conditioning

Personal attention for your car

01452 812240
goddards.garage@hotmail.co.uk

GROUNDWORKS - DRAINAGE
EQUESTRIAN WORKS
LAKES - PONDS - WATER FEATURES
FENCING - DECKING - HEDGING
DRIVEWAYS - PATIOS
TRADITIONAL BUILDING WORK
ALL PASSIONATELY UNDERTAKEN

GROUNDWORKS LANDSCAPING

BLC
BUILDING PROFESSIONALS

**PLEASE CONTACT
BEN LIVING**
01452 812036
07702 984711
enquiries@blc.uk.com
www.blc.uk.com

Arts and Crafts and Cotswold War Memorials



We welcomed new and old members back to the start of the new season of talks for the Painswick History society, looking forward to a talk on War Memorials in Gloucestershire by Kirsty Hartsiotis.

The earliest memorial was from the Boer war in the cathedral from 1902, designed by Christopher Whall who specialized in stained glass windows and introducing the Arts and Crafts movement into the Cathedral.

We were then introduced to the more well-known types of memorials from the 1st World War, with pictures of temporary memorials in Chipping Campden from 1916 and then commissioned examples from 1917, of which there are over 600 in the county. Many of these have Arts and Crafts influence due to members living in and around the Cotswolds. Examples being Edwin Lutyens designing memorials in Miserden and Nether Swell in 1921.

Two groups grow from this movement, doing monuments and plaques, with the society exhibition in 1916 showing some of the designs. Other types of memorials were also highlighted with 10 memorial halls and hospitals in Stroud and Cirencester.

Many communities had 2 war memorials, one in a prominent place and another in the Parish church. An example was shown of Minchinhampton where the designer was Sidney Bunsley, his family being from Sapperton. The lavishness of the memorial was dependent on funds raised and larger memorials were often paid for by families who had lost sons to the war.

We were shown various memorials from around the county designed by well-known members of the movement, including Ernest Gimson at Fairford, Griggs at Painswick and Charles March Gere specialising in screens in churches (he resided in Holcombe house).

Another unusual memorial was the water troughs, 1917/18, found in Oakridge Lynch dedicated to a particular family and the men of the village who died during the war, designed by Alfred Powell who was a resident in the village at this time.

The talk finished with a brief nod to the WW2, with a clock tower erected in 1951/2 in Nailsworth designed by local architect Peter Falconer, son of Thomas Falconer who was part of the Arts and Crafts movement.

An informative and interesting talk that showed us more than the stone memorials that we all know and whetting the appetite to explore further into this local group of crafts men and women.

Karen Goddard

Revive Beauty
CHRISTMAS SHOPPING EVENT
 AT THE THREE GABLES CENTRE, PAINSWICK
WEDNESDAY 13TH NOVEMBER 2024
POP IN BETWEEN 4.30PM AND 6.30PM
 KICK START THE FESTIVE SEASON WITH EXCLUSIVE TREATMENT OFFERS
 A FIRST LOOK AT THALGO CHRISTMAS KITS
 STOCKING FILLERS
 GIFT VOUCHERS
 BEAUTIFUL GIFT SETS
 MULLED WINE & MINCE PIES
 LEARN ABOUT NEW TREATMENTS ON OFFER IN THE CLINIC WITH MICHELLE, INCLUDING EAR WAX REMOVAL.
 MEET ABBY FROM THALGO & DISCUSS SKIN CARE
 REVIVEPAINSWICK.CO.UK

BEACON
 BAR & KITCHEN
BREAKFAST (Wed - Sat)
LUNCH (Wed - Sat)
SUNDAY LUNCH
DINNER (Fri and Sat only)
FULLY LICENSED BAR
COFFEE and CAKE
 Available to book for
WEDDINGS PARTIES WAKES
& GENERAL GATHERINGS
01452 812180
beacon-bar-kitchen@outlook.com
 Painswick Golf Club, Golf Course Road,
 Painswick, Stroud GL6 6TL

Unique
GLASS
 Solutions
Bespoke Architectural Glass
Glass Balustrades
Shower Screens
Glass doors and Screens
Splashbacks
Juliet Balconies
Glass Canopies
Bespoke Mirrors
 Painswick based
 07717 741 275
 Simon@uniqueglasssolutions.co.uk
 uniqueglasssolutions.co.uk



In October: Wick-Flix Presents: Breakfast at Tiffany's

Step into the glamorous world of 1960s New York City with Breakfast at Tiffany's!

Breakfast at Tiffany's is a romantic comedy-drama centered around Holly Golightly, a charming and eccentric young woman living in New York City. Played by Audrey Hepburn, Holly is a socialite with a free spirit, known for her glamorous lifestyle and mysterious past. She spends her days drifting through the high-society scene, living off the generosity of wealthy men, while dreaming of a better life filled with luxury.

Holly's world begins to shift when Paul Varjak (George Peppard), a struggling writer, moves into her apartment building. As the two become close, Paul starts to unravel the real Holly beneath her carefree facade—a vulnerable woman hiding her true emotions behind a mask of glamour and detachment. Together, they navigate the complexities of love, identity, and the desire for genuine connection in a world preoccupied with wealth and status.

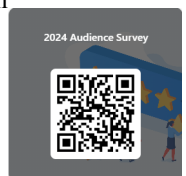
The film, based on Truman Capote's novella, beautifully captures themes of self-discovery, friendship, and romance, set against the backdrop of 1960s Manhattan. Filled with iconic moments, including Holly's famous visit to Tiffany's jewellery store, it remains a beloved classic in cinema history.

We'll be serving cocktails alongside the usual drinks - why not make it a special occasion and dress up in your best bib and tucker - cocktail dresses and suits will be de rigueur.

Book your tickets in advance here: <https://www.eventbrite.co.uk/e/wick-fl ix-breakfast-at-tiffanys-tickets-1017346499767>

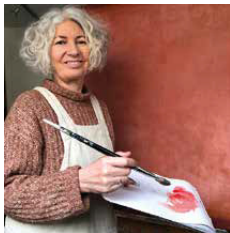
Our final film for 2024 will be:
 Friday 8th November: Fly me to the Moon

We're conducting an audience survey to find out more about what people would like to see at Wick-Flix. We'd be really grateful if you could take a few minutes to complete this survey. <https://forms.office.com/r/Kw4hXN250B> or scan the QR code.



Don't miss the Arts Trail

The annual Arts Trail in the Stroud district has been running for some years now and is without doubt a real reflection of the abundance of outstanding artists in the district. Painswick certainly has a very creditable place in the history of the arts world and, continuing to the present, we have a plethora of artists working locally, displaying an amazing range of skills and talent in their chosen practices. For this year's Arts Trail Painswick artists will be working on and displaying their various pieces in Painswick over two weekends.



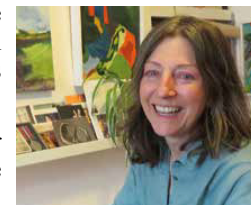
Eight of Painswick's artists will be included this year, each presenting their own individual style of artwork. Ange Mullen-Bryan (right), who specialises in contemporary landscape paintings on locally sourced coloured linens, will be working in her usual work studio in the Art Studio in the Painswick Centre. Jane Garbett (left) is a contemporary abstract oil painter concerned with the alchemy of colour within simple compositions and she will be in her own art studio in Vicarage Street.



Back in the Painswick Centre you can visit the other six artists, in the Beacon Hall during the first weekend and in the Cotswold Room for the second weekend. Sarah Middleton produces watercolours which she describes as 'quiet paintings'. Aly Lloyd is a figurative artist whose work generally focuses on modernist representations of women. As a figurative artist painting people in oils Howard Mason's work reflects his interest in individuals' expressions, feelings and moods.



Nadia Ryzhakova (left) describes her artwork as abstract and decorative using acrylic to produce organic and natural-looking images based on nature and childhood. Linda Davies (right) paints the immediate surrounding landscape and particularly reflecting the impact man is having on the natural environment. Working with abstract shape and form, Sue Cridland's artworks are constructed as paintings, collages using acrylic, felt, thread and other textiles.



This is a wonderful opportunity to see some of our local artists demonstrating their various outstanding skills, to see some of their work on display and to purchase some original artwork. The venues will be open 11.00am-5.00pm, Saturday and Sunday 12 /13 October and 19/20 October. Do go along and enjoy some truly amazing local talent.

Carol Maxwell

Probus Club Report

On Thurs 5th Sep 2024 Club Vice-President Nick Slader introduced the speaker, Sir Alistair Macduff by outlining his illustrious career and his recent exploits as an after-dinner speaker and cruise-ship lecturer.



Sir Alistair's excellent talk was interesting, informative and delivered with the aid of brilliant visual aids. He spoke of the pre-trial meetings of the Allied leaders, which resulted in the establishment of the Nuremberg Trials, and the backgrounds of the legal advisors and lawyers who presided at the cases. He focussed on eight of the twenty-one defendants, outlining their involvement in Hitler's hierarchy, their conduct during the hearing, and the outcomes.

The backgrounds of two of the most senior legal advisors were particularly poignant, as both were Jewish lawyers originally from Lviv, in current day Ukraine; Raphael Lemkin coined the term 'Genocide', and Herscht Lauterpacht was the creator of the 'Charter of Human Rights'.

Mike Steed

On Thurs 19th Sep 2024 Mike Bottomley re-visited Painswick to tell the rags-to-riches tale of Al Bowlly whom Mike dubbed as Britain's first pop-star. Bowlly was born in 1898 to a Greek father and Lebanese mother in Mozambique. His early years were spent in Johannesburg, later opening the door to British citizenship. From the tender age of 8 he was employed in a barbershop and a succession of other odd jobs. He yearned for a musical career so he taught himself to sing and to play the ukulele, banjo and guitar.

Between 1923 and 1927 he joined a series of bands travelling around Europe to the Far East, funding his transport from his earnings. At least once he was sacked over a professional musical difference with an employer about jazz style. On his return to the UK he gained fame as a jazz singer, crooning with the Savoy Hotel house band. His signature tune in 1929 was "Brother can you spare me a dime", which paved the way to a rewarding career, performing live and recording more than 1,230 tracks between 1927 and 1941.

Sadly, his career was stopped short by a German parachute bomb in 1941 which killed him outright.

Henry Hall

**PAINSWICK
CURTAINS & BLINDS**

Vicki Moore

Beautiful, quality
curtains, blinds and soft furnishings
Custom made by hand

01452 810707
07810 646714

vickimoore@gmail.com

**LARWOOD
GARDEN SERVICES**

MOWING AND LAWN CARE
WEEDING, PRUNING AND PLANTING
HEDGE CUTTING AND CLEARANCE
FENCE AND SHED REPAIRS

TRUSTED LOCAL COMPANY, ESTABLISHED 1998.
FOR A FREE ESTIMATE CONTACT NEIL ON:

07816 496087

ENQUIRIES@LARWOOD.NET

Cherry Tree Glamping

Four beautiful and fully-equipped lodges each with a hot tub on the veranda.
Adjacent 2 acre campsite with 19 electric hook-up points and huge communal area.

Available individually or either site exclusively for weddings, special birthdays or family get togethers. Showers and toilets.

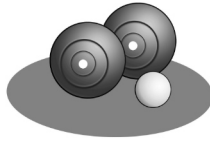
Please call Bev: 07717 721213
www.cherrytreeglamping.co.uk

Painswick Sports

assembled by John Barrus

Inter Street Bowls Competition

During the summer months teams from many streets or clubs have been battling it out on the bowls lawn at Painswick Centre.



This year has seen very competitive entries and definitely a relaxed atmosphere copied from Australia where Bowls is a major sport named "Bare Foot Bowls" ie Kick off your shoes after work!

The pictures illustrate the wide range of support and participation which resulted in Kingsmill Lane winning and the Badminton rollers a close second



Annual Championships

Painswick tennis club held their annual club championships on Saturday 1st September at Broadham. We had the adult and junior finals running along side each other. There was a great crowd of supporters enjoying the tennis and the sunshine. Nigel Barnett (President) presented the prizes. Thanks must go to Adrian McDowell and Ness Fair for organising. 🎾



- Ladies Singles -
- Mens Singles -
- Ladies Doubles -
- Mens Doubles -
- Mixed Doubles -
- Girls Under 12 -
- Girls Under 14 -
- Girls Under 18 -
- Boys Under 14 -
- Boys Under 18 -

- Sophie Rees beat Hope Gordon
- James Barnett beat Romeo Tobias
- Sarah and Hannah Scott beat Ness Fair and Laura Gelder Robertson
- Jamie Morgan and Henry Scott beat Andy Rodda and Marc Williams
- Sophie Rees and Jamie Morgan beat Hannah and Henry Scott
- Grace Leaver beat Sophie Clifford
- Arianne Harbord beat Chloe Harbord
- Katie Harbord beat Olivia Deshais
- Niall Walker beat Aahan Ghosh
- Elliot Ransome beat Romeo Tobias



James Barnett winner of the mens singles with runner up Romeo Tobias



Left to right: Laura Gelder-Robertson, Ness Fair, Sarah Scott, Hannah Scott, Sophie Rees and Hope Gordon.



Henry Scott & Jamie Morgan, Andy Rodda & Marc Williams.



**Professional Ironing,
Dry cleaning, Laundry,
Repairs/Alterations
& Shoe repairs**

COLLECTION & DELIVERY AVAILABLE

**Tel: 07952006820
www.ironeasy.biz**



LIAM PHIPPS

General Builders & Stone Masons
'The complete building service'
Extensions, Renovations, New Build
Carpentry
Roofing
Kitchens

**Liam: 07540 246133
liam.phipps@hotmail.com**

**PAINSWICK
HOME & GARDEN**

Renovation & Maintenance

- Lawns, hedges, fences, borders
- Landscaping, paving, stonework
- Bespoke-built log stores & bin stores
- Decorating, home repairs & lots more!

Find Us on Facebook **Call: 07532 111114**
www.painswickhomeandgarden.com

Bat 4 Barney

Painswick Cricket club hosted a charity cricket game of Sixes in August named, 'Bat 4 Barney', to raise money for the Barnaby Webber Foundation. 19 year old Barnaby (known as Barney) was a keen cricketer and student at Nottingham university and was tragically stabbed to death in Nottingham last summer along with Grace O Malley Kumar and Ian Coates.

As a parent, like many people, I was shocked by this horrific tragedy. Both our children are part of the Painswick cricket club and our daughter captains the ladies' team and through her cricket links is a friend of Barney's younger brother, Charlie. This young man is now facing a future without his hero older brother.

My daughter and I discussed how we could help support the families affected and the foundation so that Barney's legacy is celebrated and remembered. Barney being a fantastic batsman and bowler, we came up with 'Bat 4 Barney' and set about planning a day of cricket to raise funds. The reaction at the village club, a club that welcomes everyone of all ages, was amazing.



Support through the cricket community was overwhelming. Our very own Reece Morris, who makes BTC cricket bats for pros here in the heart of Painswick, got behind us and made a custom bat for Charlie Webber to continue Barney's legacy and 'Bat 4 Barney'. Luke Woolway, senior club coach, and Andy Barnard, chairman of the club, helped promote and organise 8 teams for the day.

The sun shone and the day could not have been more beautiful. An amazing turnout of players, supporters and helpers joined in. The BBQ was fired up, joined by a fantastic cocktail van, DJ and our very own 'Box Coffee', Lucy John who donated takings to the foundation.

The event drew much media attention and featured on BBC radio and ITV covered the day. The teams included a 'Dads & Lads' side and the 'Worn outs', featuring some ex MCC players. Money was raised through incredible donations to our raffle with The Painswick pledging a generous prize, but also offering to host The Webber family. Donations came from The Oak, Rococo Garden, Gifford Circus, 22 yards cricket centre and a fabulous Dunkerton's Cider hamper, won by a very happy club cricketer!

Total raised was just over £1,400, playing a game Barney loved and cherished. We hope to honour his memory in future events and support not only the foundation but this wonderful game at village clubs across the country.

The foundation, created by the family, has two purposes; firstly, to provide support for young people aged 18 and under facing physical, mental, emotional or social challenges; secondly, to support grassroots cricket clubs through the provision of essential equipment needed to encourage boys and girls under 18 to get involved in playing cricket.

If you would like to donate to the Barnaby Webber Foundation you still can go to Barnabywebberfoundation.co.uk

Lizzie Holohan

Steve Pegram

FAMILY TREE
FUNERAL COMPANY
No.1 Middle Street • Stroud GL5 1DZ

A family-run independent business
with a fresh approach to funerals

End-of-life planning and support

0 1 4 5 3 7 6 7 7 6 9
email: contact@familytreefunerals.co.uk
WWW.FAMILYTREEFUNERALS.CO.UK

SALLY ELLWOOD
LIME

Lime wash, pointing, render and plaster
for period and listed buildings.
Art and design.
Tuition and consultancy.

07940 108 333
www.sallyellwood.com
info@sallyellwood.com

CENTRELINE

STONEMASONRY
HISTORIC
BUILDING
REPAIRS
& ALTERATIONS

01452 813892 OR 07967 316038
WWW.CENTRELINESTONE.CO.UK
Fairfax House, Vicarage Street, Painswick, GL6 6XS



Painswick Cricket Club - Promotions and allsorts!

So with the league programme completed for all our Saturday adult teams we conclude a tough but overall successful and progressive 2024 season.

First Team

A final, fine and hard fought victory away at champions elect Thornbury ensured that our fantastic first team squad finished 5th and comfortably maintained their WEPL Premier 2 Glos/Wilts status. Against Thornbury, Painswick produced some top batting performances, Luke Woolway (51), Keegan Van Rensburg (61no) and Matt Connelly (40 runs) helped create a decent total of 232. Thornbury were always close to the run rate but lost wickets regularly but with their classy Gloucestershire county star Chris Dent at the crease there was always danger. Fortunately for Painswick the pressure told in the end and an attempted risky second run saw Thornburys innings close 20 runs short. A fantastic bowling and fielding display by all the Painswick players enabled this victory with Jack Hobbs taking 4 wkts and Matt Connelly 3. A special mention to Reece Morris for a tremendous caught and bowled.

Second Team

The seconds also won their final match against our old friends Eastcombe CC by 39 runs. Painswick scored 191 with steady knocks by Andy Barnard (44) and Nath Fagg (48). Eastcombe seemed to be on course for a while, however Fagg then repeated his bowling efforts from the previous week (when he took 5 wkts) and proceeded to take 6 wkts for 30 runs of his 8 overs. Eastcombe finished on 152 all out. It appears the seconds have finished 4th but with league restructuring in the air it is unsure where they will be playing next season.

Third team

A fantastic season for the thirds under the wily and wise leadership of Noel French. The side finished top, promoted and champions of Stroud Div 2. Their final match was a top of the table clash with Tetbury 3rds who proved to be a tough nut to crack. Decent batting especially from Phil Higgins (108) and Magnus Hall (39) saw Painswick reach 205 runs. Tetbury fell just short scoring 200. Noel and promising youngster James 'where's my phone' Nottingham were the pick of the Painswick bowlers taking 3 wkts each.

A further wrap up of the cricket season will be available in November.

Painswick Community Support

Community Lunches

A big thank you to all the community groups who have offered to host a community lunch on Mondays 12-1.15pm at the Town Hall this Autumn and Winter. The lunches will run from 28th October until 9th December and after Christmas from 6th January to 24th February. Do come along for some delicious homemade soup, bread and cheese, followed by tea and coffee and support the range of community groups taking turns to host. Cash donations on a pay as you like basis.

A huge thank you and good luck to Abigail!

As a group, we would like to thank Abigail Smith for all that she's contributed to Painswick Community Support since Covid, when she was one of the people instrumental in setting up this group. She will be very much missed by us, as well as by many others in Painswick. We wish her, Gary and Torney all the very best in this new phase of their life in Hartpur.

St. Mary's Sherlock Supper October 24th

We are pleased to support St.Mary's by providing a family supper at the Church Rooms on October 24th at the first of their half-termly family events. More details from the Beacon Benefice office beaconbenefice@gmail.com

Finally, we would like to let everyone know that, in collaboration with Matt Reekiew-Black, we will be offering a Winter Community Supper on Monday 2nd December at the Church Rooms. More details about how to book will follow in due course via The Painswick Beacon and social media.

If you need help or support or have any questions, please call or email us (mobile: 07956203087, email: painswickcommunity@gmail.com). Our phone is manned 7 days a week from 9am to 5pm.

*Delyth, Hannah and Louise
On behalf of Painswick Community Support*

Painswick

Music



Society AGM

Our AGM will be held in the Church Rooms on Saturday November 9th at 7pm. Please put the date in your diary. The evening will follow the usual pattern of a short business meeting, a recital given by a highly talented young Gloucestershire cellist, Matthew Le Maistre, and then a social. We are delighted to welcome anyone who would like to come along and find out about our concerts. There will be more information in the November edition of the Painswick Beacon.

Sue Pack



The Library Book Club will next be meeting on Monday 14th October from 1.30 - 2.30, to discuss *Honor* by the highly acclaimed author Elif Shafak.

Looking further forward we are planning to meet on 11th November to discuss *Before the Swallows Come Back* by Fiona Curnow and then in December *Sweet Sorrow* by David Nicholls (date to be decided at the next meeting).

We are very pleased that our membership continues to grow and we have a very robust number of regular members. If you wish to join us please come along to one of our meetings or contact me for further information by email:

painswick.librarybookclub@gmail.com

Pat Andrew

Friday Club

WOW! What an exhilarating and exciting time Club Members have enjoyed during the past few weeks! On the 6th September we had a splendid lunch in the Club House at Painswick Golf Club. Fish and Chips followed by Eton Mess seemed to be the popular order of the day! On the 18th September we set off to Saul Junction for a cruise on the Sharpness Canal, operated by The Willow Trust. We sailed on the "Spirit of Freedom" for 2 hours, enjoying tea coffee and biscuits and wonderful scenery. We had a choice of either remaining in the cabin or sitting outside on the decks. For those who chose to sit outside you did need to wear a life vest. We then all clambered off the boat at a scenic spot to enjoy a picnic lunch that had been prepared by the Clubs Committee. Thankfully the sun shone whilst we ate! On the return journey Members were surprised to be asked if they would like to help steer the boat. Several took up the offer and returned with large smiles on their faces whilst the rest of us unlocked our crossed fingers! Everybody had a thoroughly enjoyable day and one they will remember for a long time. The Willow Trust service is incredible.



On the 20th September Helen Plumb, an internationally recognised gemologist, talked to us about the fascinating world of gemstones. She explained the difference between synthetic and treated diamonds and also the different colours of both rubies and emeralds. Also how the Romans created the word "carat" to weigh diamonds. We were all "spellbound" both by her knowledge and the price of larger diamonds!

At our next meeting on the 4th October Vicky Weaver will be talking to us about the importance of a "Bespoke Life" for Companionship and Support. We look forward to welcoming both old and new members to our next Meeting at 2.30pm in the lower room in the Town Hall. See you then!

Mike Kerton

Graham Watts Carpenter and Joiner

Experience in all aspects of construction from project management to the final coat of paint

I am looking for small building/ carpentry projects in the local area

Please call 07850 312984
email alisdairw@gmail.com

ADC PRIVATE HIRE (TAXI)

Andy Cox

01453 755707
07966 235775

All Destinations
www.taxis-stroud.co.uk
adcprivatehire@btconnect.com

St Michaels BISTRO

Lunches: Wed - Sun 12.00 - 15.00
Evenings: Tue - Sun 18.30 - 22.00

tel: 01452 203306
07877 282 446

marinpetre1967@gmail.com

Take-aways available

Regular Village Activities. Please contact Vicky Aspinnall on cvasp.26@gmail.com

Mondays	Gentle pilates. Info from Heidi 07970 262538	Painswick Centre 8.45 - 9.45am
	Improvers pilates. Info from Heidi 07970 262538	Painswick Centre 9.50 - 10.50am
	Beginners/improvers pilates. Info from Heidi 07970 262538	Painswick Centre 10.55 - 11.55am
	Ballyhoo modern dance classes (primary grade modern). Info from Julie ballyhoochalford@gmail.com	Painswick Centre from 3.45pm
	Community Choir. Contact sophie@sophiesterckx.co.uk Term starts on Sept 16th	Painswick Centre 7.00 - 8.30pm
	Short Mat Bowls. All equipment provided. 2.00/session	Town Hall 2.00 - 4.00pm
	Mindful Meditation with Kate. www.kate-beatty.co.uk/07793126234	Painswick Centre 12.30 - 1.00pm
	Painswick Singers. Contact Jean Jones 01452 813545.	Richmond 7.30pm
	Paradise Art Studio evening classes. Contact takepart@paradise-house.org.uk	Paradise House 6.30 - 8.30pm
	Painswick Bootcamp. Details contact Becca Meadows 01452 451505 or info@beccameadowsnutrition.co.uk	Broadham Field Rugby Pitch 7.30 - 8.30pm
Tuesdays	Drawing Classes in a block of six lessons. Info from Hannah Dyson at www.hannahjdyson.co.uk or dyson_hannah@hotmail.com	Church Rooms 10.00 - 12.00pm
	Zumba with Martina 07891 194396	Painswick Centre 9.45 - 10.45am
	Painswick Art Club - restarts on September 3rd. £40/term. Contact Joyce Barrus on 01452 812942	Church Rooms 9.30 - 12.30pm
	Rococo Sprites. See www.rococogarden.org.uk	Rococo Garden 9.45 am
Wednesdays	Strength and Balance class for the over 60s. Contact Trish Tenn on 07956 4666617 or tennpatricia@gmail.com	Painswick Centre 10.00 - 11.00am
	Painswick Bridge Club. Contact Peter Sibley on 812126 or Margaret Wilson on 812305	Church Rooms 6.45pm
	Table tennis. Contact David Harris on 07453 027766. £5.00/person/session	Painswick Centre 7.30 - 9.00pm
	Yoga with Kate. www.kate-beatty.co.uk/07793126234	Painswick Centre 7.30 - 8.45pm
	Classical Pilates Mat Classes with free taster. Contact Jo on 07968 799741 or info@daleypilates.co.uk	Painswick Centre 10.30 - 11.30am
	Strength and Conditioning Circuits. www.lovelifeladies.co.uk	Painswick Centre 12.30 - 1.30pm
	After school art classes. Email classes@painswickcentre.com . Term time only	Painswick Centre 3.45 - 5.15pm
Thursdays	Morning Market	Painswick Centre 8.15 - 9.45am
	St Mary's Mums - for mums, bumps, babies and toddlers. Contact 07833 727701. Term time only	Church Rooms 9.15 - 10.45am
	Nurturing yoga. Contact Kim on yoginikim@icloud.com	Painswick Centre 9.30 - 11.00am
	Vinyasa Yoga. Contact Kim on yoginikim@cloud.com	Painswick Centre 11.15 - 12.45am
	Tai chi. Contact Joe on 07960 753782	Painswick Centre 1.30 - 2.30pm
	Dog Training Club. Contact Fiona Chapman on 01452 812462 or fiona.chapman123@btinternet.com	Painswick Rugby Club 9.30 - 12.30pm
	Qi Gong Classic Exercise - contact Jeff Docherty on jeffdocherty@yahoo.com	Town Hall 9.30 - 10.30am
	Classical Pilates Mat Classes. Contact Jo on 07968 799741 or info@daleypilates.co.uk	Town Hall 5.45 - 6.45pm
	Takeaway Food Night	Painswick Centre 5.00 - 8.00pm
	Fridays	Yoga for Backs. Contact Kim on yoginikim@icloud.com
Ballet with Claire Tracey. Contact BalletClaire@outlook.com		Church Rooms 9.30 - 10.30 am
Painswick Community Hub Café: serving tea, coffee and homemade cakes. All welcome		Town Hall 10.00 - 11.30am
Church Choir Practice. Contact Chris Swain cgsivain@btinternet.com or 01453 822998		St Mary's Church 5.30 - 6.30pm
Classical Pilates Mat Classes. Contact Jo on 07968 799741 or info@daleypilates.co.uk		Church Rooms 11.00 - 12.00pm
Painswick Baby and Toddler Group - Term time only		Youth Pavillion 9.30 - 11.30am
Sundays	Mass	Catholic Church 8.30am
	Quaker Meeting for Worship	Meeting House 10.30am
	Aikido www.gloucestershireaikido.club .	Painswick Centre 8.30 - 11.00am

Village Diary

Please let me know your club and society dates for the diary on cvasp.26@gmail.com

October

Sat	5	Painswick Beacon published		
Tues	8	Morning prayer	St Mary's Church	9.00am
Wed	9	Holy Communion	St Mary's Church	12.00pm
	9	Gardening Club: AGM + Nursery plants - choice rare and unusual - Paul Green	Town Hall	6.45pm ready for talk at 7.30pm
Thurs	10	The Arts Society: The Housekeepers Tale - Tessa Boase	Painswick Centre	10.00 for 11.00am
	10	Friday Club: Outing by minibus to Cheltenham Race Course Station for GWS Railway trip. Pre-book 810878	Stamages car park	
Fri	11	Wickflix - Breakfast at Tiffanys	Painswick Centre	7.00 for 7.45pm
Sat	12	PBCG Work party	TBC	9.00 - 1.00pm
Sun	13	Family Worship and baptisms	St Mary's Church	11.00am
Mon	14	Library Book Club	Library	1.30 - 2.30pm
Tues	15	Morning Prayer	St Mary's Church	9.00am
	15	Cotteswold Naturalists: History of Rodborough Common - Sharon Gardham Enq 07767 914957	Box Village Hall	2.30pm
	15	Plants for Free - lifting and dividing	Exedra Nurseries @ Rococo Garden	10.00am
	15	Local History Society: The Fleece, Westgate Street Gloucester - Rebecca Lane	The Croft School	7.30pm
Wed	16	Prayer and Praise	St Mary's Church	7.00pm
Thurs	17	Painswick Music Appreciation Group: Holst - The Planets - Michael Grey	Town Hall	2.30pm
	17	Painswick Probus: SS Great Britain - Ian Caskie	Painswick Centre	11.00 for 11.30am
Sat	18	PBCG Work party	TBC	9.00 - 1.00pm
Sun	20	Deadline for Beacon copy		
	20	Holy Communion	St Mary's Church	11.00am
Tues	22	Morning Prayer	St Mary's Church	9.00am
	22	Yew Trees WI: Restoration of the Stroud Canal - Whitminster to Stonehouse - Robert Toseland. OPEN MEETING - visitors £4.00	Church Rooms	7.00 for 7.30pm
Sat	26	PBCG Work Party	TBC	9.00 - 1.00pm
Sun	27	Beacon Praise	St Mary's Church	11.00am
Mon	28	Community Lunch - Monday Walkers	Town Hall	12.00 - 1.15pm
Tues	29	Morning Prayer	St Mary's Church	9.00am
Thurs	31	Painswick Music Appreciation Group: Highlights from DVD Collections - John Herbert	Town Hall	2.30pm
	31	Painswick Probus: Crypto Currency (Past present and future) - Ralph Hazel	Painswick Centre	11.00 for 11.30am

November

Fri	1	Friday Club: History of witches and tales of Gloucestershire witches - John Putley. Enq 812942	Town Hall	2.30pm
	1	PBCG work party	TBC	9.00 - 1.00pm
Sat	2	Painswick Beacon published		

PAUL COOKE

COMPLETE GARDEN MAINTENANCE

**MOWING HEDGE CUTTING
PATIOS PONDS**



Free estimates
Phone 01452 813738
Mobile 07702 912392

Established over 20 years



DALEY PILATES

Classical Pilates Classes in Painswick
Mat, Reformer and Open Studio Classes for all levels.
Mat Classes: Wed 10:30am, Thurs 5:45pm, & Fri 11:00am
Classes 1 hour at £10 Free Taster Class

Level 4 Backcare Practitioner accepting medical referrals
Online and On Demand Classes at www.daleypilates.co.uk

Contact: Jo on 07968 799741
or email info@daleypilates.co.uk

Dr Hauschka Organic Facials

Your friends will ask enviously
if you've "had work done..."
But you'll smile secretively,
knowing you look great, naturally.

Book yourself a Dr Hauschka treatment
with **The Organic Beautician**
and treat your skin to the visible difference

text 07961 224560
jane@theorganicbeautician.com

Mention this ad when booking for a free Cleansing Cream
Based in Pitchcombe since 2007

Remember Remember – Fireworks Night!



Friends of The Croft School will once again be holding their fabulous Fireworks Night at the school on Saturday 9th November. There will be hot dogs, hot drinks, and a UV Disco which the children thoroughly enjoyed last year.

Gates will open at 5pm and the display will begin at 6.30pm. Tickets are available via the QR code or there are a limited number at Painswick Pharmacy (correct cash only please). We look forward to seeing you there!

Might you be able to help Friends of The Croft School?

Many of your children and grandchildren have attended or currently attend our wonderful school. Friends of The Croft School (FOTCS) take huge pride in putting on fun events to raise money so that we can add real value to our children's education. In recent years we have funded a new play fort in the playground, a whole new library area in the school, music lessons for year groups, and electronic whiteboards for all classrooms.

Our annual Fireworks Night is a highlight for the children, offering fun and excitement, as well as an important opportunity to raise much-needed funds. However, as we all know times are tough and the costs associated with putting on fundraising events are increasing every year. We have in the past been extremely fortunate to have received donations, sometimes anonymously, towards the costs of putting on big events, for example to help cover the cost of fireworks. We are reaching out to our community to ask for your support. Any donation no matter how small would be greatly appreciated. Every contribution helps us bring joy to the students and provide them with valuable resources.

You can donate using bit.ly/3XtwTrE or please reach out to us at FOTCS@gmail.com, we would be delighted to hear from you.

Thank you for your generosity and support!



The Friends of the Croft Committee

The Stonehouse Community Arboretum



Our next lecture in Painswick will be on 6th November at 2.30pm and given by John Parker (CEO of the Stonehouse-based Arboricultural Association) about his work with the Stonehouse Community Arboretum. This fascinating project is not a conventional arboretum, but rather a long-term environmental and social project, which includes all the trees on public and private land in the urban and rural parts of Stonehouse. Its focus is not just on tree planting, but also places emphasis on the importance of preserving and enhancing the existing trees alongside planting new ones. In this talk, John will present this case study of public and political engagement in tree care, one in which professionals and volunteers work together to improve the lives of citizens through trees.

With the A46 open at last our Painswick Members will hopefully find travelling to our Box Village Hall lecture series somewhat easier. The next Box lecture on 15th October at 2.30pm will be a presentation about the history of Rodborough Common brought to us by Sharon Gardham, Project Officer for Stroud Valleys Project. All lectures are followed by light refreshments. Visitors are very welcome; no booking required - please just drop in. Members pay £2, visitors £5. For more information contact Paul Wyeth;

email CNFCLectureSec.pw@gmail.com or phone 07472 021 517. For a full list of this season's lectures please visit our website: <https://www.cotsnatsfield.club/p/lectures-2024-25.html>

Membership of the Cotteswold Naturalists Field Club is just £25/ annum for an individual or £40 for two people at the same address. For more information please contact Clare Woodman by email CNFCMembershipSec@outlook.com Further information about the Club and its activities can be found on the CNFC website www.cotsnatsfield.club

Sylvia May, Email: cnfcsecretary1@gmail.com

Visit us this Autumn
AT THE FALCON
PAINSWICK

Where locals
 get 15% off* all food, drinks and rooms
 Monday to Wednesday

WEDDINGS & EVENTS - Find out more at
 ROOMS - SEASONAL MENU - thefalconpainswick.com
 ENGLISH WINES 01452 222820
 *T&Cs apply

FIVE VALLEYS
 Friendly and Professional Local Team
 Female and Male Cleaners Available

Regular and One Off House Cleaning
 Office Cleaning - Regular and One Offs
 End of Tenancy Cleaning
 Holiday Let Cleaning
 Deep Cleaning
 Carpet Cleaning
 Oven Cleaning
 Window Cleaning

mob 07516 766689
www.fivevalleyscleaning.com
www.facebook.com/fivevalleysltd

myhealthpal.co.uk
Private Health Insurance
Broker in Painswick

AVIVA AXA
 Bupa Vitality
 The Exeter WPA

You May be Able to Change Insurer and
 Maintain Cover for Pre-existing Conditions

01453 621250
George@myhealthpal.co.uk

PLANNING MATTERS

Information received from the Parish Council

NEW APPLICATIONS

S.24/1485/LBC

Butt House, Butt Green

Replace existing dormer window.

S.24/1565/CPL

Folly Acres, Folly Lane

Proposed construction of the 'artist's studio' as detailed within approved application reference number S.15/1865/FUL which is considered to remain extant

S.24/1554/HHOLD

Stark Hill, Edge

Erection of PV solar array in garden.

S.24/1593/HHOLD

Woodside Cottage, Catswood Lane

Demolition of outbuilding and erection of a single storey side extension.

S.24/1486/HHOLD

Pincot Cottage, Pincot Lane

Erection of a two storey rear and side extension, porch, installation of sewage treatment plant & associated works.

S.24/1484/HHOLD

Butt House, Butt Green

Replacement of existing dormer window.
S.24/1612/HHOLD

Bramfield, Edge Road

Erection of garden store to side of dwelling.

S.24/1662/TCA

Flax Cottage, Vicarage Street

T1 Rowan - reduce crown by 3m and shape to contain crown size. T2 Cotton-easter - reduce crown height by 3m and lateral branches to shape.

CONSENT

S.24/1118/LBC

Rosemary Cottage, St Marys Street

Replace windows and doors. Replacement roof finish to earlier lean-to rear addition, internal alterations and erection of timber garden office

S.24/1107/HHOLD

Greenacres Cottage, Cheltenham Road

Erection of dormer window and balustrade to replace two existing dormers.

S.24/1369/LBC

Upper Cottage, Tibbiwell Lane

Installation of a partition wall at second floor to create a shower room.

S.24/1144/HHOLD

Mirfield, Stroud Road

Erection of garage (revised design following S.23/0631/HHOLD).

S.24/1465/TCA

Southfield House, Vicarage Street

(1) Laurel. Fell to near ground level. (2)

Group of 3 Yews on the side boundary.

Reduce their height to near previous. (4)

Hazel coppice to the left of item and

remove the 6 thickest stems. (5)

Magnolia on the lower lawn. Fell to near ground level.

S.24/1341/LBC

Kings Mill House, Kings Mill Lane

Work to conserve a first floor level window.

S.24/0684/FUL

Londis Store, St Marys Street

Retrospective application for the installation of a refrigeration compressor.

S.24/0871/HHOLD Knapp Corner

House, Knapp Lane

Erection of a garden room.

WITHDRAWN

S.23/2253/LBC

Kings Mill House, Kings Mill Lane

Repairs to existing first floor level window, ground floor fireplace, first floor fireplace.

Property Report

New properties on the market within the main village are again thin on the ground this month. Since the last report the only really new one is 2 Court Cottages, a 2 bedroom mid-terrace cottage, hidden from view in Butt Green (Hamptons, £375,000). Recently listed properties still available though, include two 3 bedroomed properties at 12 Berry Close (Murrays, £325,000) and Star Cottage in Hollyhock Lane (Murrays, £425,000) and the impressive and historic property at Croome House in Bisley Street (Hamptons, £600,000).

There is some choice at Sheepscombe too, where two sizeable detached properties are newly available through Murrays. Spindlewood, available at £850,000, is set in a large garden on the hillside overlooking the village with 4 bedrooms and an attached one bed annexe, while Maryland, set in a quiet area near the village school and offered at £725,000, has 3 1/4 bedrooms. At Longridge, with great views across the valley, Frith Way (Hamptons, £620,000) has some scope for a new owner to tailor the accommodation to their own requirements. In Cranham, Pound Cottage is a detached stone cottage in the heart of the village, surrounded by protected commons (Hamptons, £825,000).

Properties recently going under offer include Cotswold View at the Highlands, Stable Courtyard at Painswick Court and the Old Chapel at Slad (all Hamptons) as well as Hale Bank in Hale Lane and Meadows café in St. Mary's Street (Murrays). Mount Pleasant in Vicarage Street and 4 Berry Close have now exchanged contracts, while 7 White Horse Lane has completed.

The Painswick Feast was once again sponsored by Murrays this year and had a great turnout, despite the weather.



MURRAYS
SALES & LETTINGS

*Leading property agents for the
Stroud Valleys and Severn Vale*

We pride ourselves on our personable and professional approach, offering new and innovative ways to market your home

Contact James or Richard Murray

Offices in Painswick,
Stroud, Minchinhampton
and Mayfair, London



Painswick office: 01452 814655
www.murraysstateagents.co.uk

**WITH YOU
FOR EVERY
STEP**

Sales 01452 812354
Lettings 01242 263559
painswick@hamptons.co.uk

Hamptons
THE HOME EXPERTS

Disclaimer

The Beacon does its best to verify information published, but does not take any responsibility for the accuracy or reliability of information provided by other contributors. Paid advertising is accepted in good faith and we disclaim all liability for goods and services on offer.



**Stepwise Foot
Care.**

Mobile service in the comfort of home

- Medical pedicure.
- Hard skin removal.
- Corn removal.
- Re shaping and thinning of nails.
- Diabetic foot care and more!

Don't struggle alone.
Book now and let me help.

Call: Lizzy 07387 822770

Personal column

Congratulations

To JOSEPH TATE (son of Richard and Caroline, and previously of Edge Road Painswick - now living in Stroud) and his partner ELLEN who were blessed with the arrival of Rowan, a bouncing baby boy, in August. Mother and child doing very well.

Condolences

To the family of JUDITH COURTS who passed away on 18th September whilst on holiday in Canada with friends. Judith's three sons were able to see her before she died. She was an active member of many of Painswick and Pitchcombe's clubs and a few weeks ago was playing golf, tennis and pickleball. A dynamo until the end. Judith will be massively missed by her 3 sons and their families including her 8 grandchildren.

You could help Vicky Aspinall, if you would send information about those you know for whom a mention in the Personal Column would be appreciated cvasp.26@gmail.com

Foodbank

Our next collection will be on Wednesday 9th October. Volunteers will be in the Stamages Lane car park from 10am - 12 noon to receive donations. Please may we ask for some of the following: ketchup or mayonnaise, laundry detergent, squash, tinned potatoes, gluten or dairy free products, biscuits, snack bars, sugar, chocolate spread, razors, shaving foam, cooking oil, jam, marmite, bleach, household cleaning sprays, rice pudding, custard, shower gel, bath foam, Fray Bentos pies.

Thank you to all who are able to support us. Every donation, however small, is very gratefully received.

As always, if you prefer to make a bank donation, you can do so using the following details:

Stroud District Foodbank CIO
Sort code: 09-01-29
Account: 21994911

Thank you!

*The Foodbank Team
Mobile: 07950 651228*

MINI-ADS

Mini-Ads

Primarily for Painswick residents. Text maximum 30 words. Flat charge £6. Free to subscribers for private sales. £6 for business use, holiday rentals. etc.

Provide text, your name, address and contact details with payment in advance. Deadline as for all copy. More info call Peter Rowe, or mail: advertising.beacon@painswick.net

Holiday cottage in Pembrokeshire, close to small town of Newport. Within walking distance of sea and mountain. Sleeps 6. Peaceful garden with parking. Dog friendly. Call Sally: 07749 214152.

Baby Grand 'Squire' Piano. More than 50 yrs old, but in good condition, well maintained and regularly professionally tuned. Free. New owner to collect. Please contact Andrew 07905 955788.

NEXT ISSUE

Publication date
SATURDAY
Nov 2nd 2024

Deadline for all copy
Sunday 20th October

www.painswickbeacon.org.uk
for current issue and archive, the annual directory and village maps.

for editorial attention only use
beacon@painswick.net
or hard copy - preferably typed
Beacon post box - New Street

All copy must include author, address and contact telephone number. Photographs and advertising art work original at 600dpi in JPEG

The Beacon Team

Co-ordinating Editor this month

Peter Jackson 07985 002325
beacon@painswick.net

Editing Associates

John Barrus 812942
beacon@painswick.net

Alastair Jollans 814263
beacon@painswick.net

Next Month's Editor

John Barrus 812942
beacon@painswick.net

Diary and Personal Column

Vicky Aspinall 07557 524016
cvasp.26@gmail.com

Feature writer and Directory

Carol Maxwell 813387
features.beacon@painswick.net
directory.beacon@painswick.net

Sport

John Barrus 812942
barrusjp@yahoo.co.uk

Distribution

Celia Lougher 812624
distribution.beacon@painswick.net

Treasurer

Richard Aspinall 07884 214146
treasurer.beacon@painswick.net

Advertising

Peter Rowe 813228
advertising.beacon@painswick.net

Subscriptions

Jacek Wolowiec 813295
subscriptions.beacon@painswick.net

Landcare Services

Environmentally Sensitive

Tree Surgery

All Types of Tree Work Undertaken
Contact Zeb or Clare on



Phone 01452 812709
or 07969 918121

Clareoverhill@phonecoop.coop

WWW.Treesandlandcare.co.uk

Mindfulness Based Stress Reduction courses

8-week small group or individual courses

Turnstone House Greenhouse Lane

Simon Robey MBACc, MRCHM
for more information contact
turnstone2021@gmail.com

07799 742498

www.painswickacupuncture.com

Additional copies of the Beacon

are available from the Premier shop or online, where the Beacon can be seen in full colour at
www.painswickbeacon.org.uk

Printed in Gloucester
for
The Painswick Beacon
by
www.inkylittlefingers.co.uk
01452 751900



More scenes from a rainy Painswick Feast



More happy winners from the dog show

